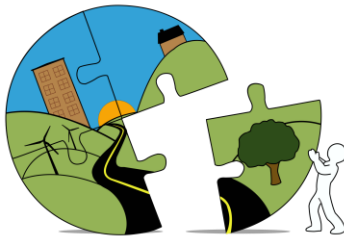


RIVERSIDE COUNTY
PLANNING DEPARTMENT

County of Riverside

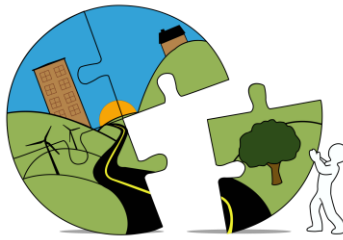
Paleontology Consultant List (August 2024)

FIRM NAME	ADDRESS	PHONE/EMAIL/WEBSITE	PROFESSIONAL CONTACT
AECOM	401 West A Street #1200, San Diego, CA 92101	(619) 610-7600 (619) 610-7601 (fax)(619) 710-7817 (paleontologist)	Joe Stewart, Ph.D.
Applied Earthworks, Inc.	133 N. San Gabriel Blvd., Suite 201 Pasadena, CA 91107	(626) 578-0119 x400 aollendorf@appliedearthworks.com (626) 578-0119 x402 mmacias@appliedearthworks.com	Amy Ollendorf, Ph.D, MS., RPA Melissa Macias, M.S.
Archaeological Associates	P.O. Box 180 Sun City, CA 92586	(951) 244-1783 Fax (951) 244-0084 aa@inland.net	Richard Guttenberg, M.A.
ArchaeoPaleo Resource Management, Inc.	1531 Pontius Ave., Suite 200 Los Angeles CA 90025	(310) 823-2850 Fax (310) 823-2851 aprmi@archaeopaleo.com	Robin Turner
Brian F. Smith & Associates	P.O. Box 892997 Temecula, CA 92689 14010 Poway Rd., Suite A Poway, CA 92064	(951) 681-9950 Fax (858) 679-9896 info@bfsa-ca.com www.bfsa-ca.comsmoreno@bfsa-ca.com	Todd Wirths.
C.A.R.E.	8701 Laval Place West Hills, California 91304	(818) 340-6676 Fax & Phone robanne@ix.netcom.com	Dianne F. Bonner, M.S.
Cogstone Resource Management Inc	1518 W. Taft Ave. Orange, CA 92865-4157	(714) 974-8300 Fax (714) 974-8303 admin@cogstone.com	Kim Scott, M.S. Eric Scott, M.A.



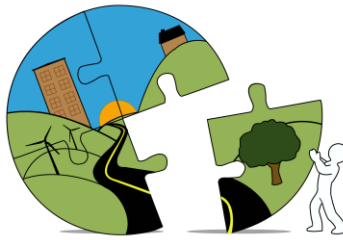
RIVERSIDE COUNTY
PLANNING DEPARTMENT

CRM Tech	1016 E. Cooley Drive, Suite B Colton, CA 92324	(909) 824-6400 (909) 376-7843 www.crmtech.us mhogan@crmtech.us	Michael Hogan
Dudek	605 Third Street Encinitas, CA 9202	(760) 479-4165 Fax (760) 632-0164 siren@dudek.com	Sarah Siren, M.S. GISP Michael Williams, Ph.D
Duke CRM	18 Technology Dr #103 Irvine, CA 92618	(949) 356- 6660 949-303-0420 curt@dukecrm.com	Curt Duke
ECORP Consulting Inc	215 North 5 th Street Redlands, CA 92374	(909) 307-0046 Fax (909) 307-0056	Joe Stewart, Ph.D.
Environmental Science Associates	626 Wilshire Blvd. Suite 1100 Los Angeles, CA 90017	213-559-4300 rthomas@esassoc.com	Ruta Thomas
EPG / Terracon	750 Pilot Rd, Suite F Las Vegas, NV 89119-9007	(702) 597-9393 mpasenko@epgllc.com	Michael Pasenko
First Carbon Solutions	220 Commerce Suite 200 Irvine, CA 92602	(714) 508-4100 Fax (714) 508-411 klord@brandman.com	Kenneth J. Lord, Ph.D. Tula Economou, M.S., PG Joe Stewart
Ganey Science	P.O Box 269 Tivoli, New York 12583	+1 (845) 444-0170 dganey@ganeydp.com	Douglas Ganey, Principal Scientist
HANA Resources, Inc.	20361 Hermana Circle Lake forest, CA 92630	949-648-4988 sloanes@hanaresources.com	Sloane Seferyn Dale Schneeberger, PG



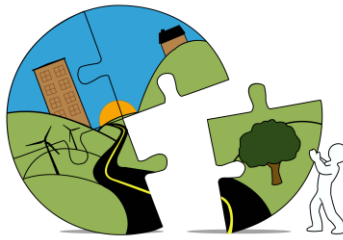
RIVERSIDE COUNTY
PLANNING DEPARTMENT

John Minch & Associates	26623 Sierra Vista Mission Viejo, CA 92692	(949) 367-1000 Fax (949) 367-0117 jminch@jma-ca.com rguttenberg@jma-ca.com	Richard Guttenberg, M.A.
L & L Environmental, Inc.	700 East Redlands Blvd, #U351 Redlands, CA 92373	(909) 335-9897 (951) 201-5742 lirish@lleviroinc.com	Leslie Irish
LSA Associates, Inc.	1500 Iowa Avenue Street, Suite 200 Riverside, CA 92507	(760) 237-0625 Jodi.Ross-Borrego@lsa.net	Jodi Ross-Borrego
Material Culture Consulting	342 Cucamonga Ave. Claremont, CA 91711	(626) 205-8279 Fax: (626) 249-0479 tria@materialcultureconsulting.com	Jennifer Kelly, M.S.
Paleo Environmental Associates, Inc.	2248 Winrock Avenue Altadena, CA 91001-320	(626) 797-9895 Phone & Fax paleo@earthlink.net	Bruce Lander, Ph.D.
Paleo Solutions Inc.	1906 Orange Tree Ln, Suite 210 Redlands, CA 92374	(562) 818-7713 www.paleosolutions.com info@paleosolutions.com	Geraldine Aron
PaleoWest LLC.	517 S. Ivy Avenue Monrovia, CA 91016	(626) 408-8006 jdebusk@paleowest.com	Jessica DeBusk
PCR Services Corporation	1 Venture, Suite 150 Irvine, CA 92618	Office: 949-753-7001 Fax: 949-753-7002 k.garcia@pcrnet.com	Kyle Garcia
Psomas	1500 Iowa Avenue, Suite 210 Riverside, CA 92507 & 225 South Lake Ave. Suite 1000 Pasadena, CA 91101	(951) 787-8421 charles.cisneros@psomas.com	Charles Cisneros



RIVERSIDE COUNTY
PLANNING DEPARTMENT

Red Tail Environmental	1529 Simpson Way Escondido, CA 92029	760-294-3100 Info@redtailenvironmental.com	Shelby Castells, M.A., RPA
Rincon Consultants, Inc	1980 Orange Tree Ln, Suite 105 Redlands, CA 92374	909-253-0705 cduran@rinconconsultants.com www.rinconconsultants.com	Christopher Duran, M.A., RPA
San Diego Natural History Museum	1788 El Prado Balboa Park San Diego, CA 92101 P. O. Box 121390 San Diego, CA 92112-1390	(619) 255-0232 (619) 255-0264 tdemere@sdnhm.org kmccomas@sdnhm.org	Thomas A. Demere, Ph.D. Katie M. McComas, M.S.
Scientific Resource Surveys, Inc.	2324 North Batavia St., Suite 109 Orange, CA	Office: (714) 685-0204 Fax: (714) 685-0082	Joe Stewart
South Environmental	2061 N. Los Robles Ave, #205 Pasadena, CA 91104	(626) 314-2961 jstrauss@southernenvironmental.com	Justin Strauss, M.S.
Spindrift Archaeological Consulting, LLC.	8895 Towne Centre Drive #105-248 San Diego, CA 92122 11422 Red Cloud Peak Littleton, CO 801	(858) 333-7202 arleen@spindriftarchaeology.com (720) 907-1640	N. Scott Rugh, M.S.
Stantec	19 Technology Drive Irvine, CA 92618 22690 Cactus Avenue Suite 300 Moreno Valley, CA 92553	(949) 923-6151 Fax (949) 923-6114 www.stantec.com gavin.archer@stantec.com	Lawrence Barnes, Ph.D. Hugh Wagner, Ph.D.



RIVERSIDE COUNTY
PLANNING DEPARTMENT

	73-733 Fred Waring Drive Suite 100 Palm Desert, CA 92260		
Statistical Research, Inc.	21 W Stuart Ave. Redlands, CA 92374	(909) 335-1896 jeladli@srcrm.com	Joeseeph J. El Adli, Ph.D.
SWCA Environmental Consultants	51 W Dayton St Pasadena, CA 91105	(626) 240-0587 Matthew.Carson@swca.com	Matthew Carson
Tetra Tech, Inc	348 Hospitality Lane Ste 100 San Bernadino, CA 92408	(909) 381-1674 www.Tetrattech.com fred.budinger@tetrattech.com	Fred Budinger, Ph.D.
VCS Environmental	30900 Rancho Viejo Rd. Suite 100 San Juan Capistrano, CA 92675	949-234-6070 949-289-3624 949-489-2700 jbeeman@vcsevenvironmental.com bkussman@vcsevenvironmental.com	Julie Beeman, President Brian Kussman
Wagner, Hugh M.	P.O. Box 1039 Lemon Grove	(619) 955-5749 Cell (619) 806-0091 hughwqnr@aol.com	Hugh M. Wagner, Ph.D.
Wood E&I	1845 Chicago Avenue Suite D Riverside, CA 92507	(951) 369-8060 www.woodplc.com	Matthew Sauter, M.S.