

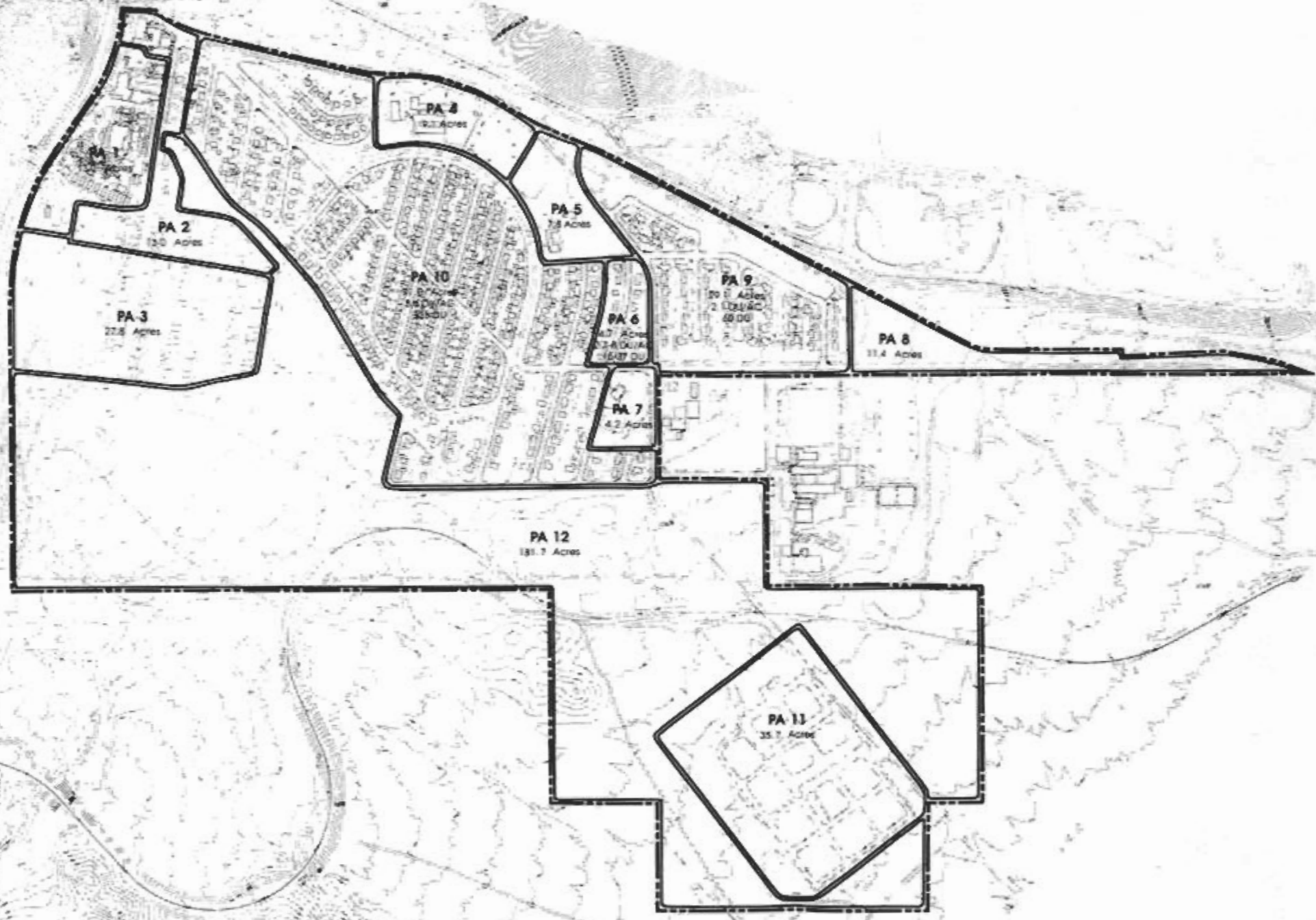
SP 306



Land Use Plan

Planning Areas

- Planning Area 1: Commercial/Manufacturing**
13.0 Acres
 - Planning Area 2: Commercial/Manufacturing**
13.0 Acres
 - Planning Area 3: Outdoor Storage**
27.8 Acres
 - Planning Area 4: Commercial/Manufacturing**
9.1 Acres
 - Planning Area 5: Commercial/Manufacturing**
7.8 Acres
 - Planning Area 6: Residential**
4.7 Acres
2.1-8 DU/AC
Total Units: 15-37 DU
 - Planning Area 7: Recreation**
4.2 Acres
 - Planning Area 8: Commercial**
11.4 Acres
 - Planning Area 9: Residential**
29.1 Acres
2.1 DU/AC
Total Units: 60 DU
 - Planning Area 10: Residential**
91.0 Acres
3.6 DU/AC
Total Units: 335 DU
 - Planning Area 11: Wastewater Treatment**
35.7 Acres
 - Planning Area 12: Open Space/Recreation**
181.7 Acres
- Total Specific Plan Area**
± 428.5 Acres



FEET

Figure 1