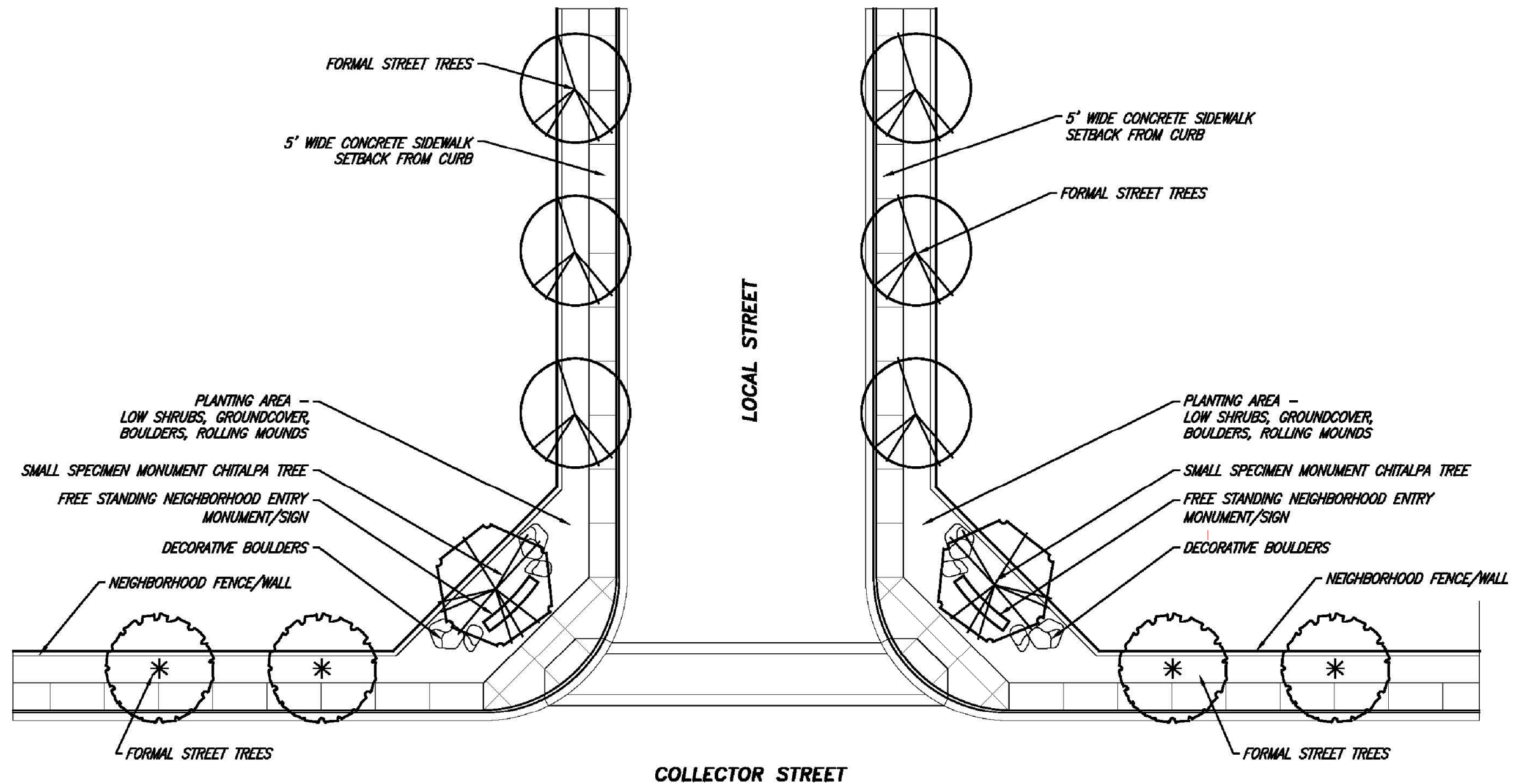


G:\201111-0092\GIS\SPA_Neigh_Monument_17x11.mxd



G:\201111-0092\GIS\SPA_Neigh_Monument_Plan_17x11.mxd



* SEE SECTION C.5-LANDSCAPE REQUIREMENTS (PAGES IV.C.44 THROUGH IV.C.53) FOR SPECIFIC REQUIREMENTS ON PLANTING MATERIALS

4) Commercial/Retail Entry Monumentation

Commercial Entry Monumentation (see **Figure C-3-4a – Commercial Entry Monumentation, Figure C-3-4b – Commercial Entry Monumentation Plan and Figure C-3-4c – Commercial Monument Sign**) shall be placed at entries to the centers on the north and south sides of Domenigoni Parkway (see **Figure A-8-1 – Landscape Plan**).

These entries are designed to highlight the service and shopping areas and to provide the shopper with a limited source of information via signage within the monumentation. The design allows for flexibility and can be interpreted based on the individual developer's needs. Design criteria are described, beginning at a point furthest from the intersection curb:

- a) Forty-foot radius curving landscaped area;
- b) Freestanding Entry monument sign, with vertical height and overall surface area not to exceed County of Riverside standards for commercial signage;
- c) Line of small, flowering accent trees offset to either side to allow visibility of the sign;
- d) Accent shrub and groundcover from sidewalk back to parking area; and
- e) Twelve-foot enhanced pedestrian/bike parkway; adjacent to the curb at the intersection and remaining adjacent to the curb at all sections which front the retail zoning.

