

PLANNING UNIT 10

Approved Planning Unit 10

Land UseR-4 Patio Homes
Acreage.5.9 Acres
Density.5.7 Units per Acre
No. of Units . . .34 Units

Proposed Planning Area 6

Land UseR-4 Single Family
Acreage.10.0 Acres
Density.3.4 Units per Acre
No. of Units . . .34 Units

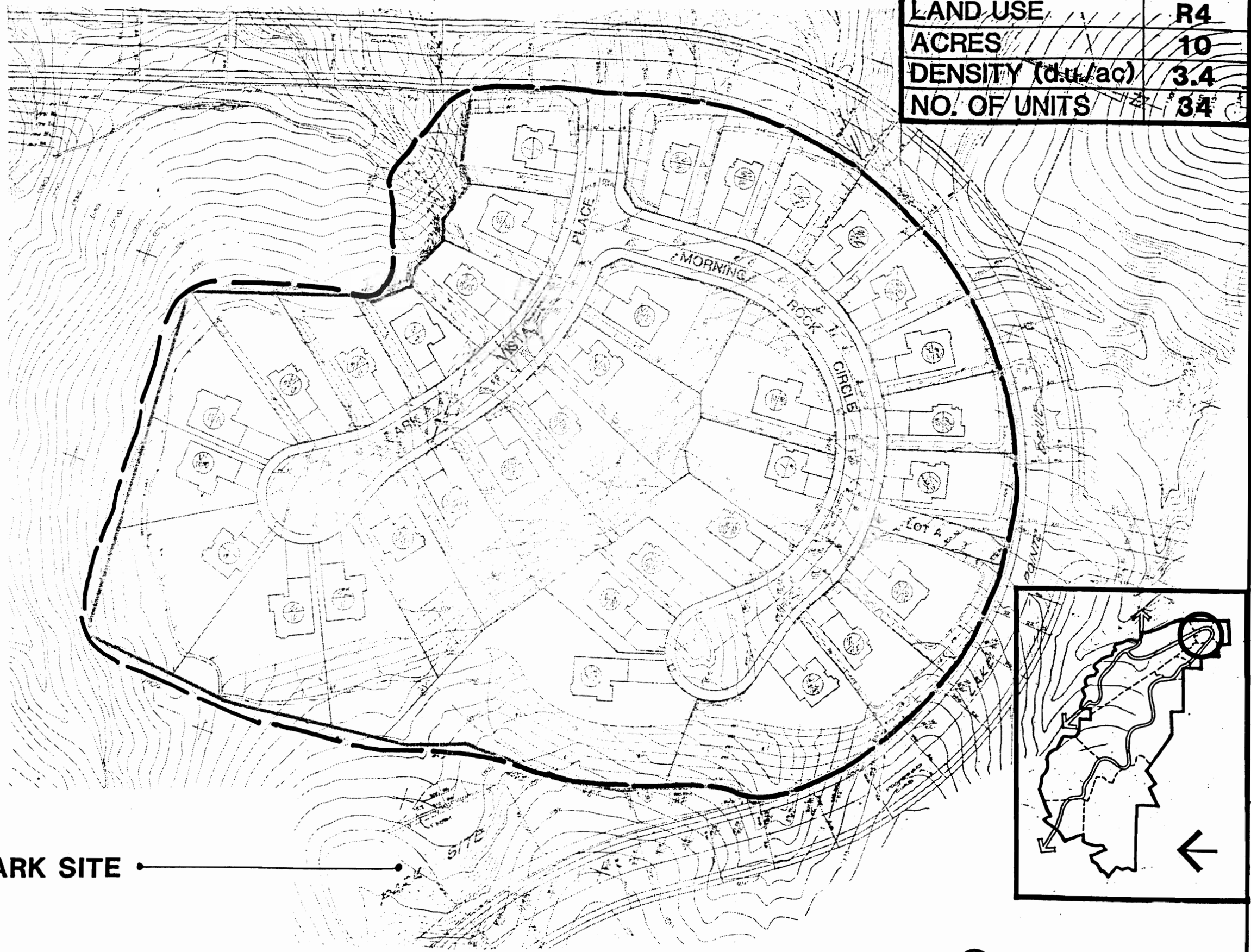
Summary:

Although the land use and number of dwellings remain the same, the size of the Planning Area is increased in order to accomodate wider, stepped lots and graded slopes between rows of homes which allow the edges of the Planning Area to daylight at the natural open space.

Planning Area 6 has been approved by the County as Vesting Tentative Tract #23158.

Additional design and landscape standards can be found in the Appendix.

PLANNING AREA 6	
LAND USE	R4
ACRES	10
DENSITY (du./ac)	3.4
NO. OF UNITS	34



PARK SITE ———

