

PLANNING UNIT 7

Approved Planning Unit 7

Land UseR-4 Patio Homes
Acreage.5.0 Acres
Density.5 Units per Acre
No. of Units . . .25 Units

Proposed Planning Area 4

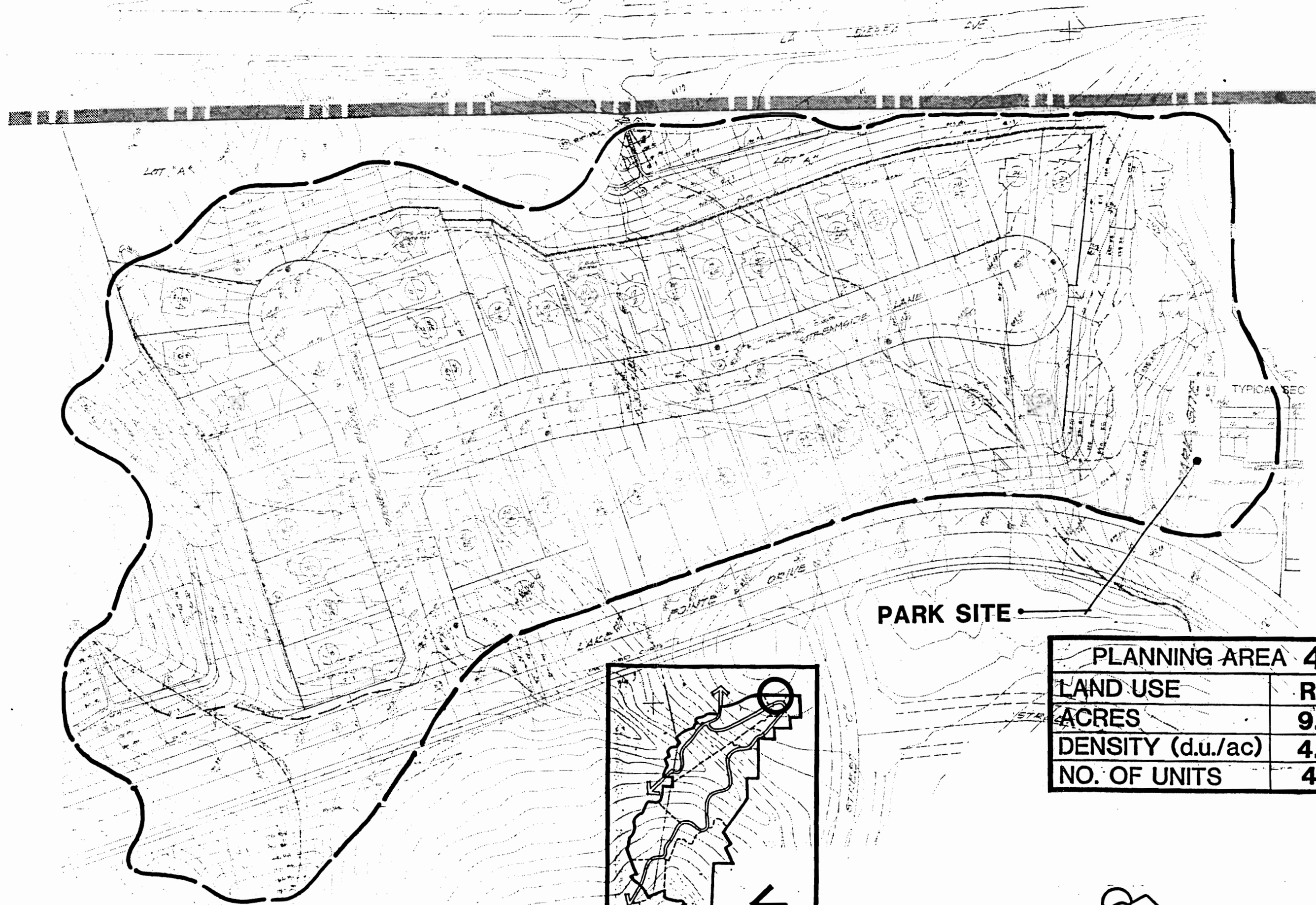
Land UseR-4 Patio Homes
Acreage.9.8 Acres
Density.4.3 Units per Acre
No. of Units . . .42 Units

Summary:

An increase in the number of units from 25 to 42. The 17 additional units are transferred from Planning Unit 2. An increase of 4.8 acres in the Planning Area acreage. The additional acreage is reflected in a portion of the primary collector street not included in Planning Unit 7, a portion of Park #4, and an open space lot "A" which includes slope areas and a trail to the adjoining park, also not included in Planning Unit 7.

The new Planning Area 4 has been approved by the County as Vesting Tentative Tract #23157.

Additional design and landscape standards can be found in the attached Appendix.



PLANNING AREA 4	
LAND USE	R4
ACRES	9.8
DENSITY (d.u./ac)	4.3
NO. OF UNITS	42

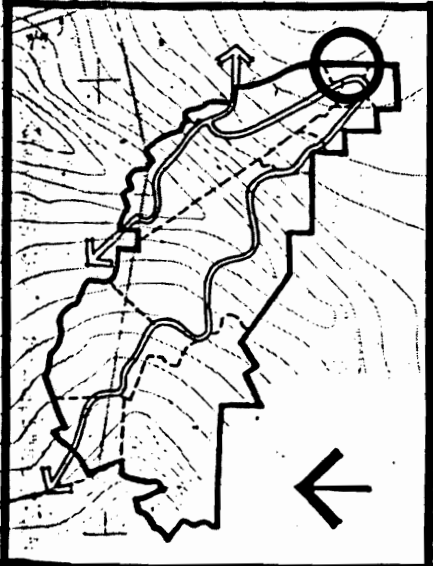


FIGURE 6