



Agenda Item No. 4.1

Riverside County Planning Commission

Public Hearing: General Plan
Amendment No. 960 and
Climate Action Plan



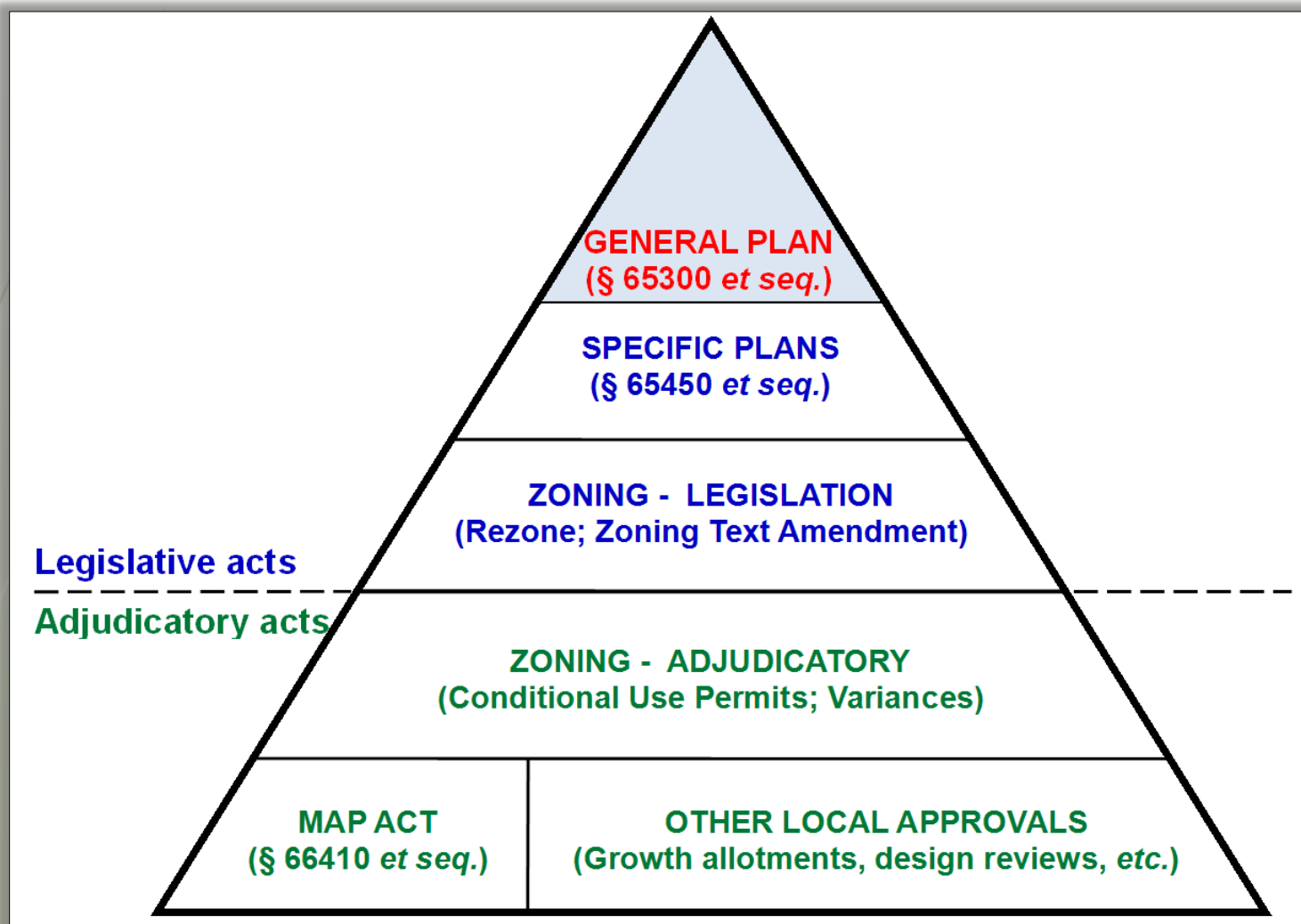
General Plan = Blueprint for Tomorrow

- A **“Blueprint”** for the long-range development of the County
- GPA No. 960 is the County’s Proposed Major, 8-Year Update to its General Plan
- First major update since 2003





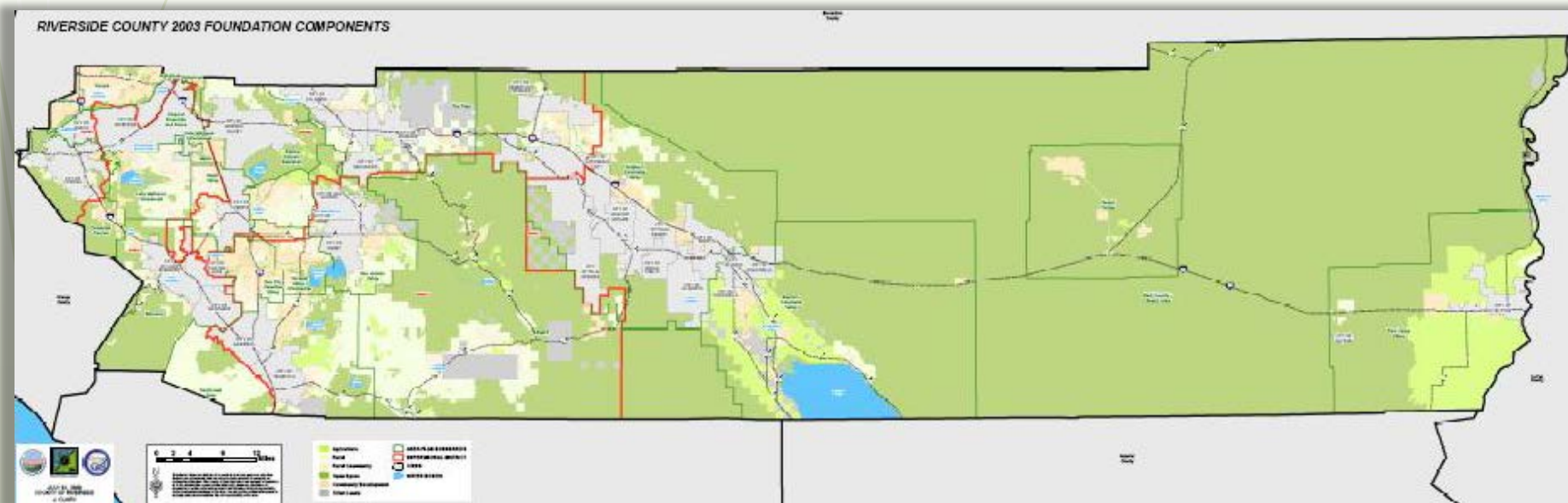
Relationship of General Plan to Other Land Use Actions





Riverside County General Plan

- Administration Element includes a *Certainty System* and requires an 8-year update to balance:
 - Certainty of land uses
 - Flexibility in their implementation





Major Milestones

- **July 9, 2008:**
Planning Commission Workshop
- **October 1, 2008:** PC Workshop
- **October 21, 2008:**
GPA No. 960 initiated by Board of Supervisors
- **October 2008 – December 2010:** Prepared key components of GPA No. 960
- **October 2008 – October 2009:**
Core GPAC Meetings
- **April 13, 2009:**
NOP circulated, DEIR baseline established
- **June 24, 2009:**
Planning Commission Workshop
- **April 27 and May 4, 2009:**
DEIR No. 521 Scoping Meetings
- **May 2009 – March 2014:**
DEIR Preparation
- **August 19, 2009:** PC Workshop
- **November 18, 2009:** PC Workshop
- **June 2013 – August 2013:**
Final GPAC meetings
- **February 26, 2014:** PC Workshop
- **May 1, 2014:** DEIR No. 521 released
- **February 21, 2015:**
Recirculated DEIR No. 521 released
- **June 17, 2015:** PC Workshop
- **July 2-30, 2015:** Public Outreach
- **August 19 and 26, 2015:**
PC Public Hearings
- **As early as November 24, 2015:**
BOS Public Hearing



Outreach

Public Hearings/Workshops/Updates

- Board of Supervisors: 1
- Planning Commission: 7



General Plan Advisory Committee Meetings

- 13

California Environmental Quality Act Notices

- 2 CEQA Scoping Meetings
- Notice of DEIR Preparation
- Notice of DEIR Availability
- Notice of Availability of Recirculated DEIR
- Notice of Intent
- Newspaper Notices: 12



Outreach (cont.)

GPA No. 960 Web Page

- <http://planning.rctlma.org/>

Tribal Consultation (SB 18)

- Written communication and meetings
- Consultation with 5 Tribal Governments

Planning GPA No. 960 Hotlines

- 951-955-6892 or 951-955-6573

Six Public Outreach Meetings

- Held throughout the County during July 2015





Outreach (cont.)



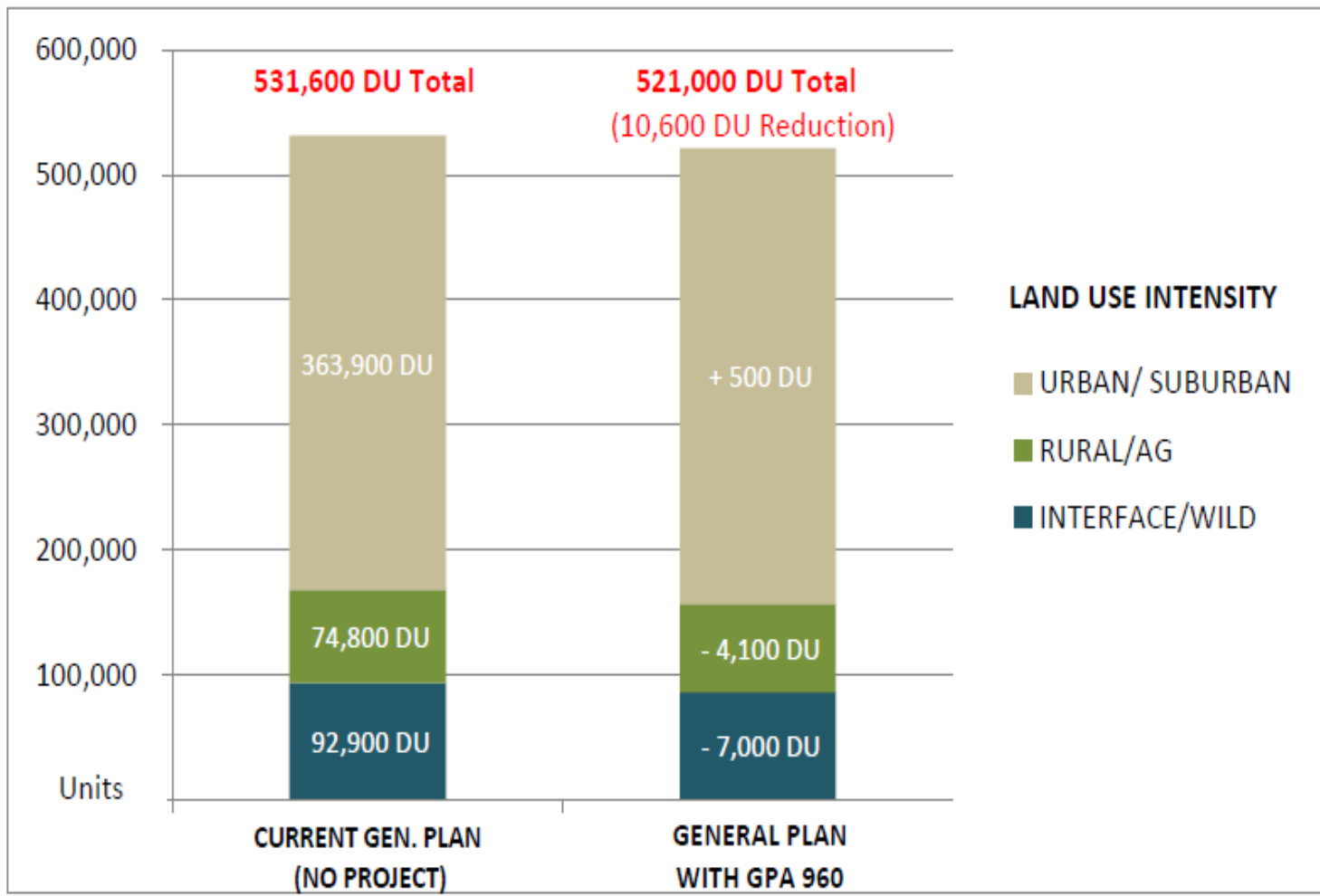
August 19, 2015 Public Hearing

- PC Agenda posted 12 days before meeting
- NOI, Final Draft EIR and errata posted on-line August 5th
 - Paper docs. (14 vol.) at Riverside and Desert offices
- NOI and DVD with, Final Draft EIR and Errata sent to 21 County libraries
- NOP and EIR commenters received a NOI and DVD
- NOI:
 - 3 newspapers
 - 600+ individuals
 - E-mail blast to 100+ individuals





Housing Buildout Projections No Project vs. GPA No. 960*



*Data Source: Draft EIR No. 521, Table 5.5-E (Cumulative Socioeconomic Effects), March 2014



GPA No. 960 Proposed Changes

- Vision Statement
- Land Use Element
- Circulation Element
- Safety Element
- Noise Element
- Multi-Purpose Open Space Element

- Air Quality Element
- Administrative Element





GPA No. 960 Proposed Changes

Updates to all 19 Area Plans

- Maps
- Table 2: Statistical Summaries (demographic/land use)
- Update airport influence areas
- Updates to policies, policy areas, overlays and specific plan information
- Refine references to CETAP and MSHCP





Parcel-Specific Land Use Changes Proposed By GPA No. 960

► Conserved Land Mapping Changes

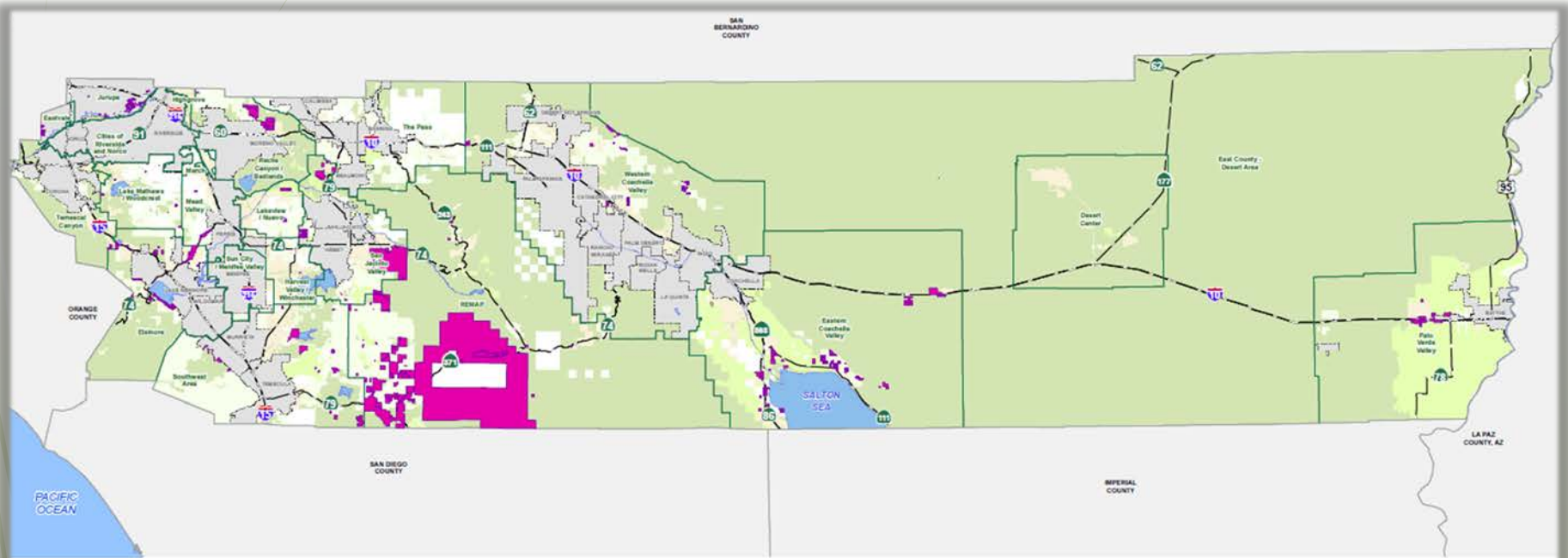
- **14,800** acres to Open Space-Conservation Habitat (OS-CH)

► Criteria-Based Parcel Specific Land Use Changes

- **6,735** acres
- Examples: Technical changes, lands incorrectly identified as public facilities, designations inappropriate for lot size, inaccurate OS-CH designations, etc.



Parcel-Specific Land Use Changes Proposed By GPA No. 960

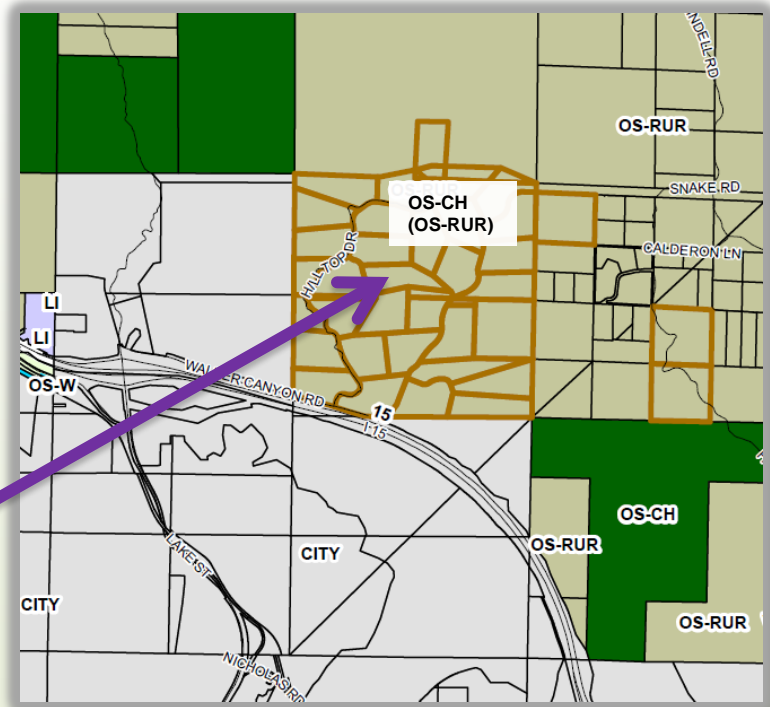
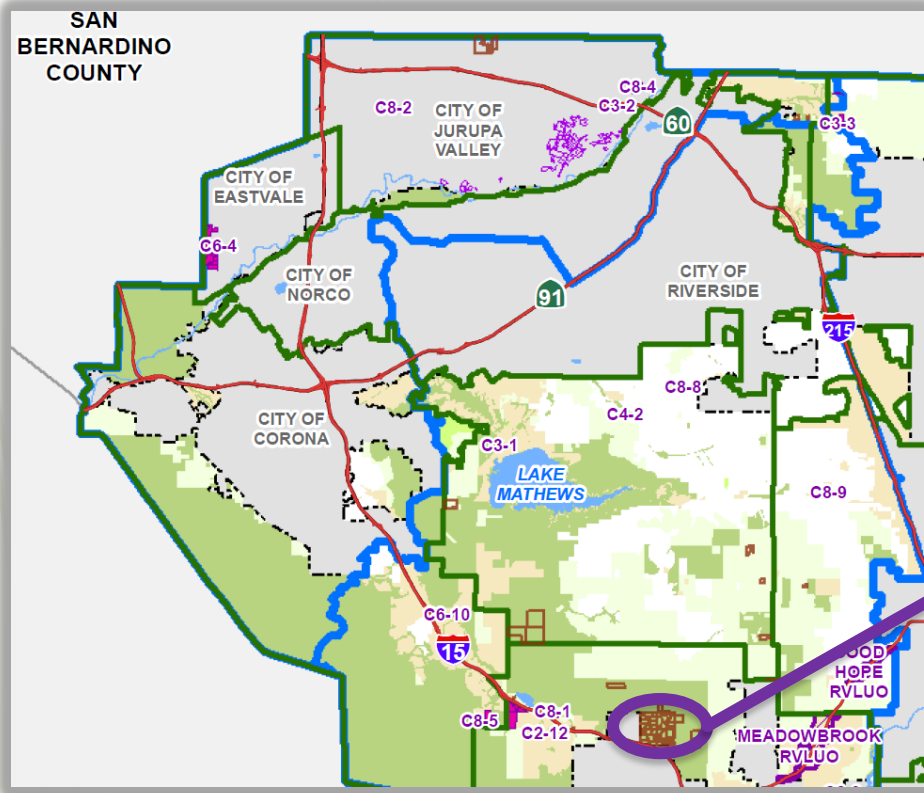


Data Source: Riverside County Planning Department

- GPA960 Project Areas
- Agriculture
- Rural
- Rural Community
- Open Space
- Community Development
- HIGHWAYS
- Area Plan Boundary
- City Boundary
- Waterbodies

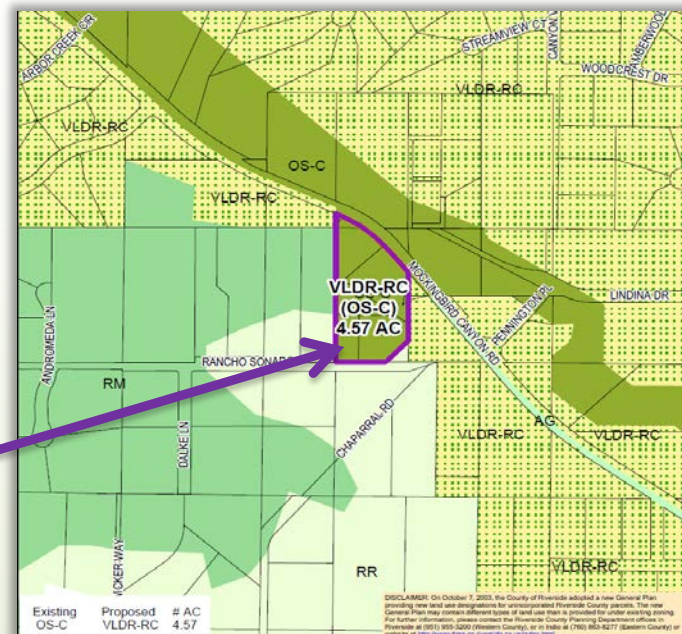
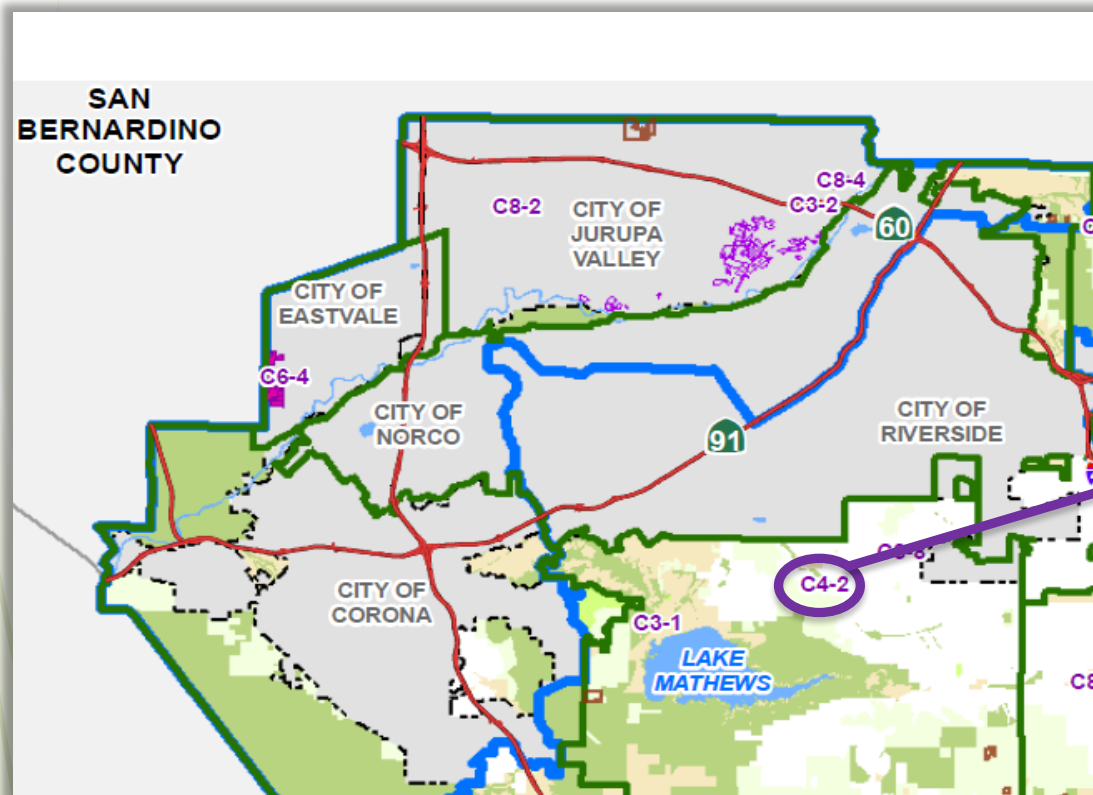


Lake Mathews-Woodcrest Area Plan Proposed Update Example





Lake Mathews-Woodcrest Area Plan Proposed Update Example





County of Riverside Climate Action Plan (CAP)

► Why?

- AB32 – CA Global Warming Solutions Act
- Preserve local land use control over how greenhouse gas reductions are accomplished
- Streamline the environmental review process

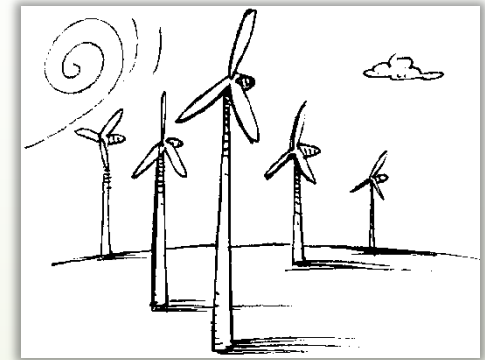




County of Riverside Climate Action Plan (CAP)

Who?

- County and cities prepare Climate Action Plans
- CAP generally regulates:
 - government operations
 - new development – screening table or existing modeling
 - commercial/industrial operations





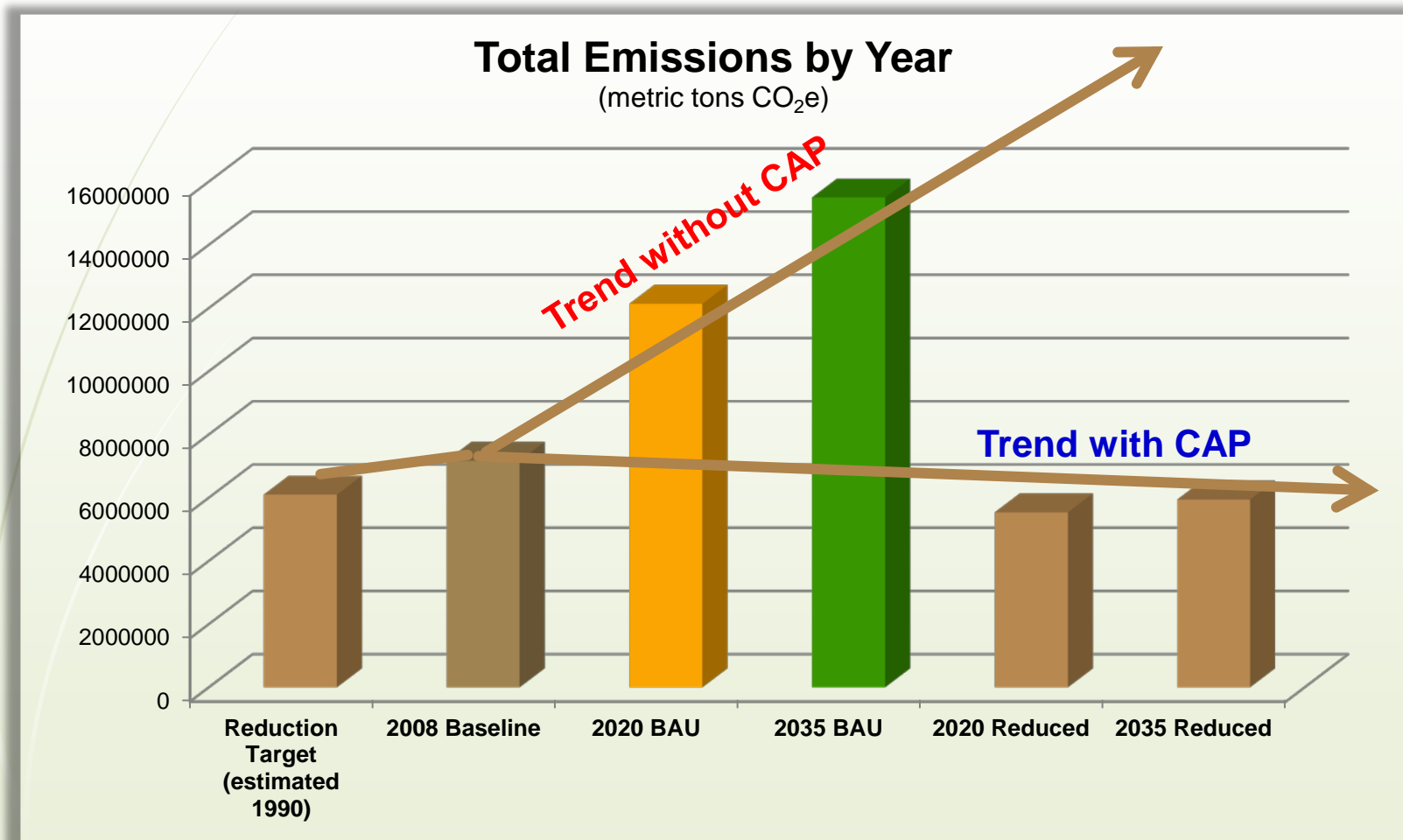
Formula for Creating a CAP

- Develop baseline inventory of emissions
- Model future projections
- Establish reduction target (1990)
- Assess what we are doing now and estimate reductions needed
- Create implementation measures and links to General Plan goals and policies
- Incorporate a monitoring program





GHG Emissions Inventories and Trends



BAU = Business as Usual



CEQA Review: GPA No. 960 and Climate Action Plan

➤ DEIR No. 521 Released May 1, 2014

- 60-day public review
- 78 comment letters received

➤ Recirculated DEIR No. 521 released February 21, 2015

- 45-day public review
- 115 comment letters received

➤ Draft Final EIR No. 521 available on August 5, 2015





GPA No. 960 Post Production Change Requests

- **December 2009, project *frozen* for purposes of GPA960 modeling and CEQA analyses**
- **LUD change requests submitted after December 2009**
- **Post production change requests**
 - Documented in staff report, Attachment C
 - Three categories:
 - A. Changes to a General Plan Foundation Component
 - B. Minor changes, no substantive new CEQA issues
 - C. Potentially substantive issues, may impact conclusions reached in EIR



Looking Forward

TASKS	DATES
PUBLIC HEARING: PLANNING COMMISSION	AUGUST 19, 2015: RIVERSIDE AUGUST 26, 2015: PALM DESERT*
PUBLIC HEARING: BOARD OF SUPERVISORS**	NOVEMBER 24, 2015

- * Date reserved for continuing the public hearing process; continuation of the Public Hearing is subject to the Planning Commission's discretion
- ** Date may be subject to change





Staff Recommendation:

ADOPTION of Planning Commission Resolution No. 2015-011

Make the following recommendation to the Board of Supervisors:

- **TENTATIVELY CERTIFY ENVIRONMENTAL IMPACT REPORT NO. 521**
- **TENTATIVELY APPROVE GENERAL PLAN AMENDMENT NO. 960**
- **APPROVE THE RIVERSIDE COUNTY CLIMATE ACTION PLAN**



THANK YOU



CETAP Corridors Errata Page C-24

In addition to the corridors and study areas depicted in Figure C-1, the RCTC completed a joint Major Investment Study (MIS) with the Orange County Transportation Authority (OCTA) for a Riverside County to Orange County corridor. This corridor has been identified as a mitigation measure for traffic impacts identified in the Draft EIR for this General Plan. The MIS identified a Locally Preferred Strategy (LPS) that was adopted by the RCTC and the OCTA. The Executive Summary of the Final Report for the MIS LPS listed the following components which are also depicted on Exhibit 7 of the MIS (Appendix O). An update is provided for each component as of mid-2015:



Continued Page C-24, Third Paragraph

- **“Establish Riverside Freeway (State Route 91) from the Costa Mesa Freeway (State Route 55) to Corona Freeway (Interstate 15) as a priority for improving transportation between Riverside and Orange counties. Emphasize Riverside Freeway (State Route 91) improvements between the Foothill/Eastern Transportation Corridor (State Route 241) and the Corona Freeway (Interstate 15) first, followed by improvements between Costa Mesa Freeway (State Route 55) and the Foothill/Eastern Transportation Corridor (State Route 241).” A series of projects have been completed or are under construction along this corridor.**
- **“Continue to work with the Foothill/Eastern Transportation Corridor Agency to develop a mutually acceptable plan to improve the connection between the Foothill/Eastern Transportation Corridor (State Route 241) and Riverside Freeway (State Route 91) corridors and accelerate capacity improvements on Eastern Toll Road (State Route 133) , Foothill/Eastern Transportation Corridor (State Route 241), and Eastern Toll Road (State Route 261) to optimize utilization of the toll roads to improve transportation between Riverside and Orange counties.” The Transportation Corridor Agencies are currently working to develop a plan to improve the connection between SR 241 and the SR 91 Express Lane.**



Continued Page C-24, Third Paragraph

- **“Continue to evaluate costs and impacts to Corridor A in the Riverside Freeway (State Route 91) right of way through a future preliminary engineering process in cooperation with other agencies.”**
- **“Continue to study the technical feasibility of the Corridor B concept, (Irvine/Corona Expressway, also known as Orange County CETAP connection) including cooperation with ... other interested agencies.”**
- **Corridors A & B both remain in the Regional Transportation Plan and Strategic Plan for consideration as long-term future projects.**
- **“Continue work with the Cal-Nevada Super Speed Train Commission on Anaheim to Ontario Maglev alignments in the Santa Ana Canyon or alternate corridors as appropriate.” As of 2015 this project appears to be on hold.**



Page C-26, After Policy 7.9

NEW C7.10

Support the analysis of the feasibility of developing Cajalco Expressway and Ethanac Expressway as Intra-County corridors to support the intent of the East-West Hemet to Corona/Lake Elsinore CETAP Corridor.



CIRCULATION ELEMENT

Draft General Plan Amendment No. 960 – Page C-7

The following minimum target levels of service have been designated for the review of development proposals in the unincorporated areas of Riverside County with respect to transportation impacts on roadways designated in the Riverside County Circulation Plan (Figure C-1) which are currently County maintained, or are intended to be accepted into the County maintained roadway system:

- LOS C shall apply to all development proposals in any area of the Riverside County not located within the boundaries of an Area Plan, as well as those areas located within the following Area Plans: REMAP, Eastern Coachella Valley, Desert Center, and Palo Verde Valley.
- LOS D shall apply to all development proposals located within any of the following Area Plans: Eastvale, Jurupa, Temescal Canyon, Lake Mathews/Woodcrest, Elsinore, Mead Valley, Highgrove, Reche Canyon/Badlands, Lakeview/Nuevo, Sun City/Menifee, Harvest Valley/Winchester, Southwest Area, The Pass, San Jacinto Valley, and Western Coachella Valley.



Continued CIRCULATION ELEMENT

Draft General Plan Amendment No. 960 – Page C-7

- **LOS E may be allowed by the Board of Supervisors within designated areas where transit-oriented development and walkable communities are proposed.**
- **Notwithstanding the forgoing minimum LOS targets, the Board of Supervisors may, on occasion by virtue of their discretionary powers, approve a project that fails to meet these LOS targets in order to balance congestion management considerations in relation to benefits, environmental impacts and costs, provided an Environmental Impact Report, or equivalent, has been completed to fully evaluate the impacts of such approval. Any such approval must incorporate all feasible mitigation measures, make specific findings to support the decision, and adopt a statement of overriding considerations. (AI 3)**



Section 4.18 Transportation and Circulation

#	Jurisdiction	Target LOS ¹
COUNTIES		
1	County of Imperial	C
2	County of Los Angeles	D
3	County of Orange	D
4	County of San Bernardino	C/D ²
5	County of San Diego	D
6	County of Kern	D
7	County of Sacramento	D/E ³
8	County of Santa Clara	D

#	Jurisdiction	Target LOS ¹
CITIES		
1	City of Banning	C/D ⁴
2	City of Beaumont	D
3	City of Blythe	--
4	City of Calimesa	C
5	City of Canyon Lakes	--
6	City of Cathedral City	E
7	City of Coachella	D
8	City of Corona	D
9	City of Desert Hot Springs	D
10	City of Eastvale	C/D ⁵
11	City of Hemet	D
12	City of Indian Wells	D
13	City of Indio	D
14	City of Jurupa Valley	--
15	City of La Quinta	D
16	City of Lake Elsinore	C/D/E ⁶
17	City of Menifee	D
18	City of Moreno Valley	C/D ⁵
19	City of Murrieta	C/D ⁷
20	City of Norco	--
21	City of Palm Desert	D
22	City of Palm Springs	D
23	City of Perris	E
24	City of Rancho Mirage	D
25	City of Riverside	D
26	City of San Jacinto	D
27	City of Temecula	D
28	City of Wildomar	C
29	City of Irvine	D/E ⁸
30	City of Ontario	E
31	City of Rancho Cucamonga	D

Footnotes:

- 1 – Source: Per General Plan of Jurisdiction
- 2 – LOS C allowed in desert region, LOS D in Western County
- 3 – LOS D allowed on rural roads. LOS E on urban roadways.
- 4 – LOS D proposed in General Plan Update
- 5 – LOS C; although LOS D allowed during peak hours
- 6 – LOS C, LOS D in urban, LOS E in certain areas
- 7 – LOS C for segments; LOS D for intersections
- 8 – LOS D, LOS E allowed in certain areas
- Not available or not identified

