

**Legend**

○ Neighborhoods	■ Cities
1 - Oasis Town Center	▨ Cities Spheres of Influence
2 - Thermal Town Center	▭ Area Plan Boundary
3 - North Shore Town Center	▭ County Boundaries
4 - Mecca Town Center	■ Water Bodies
16 - Thousand Palms Town Center	■ Tribal Lands
17 - Desert Edge/Southeast Desert Hot Springs Community	▨ Fire Hazard Severity Zones
20 - North Palm Springs Community	▨ Very High
	▨ High
	▨ Moderate

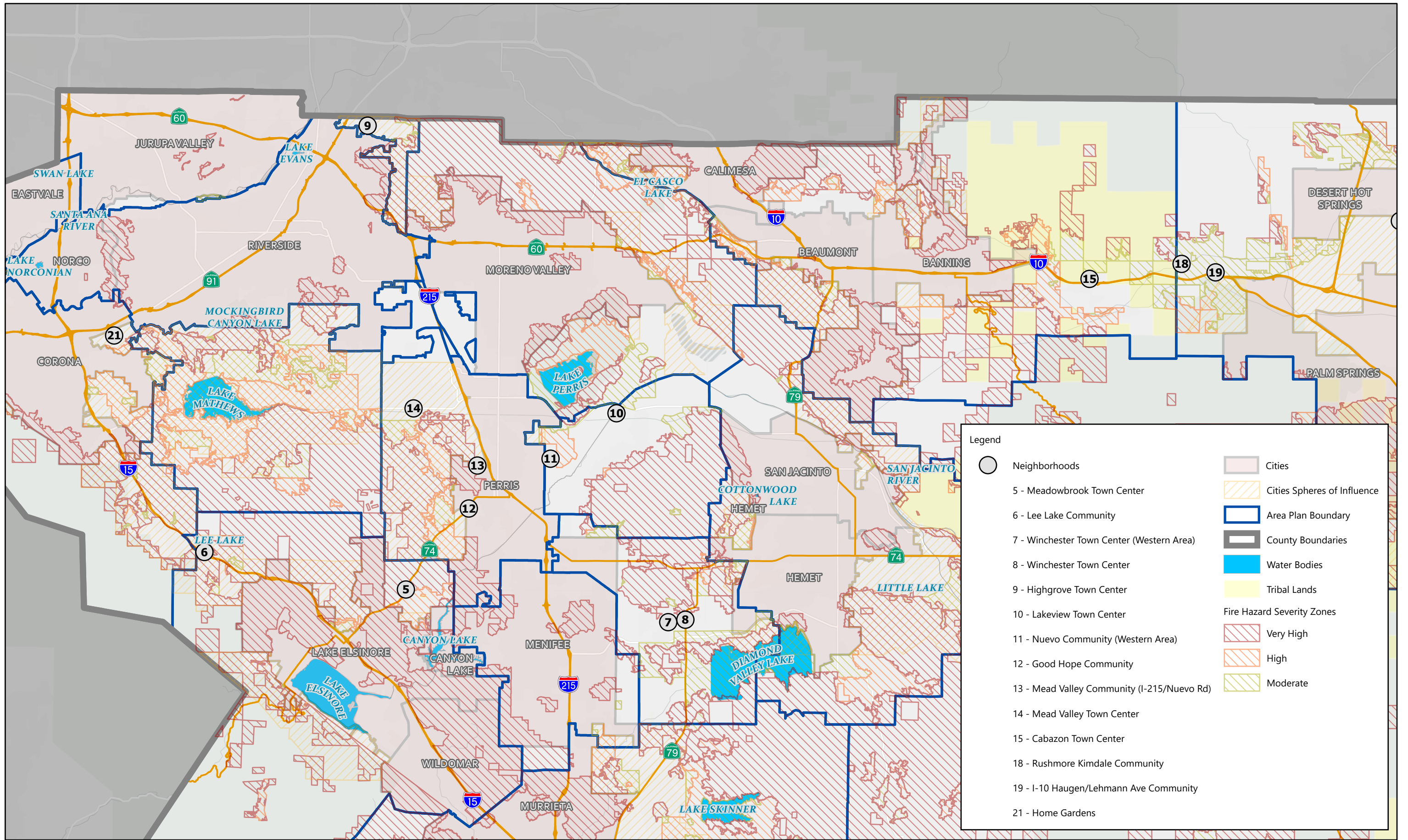


Michael Baker INTERNATIONAL



Source: ESRI, Riverside County

Figure P-15: Neighborhood Overview (East)



**Legend**

- Neighborhoods
- 5 - Meadowbrook Town Center
- 6 - Lee Lake Community
- 7 - Winchester Town Center (Western Area)
- 8 - Winchester Town Center
- 9 - Highgrove Town Center
- 10 - Lakeview Town Center
- 11 - Nuevo Community (Western Area)
- 12 - Good Hope Community
- 13 - Mead Valley Community (I-215/Nuevo Rd)
- 14 - Mead Valley Town Center
- 15 - Cabazon Town Center
- 18 - Rushmore Kimdale Community
- 19 - I-10 Haugen/Lehmann Ave Community
- 21 - Home Gardens

- Cities
- ▨ Cities Spheres of Influence
- ▭ Area Plan Boundary
- ▭ County Boundaries
- Water Bodies
- Tribal Lands

**Fire Hazard Severity Zones**

- ▨ Very High
- ▨ High
- ▨ Moderate



Michael Baker INTERNATIONAL

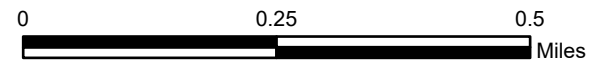


Source: ESRI, Riverside County

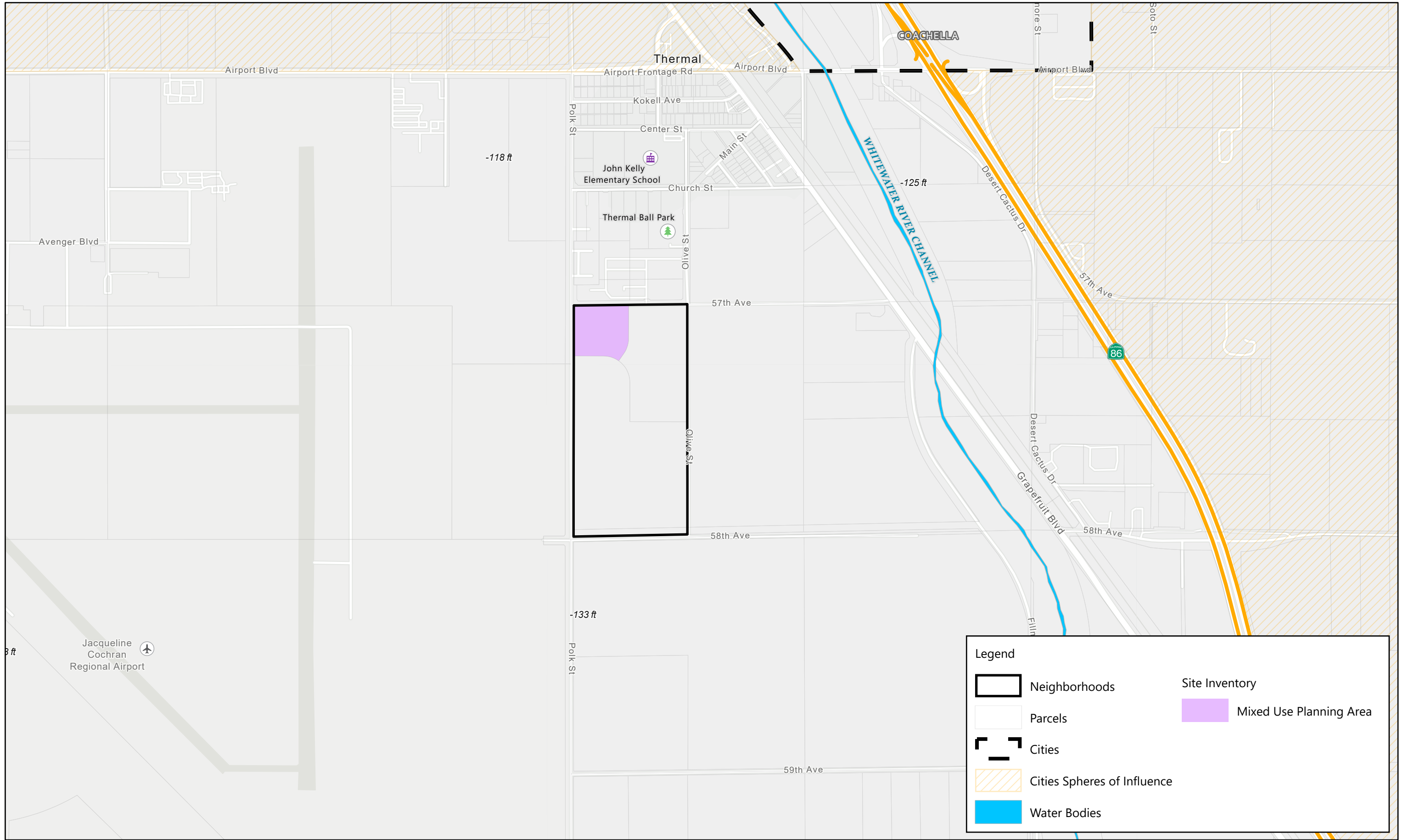
Figure P-16: Neighborhood Overview (West)

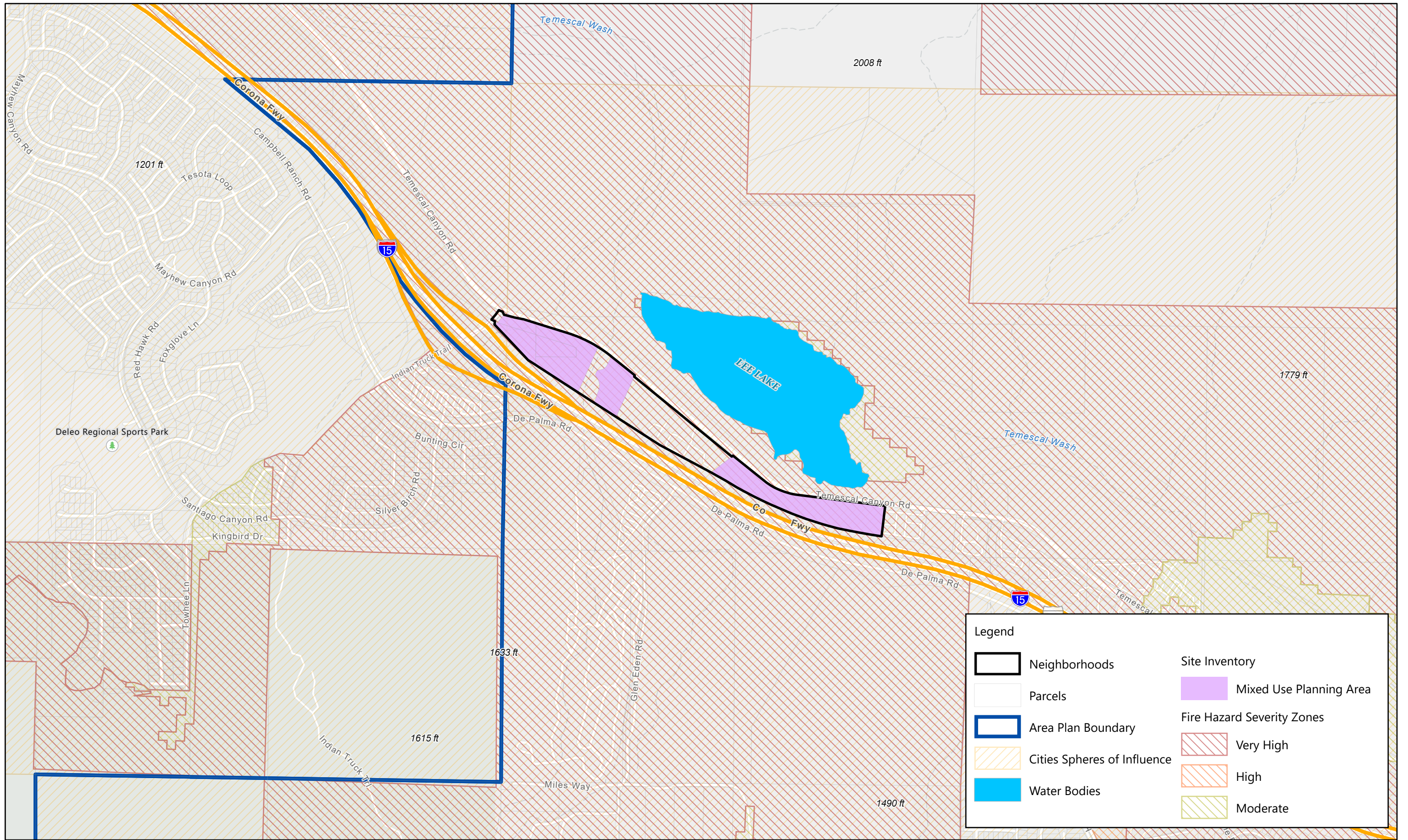


Michael Baker INTERNATIONAL

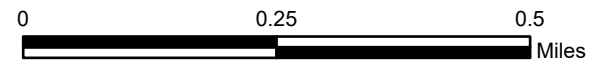


Source: ESRI, Riverside County

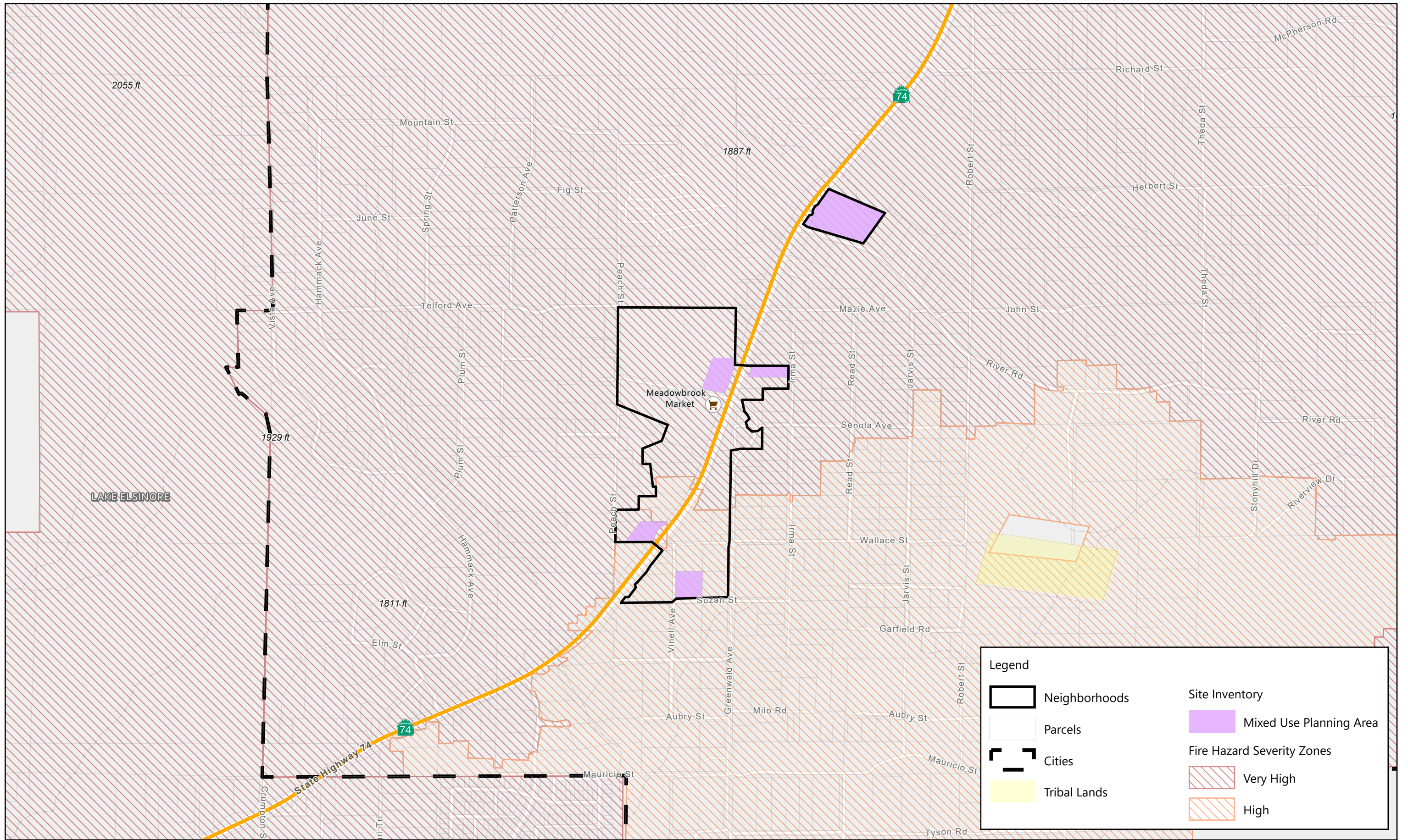




Michael Baker  
INTERNATIONAL

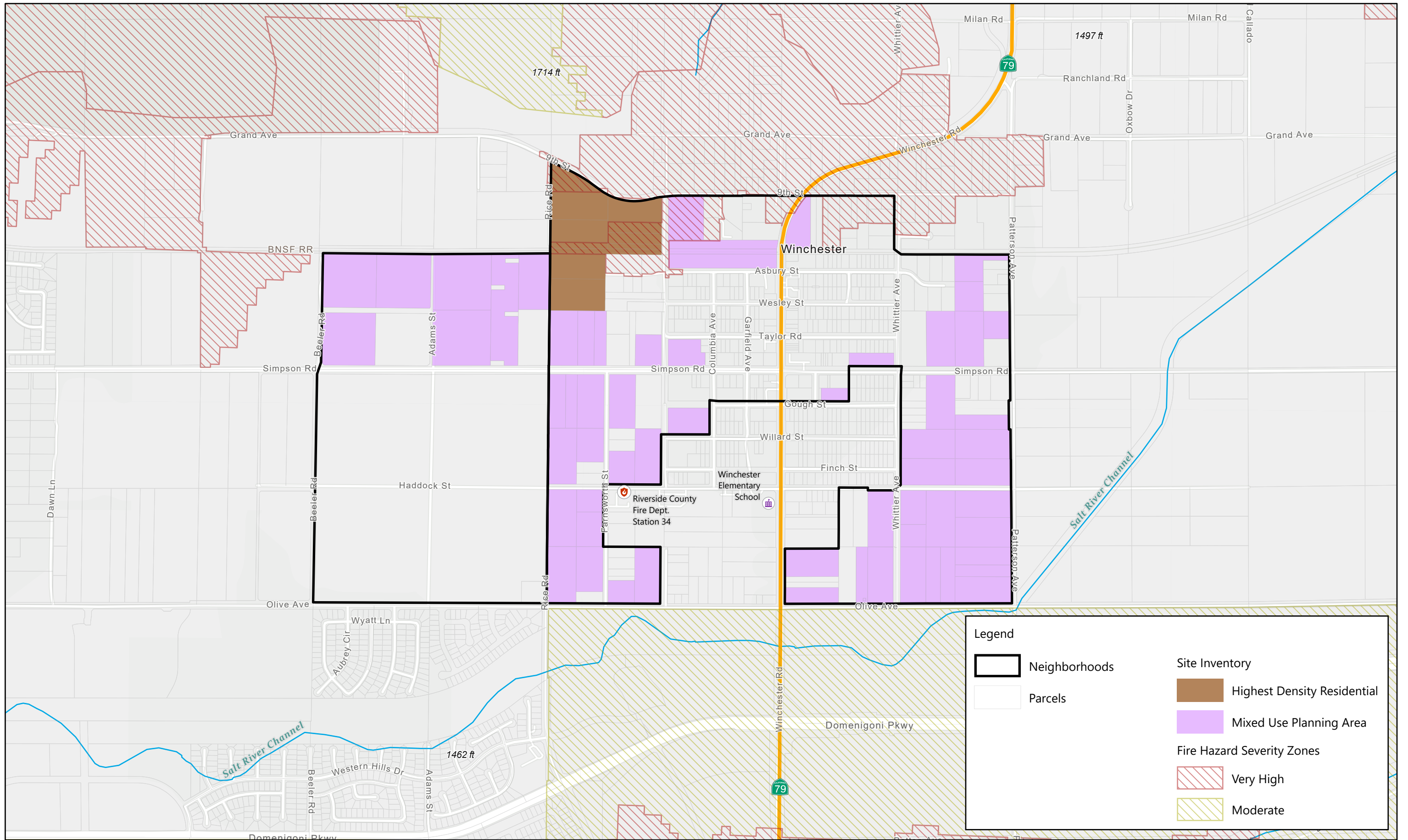


Source: ESRI, Riverside County



**Legend**

Neighborhoods	Site Inventory
Parcels	Mixed Use Planning Area
Cities	Fire Hazard Severity Zones
Tribal Lands	Very High
	High

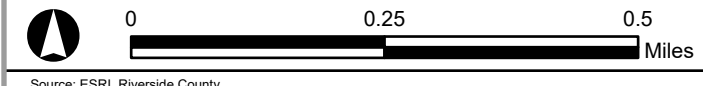


**Legend**

Neighborhoods	Site Inventory
Parcels	Mixed Use Planning Area
	<b>Fire Hazard Severity Zones</b>
	Very High
	Moderate

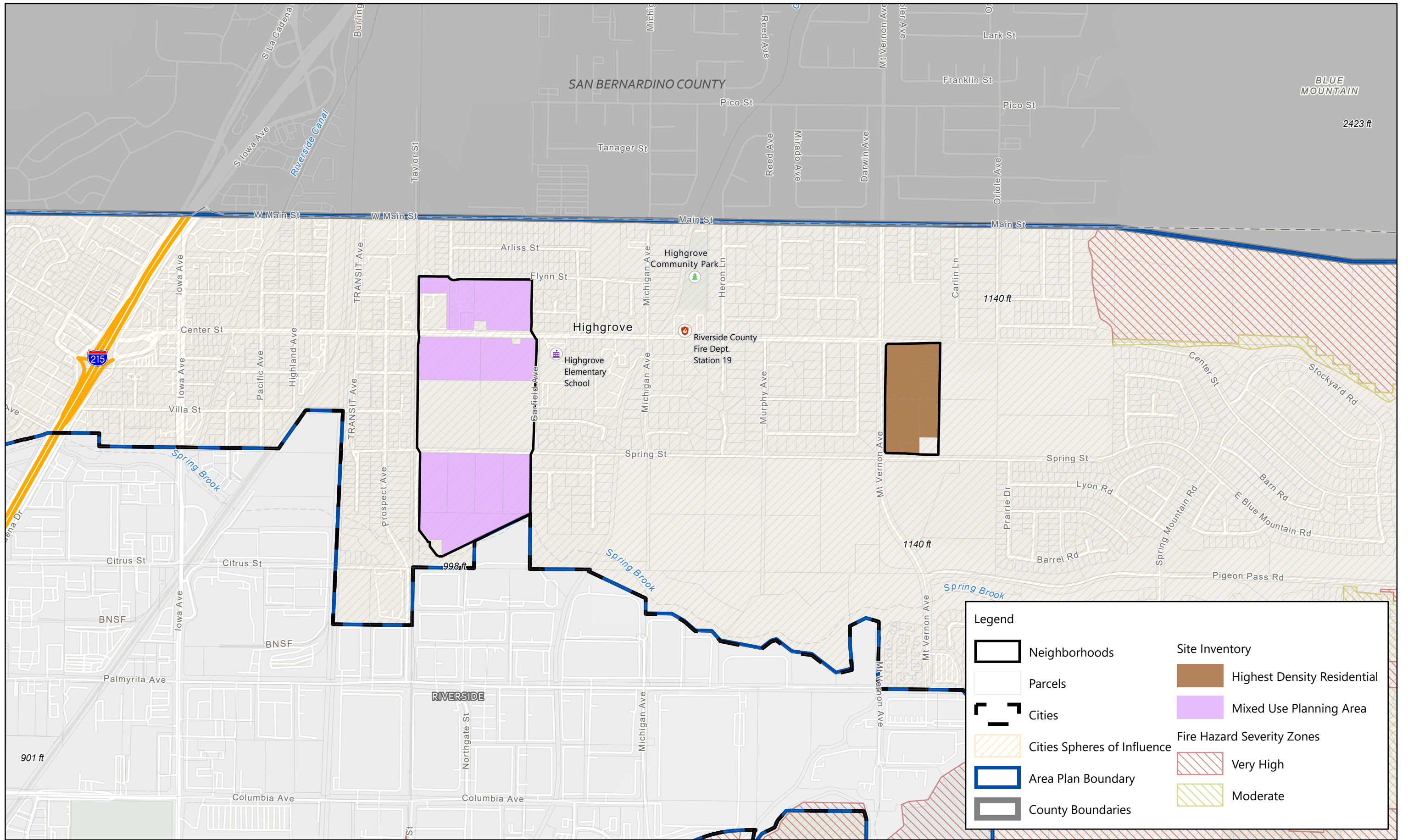


Michael Baker INTERNATIONAL

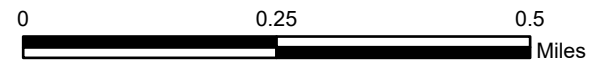


Source: ESRI, Riverside County

Figure P-21: Winchester Town Center & Winchester Town Center (Western Area)

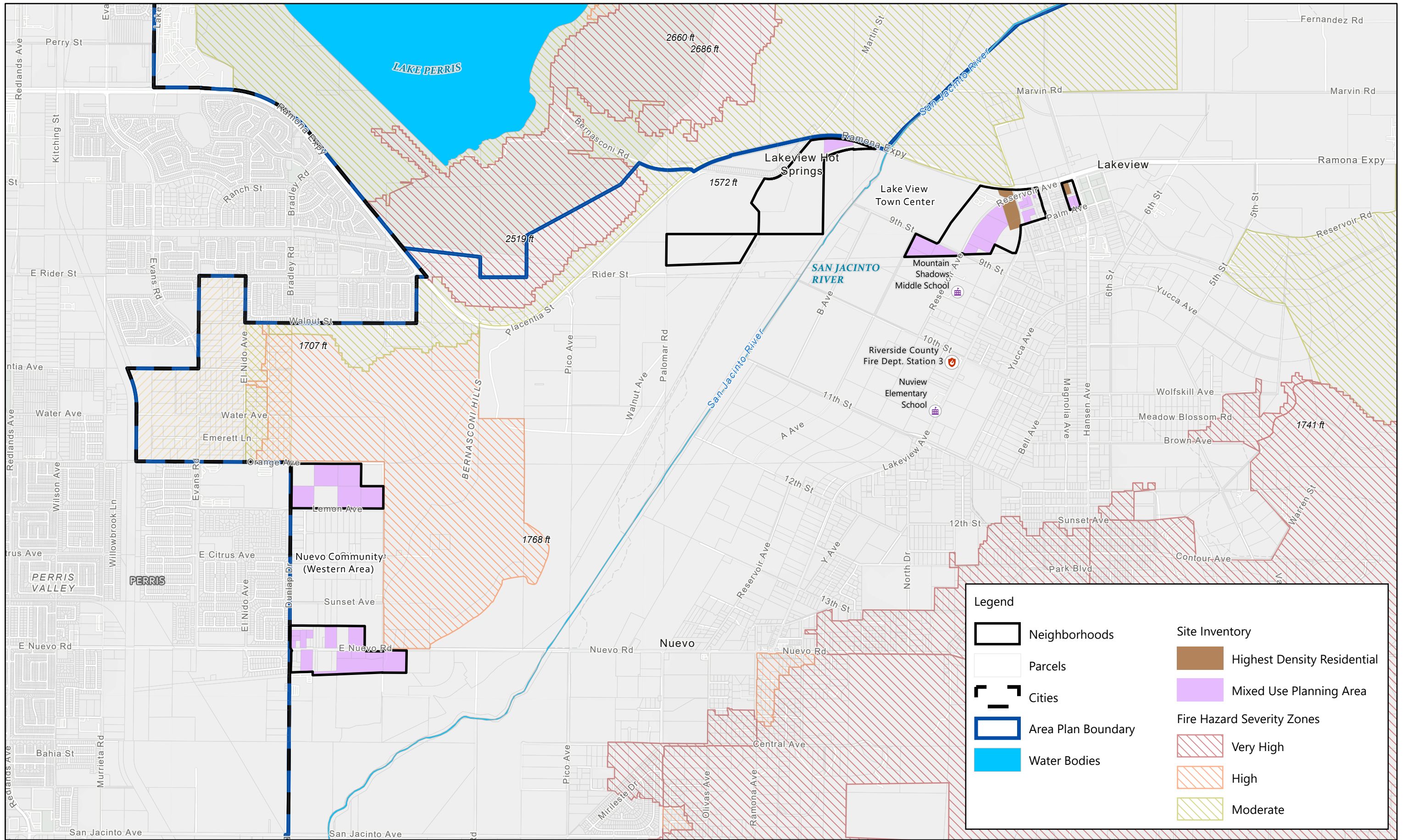


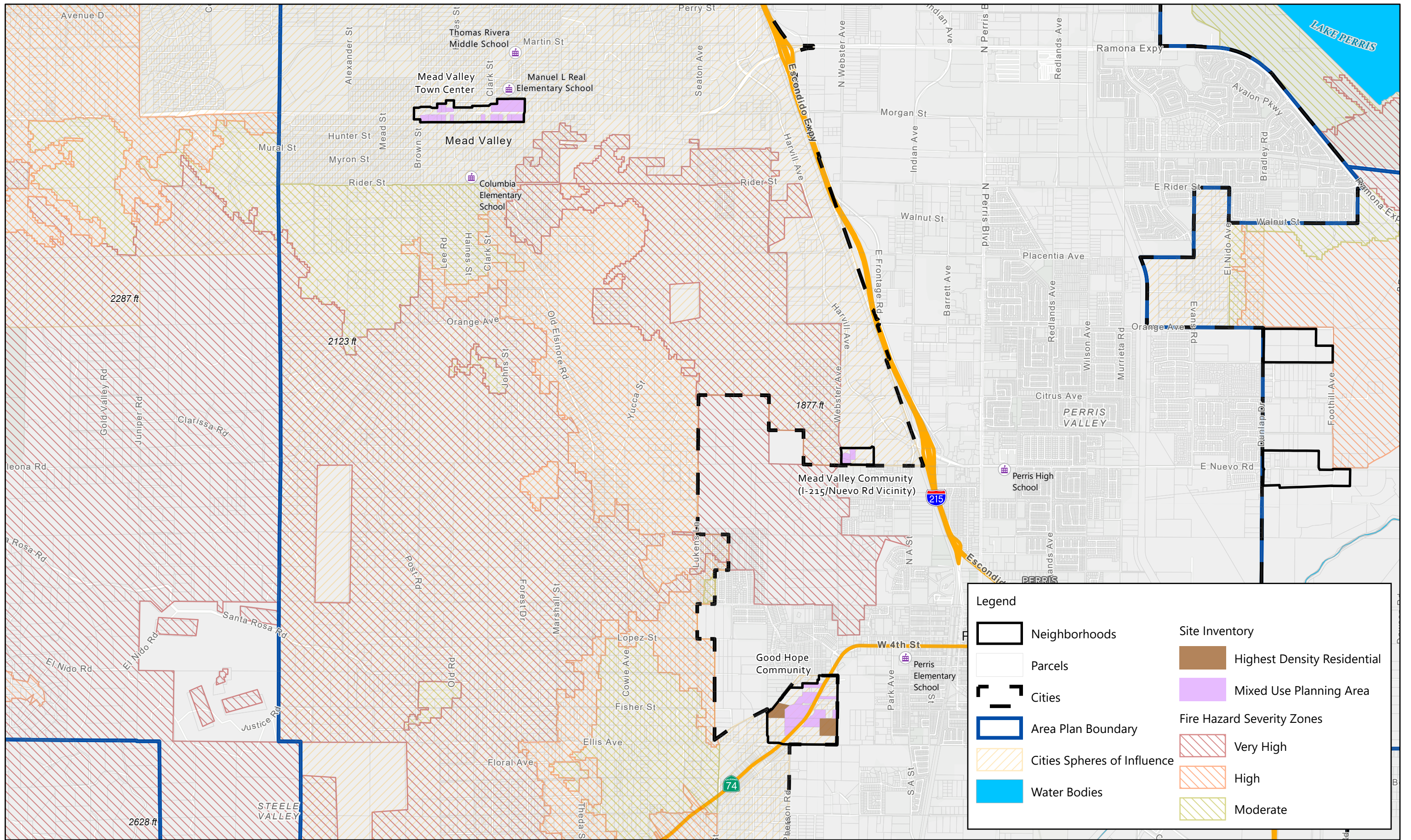
Michael Baker INTERNATIONAL



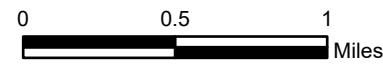
Source: ESRI, Riverside County





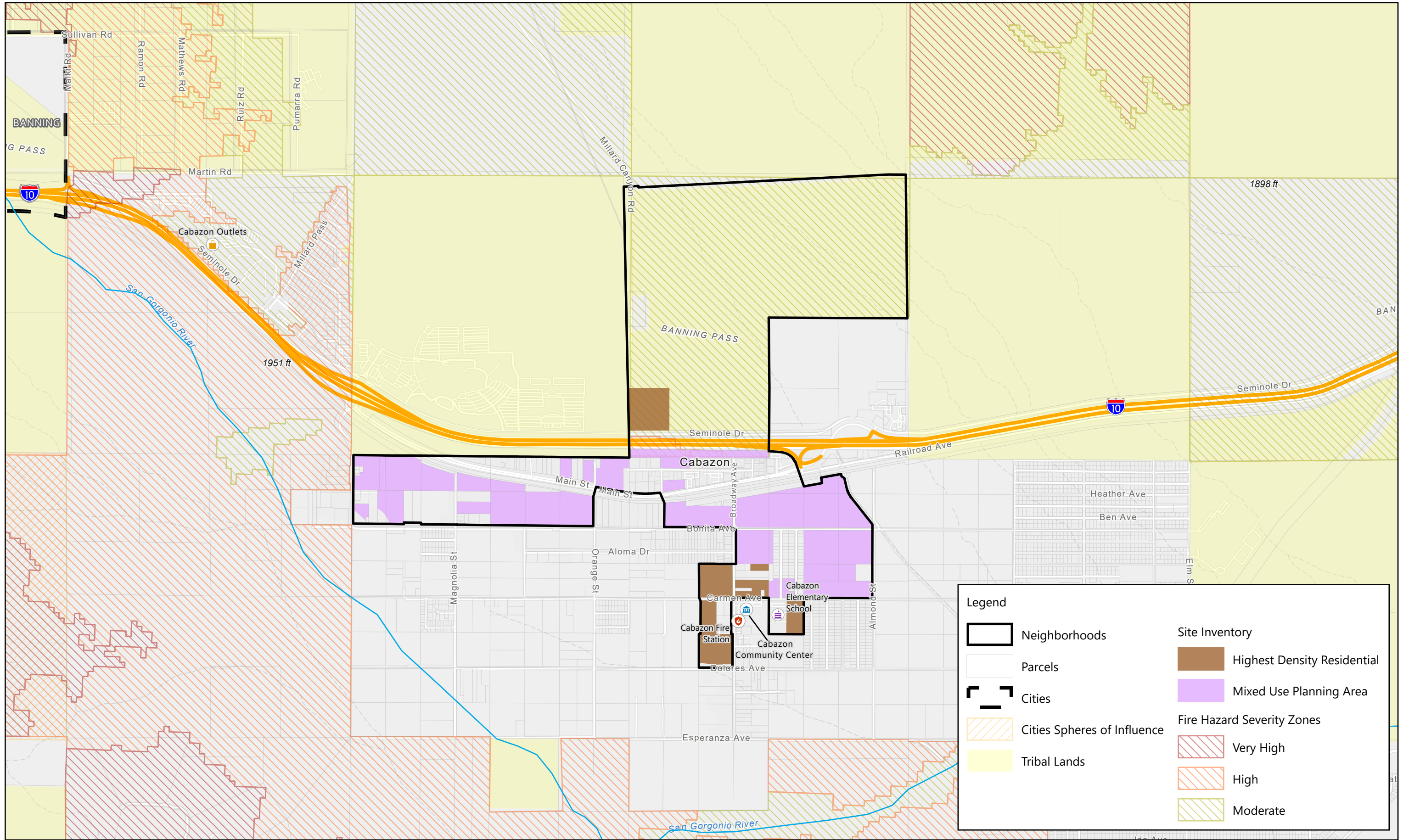


Michael Baker INTERNATIONAL

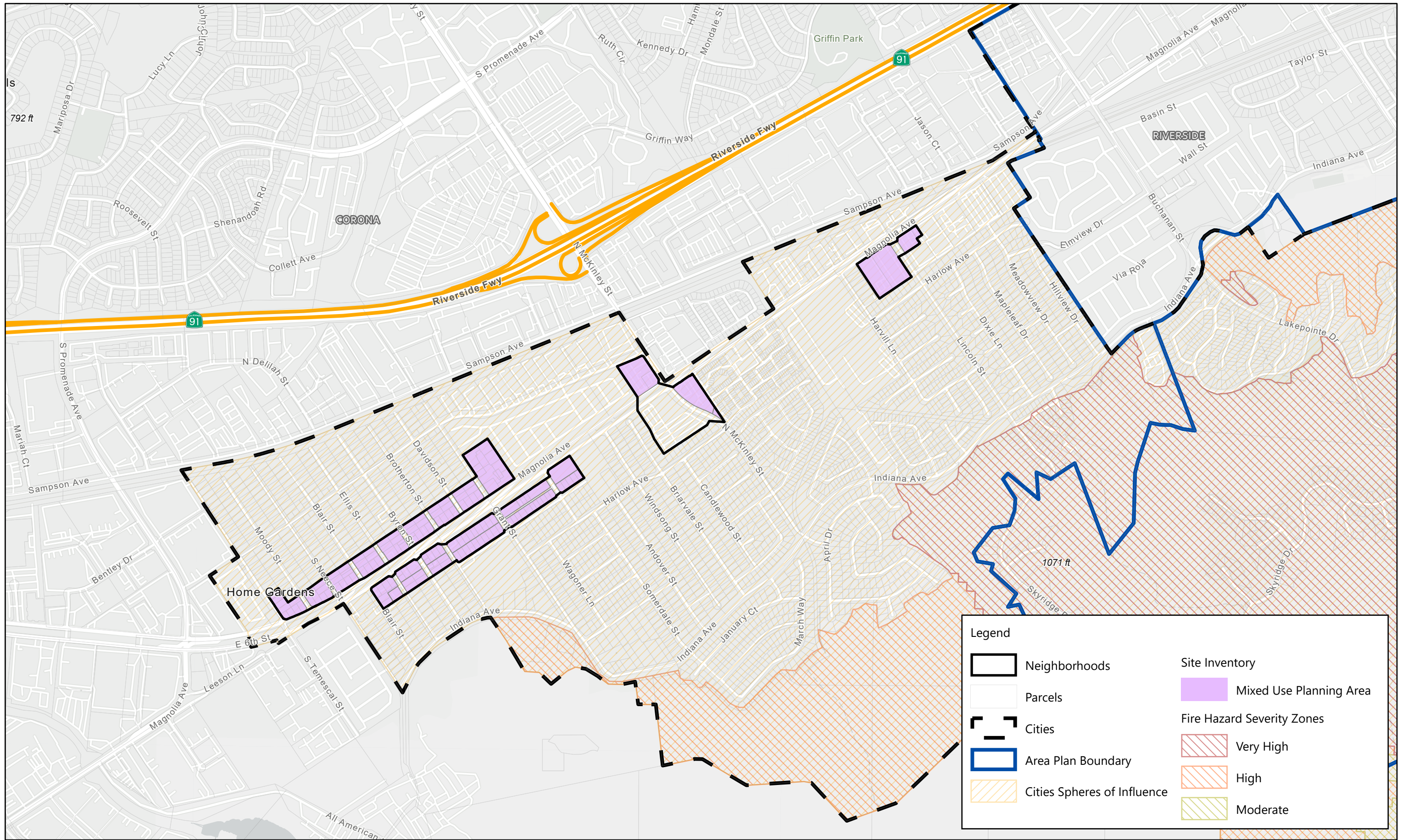


Source: ESRI, Riverside County

Figure P-24: Good Hope Community, Mead Valley Town Center, & Mead Valley Community (I-215/Nuevo Rd Vicinity)



RIVERSIDE COUNTY 6TH CYCLE HOUSING ELEMENT  
 Figure P-25: Cabazon Town Center

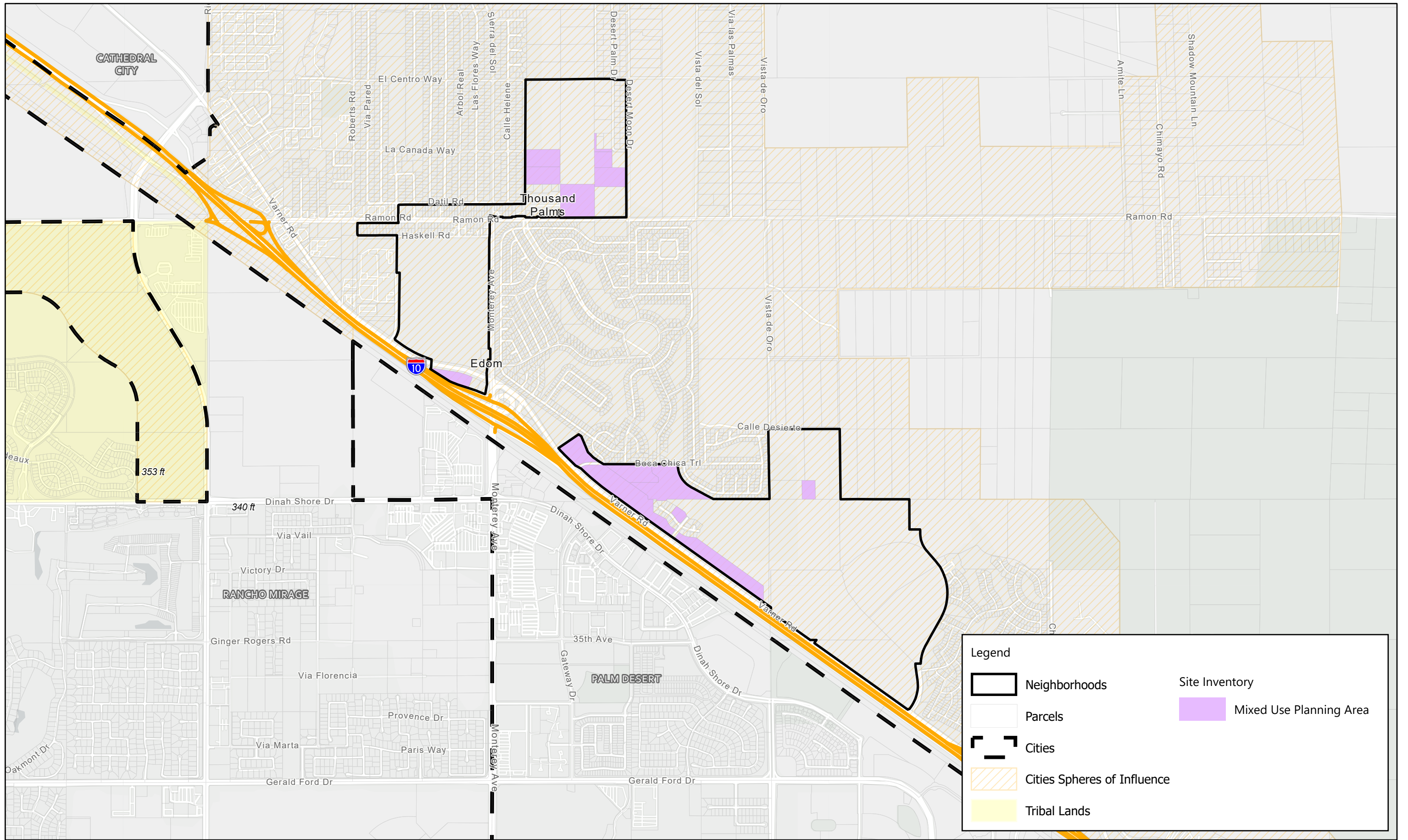


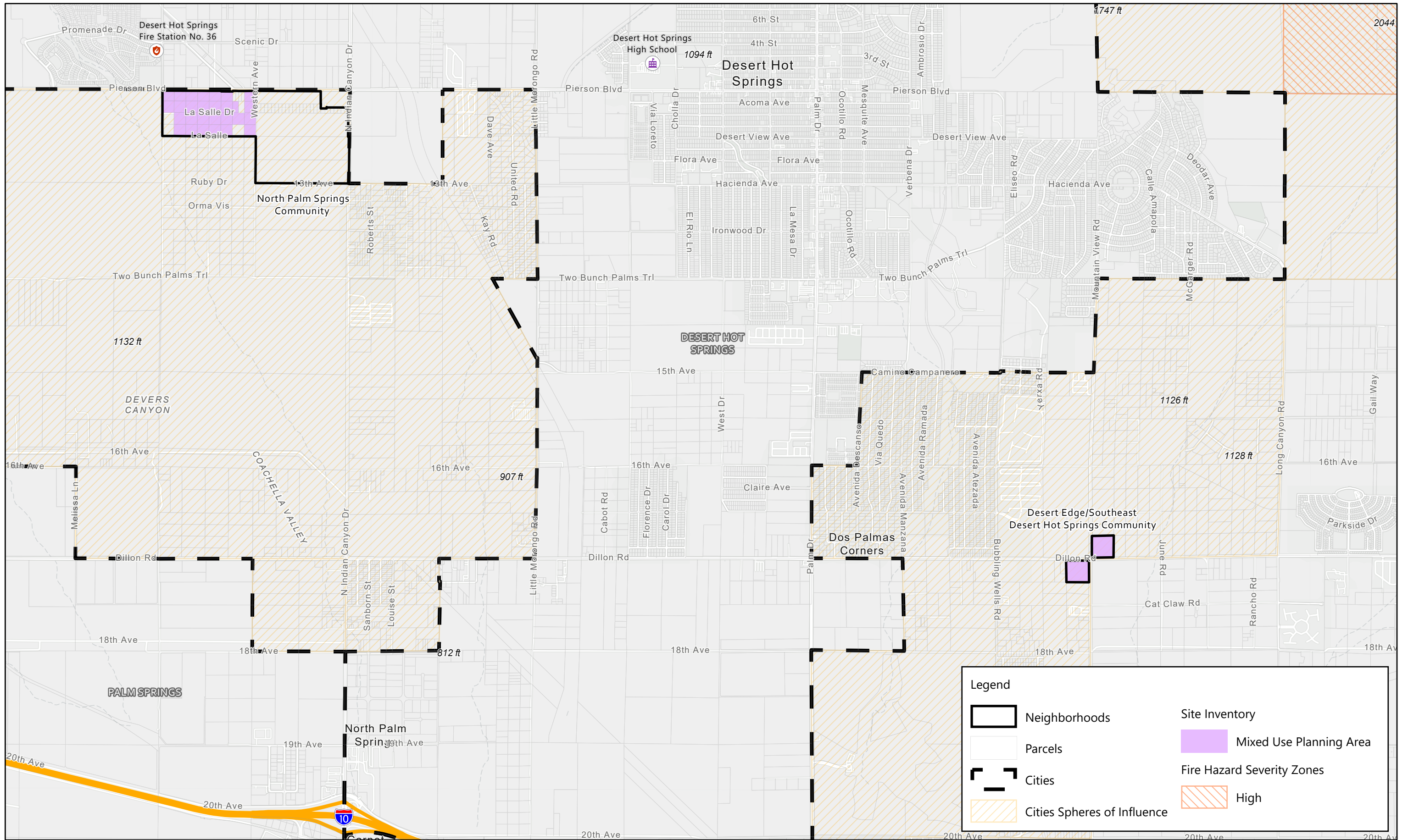
Michael Baker  
INTERNATIONAL



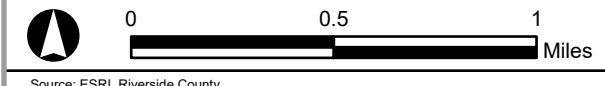
0 0.25 0.5  
Miles

Source: ESRI, Riverside County



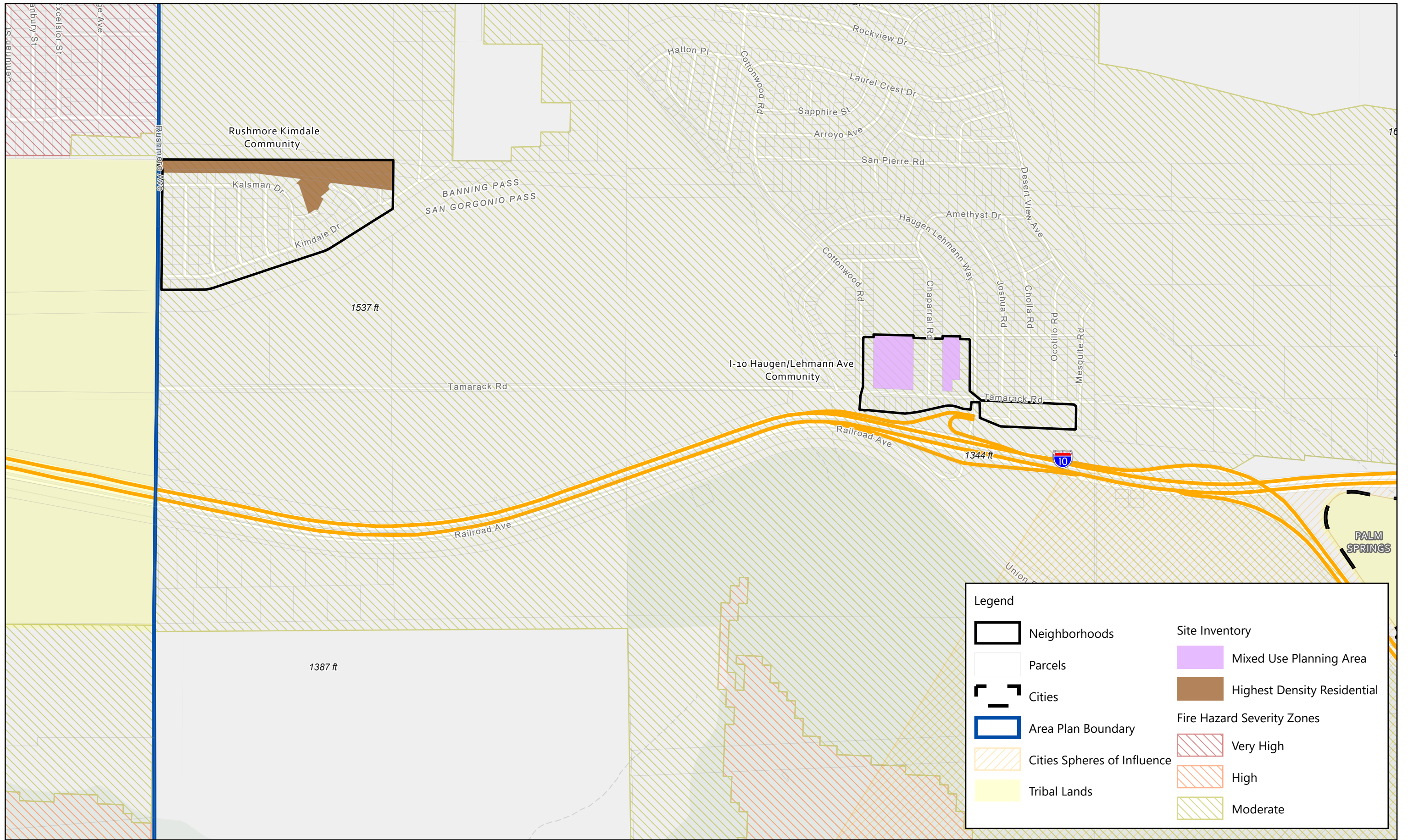


Michael Baker INTERNATIONAL



Source: ESRI, Riverside County

Figure P-28: Desert Edge/Southeast Desert Hot Springs Community & North Palm Springs Community

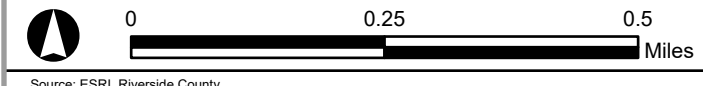


**Legend**

Neighborhoods	Site Inventory
Parcels	Highest Density Residential
Cities	<b>Fire Hazard Severity Zones</b>
Area Plan Boundary	Very High
Cities Spheres of Influence	High
Tribal Lands	Moderate



Michael Baker INTERNATIONAL



Source: ESRI, Riverside County

Figure P-29: Rushmore Kimdale Community & I-10 Haugen/Lehmann Ave Community

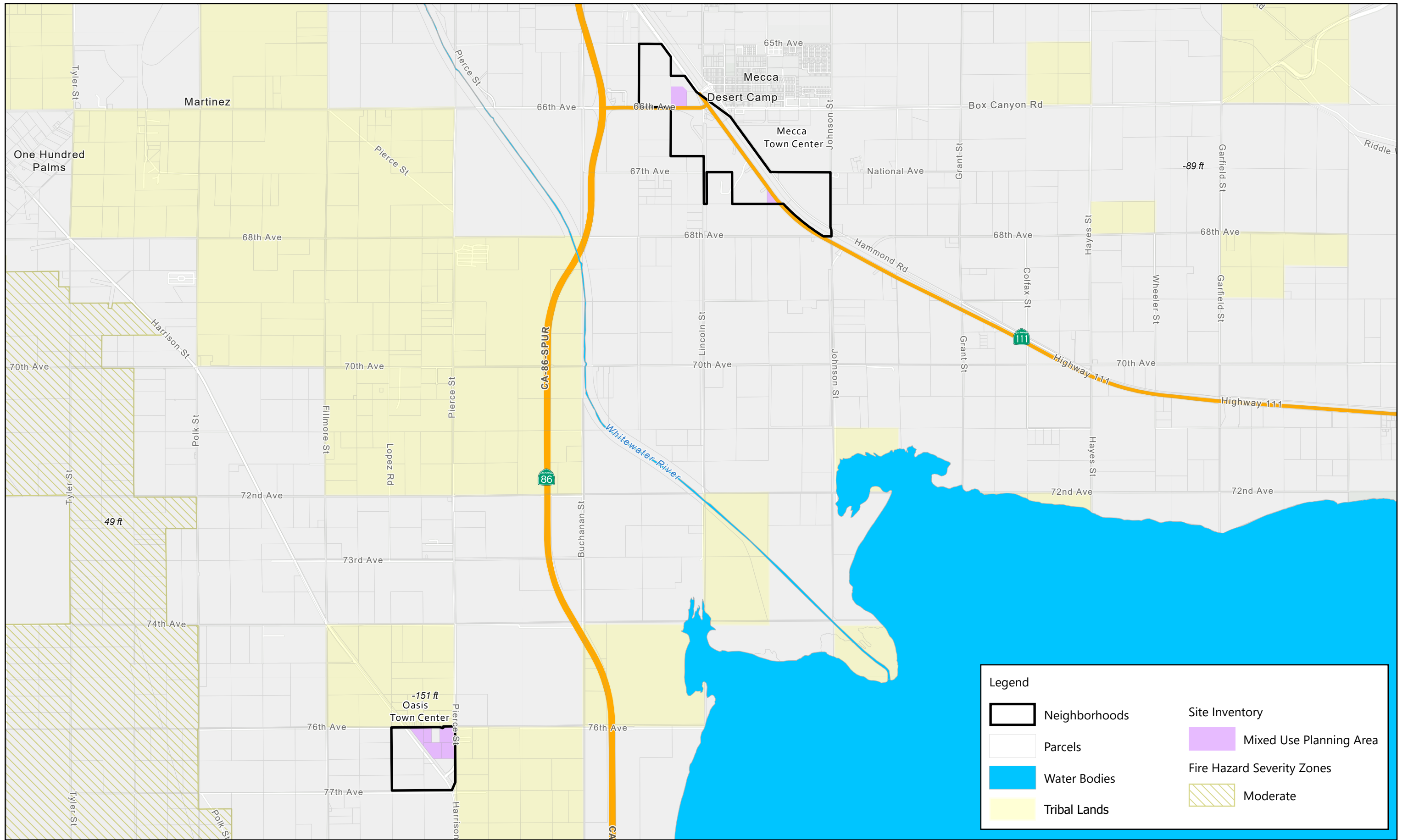


Figure P-30: Mecca & Oasis Town Center