

Figure B-5.9: 1948 Record of Survey with HH VRA

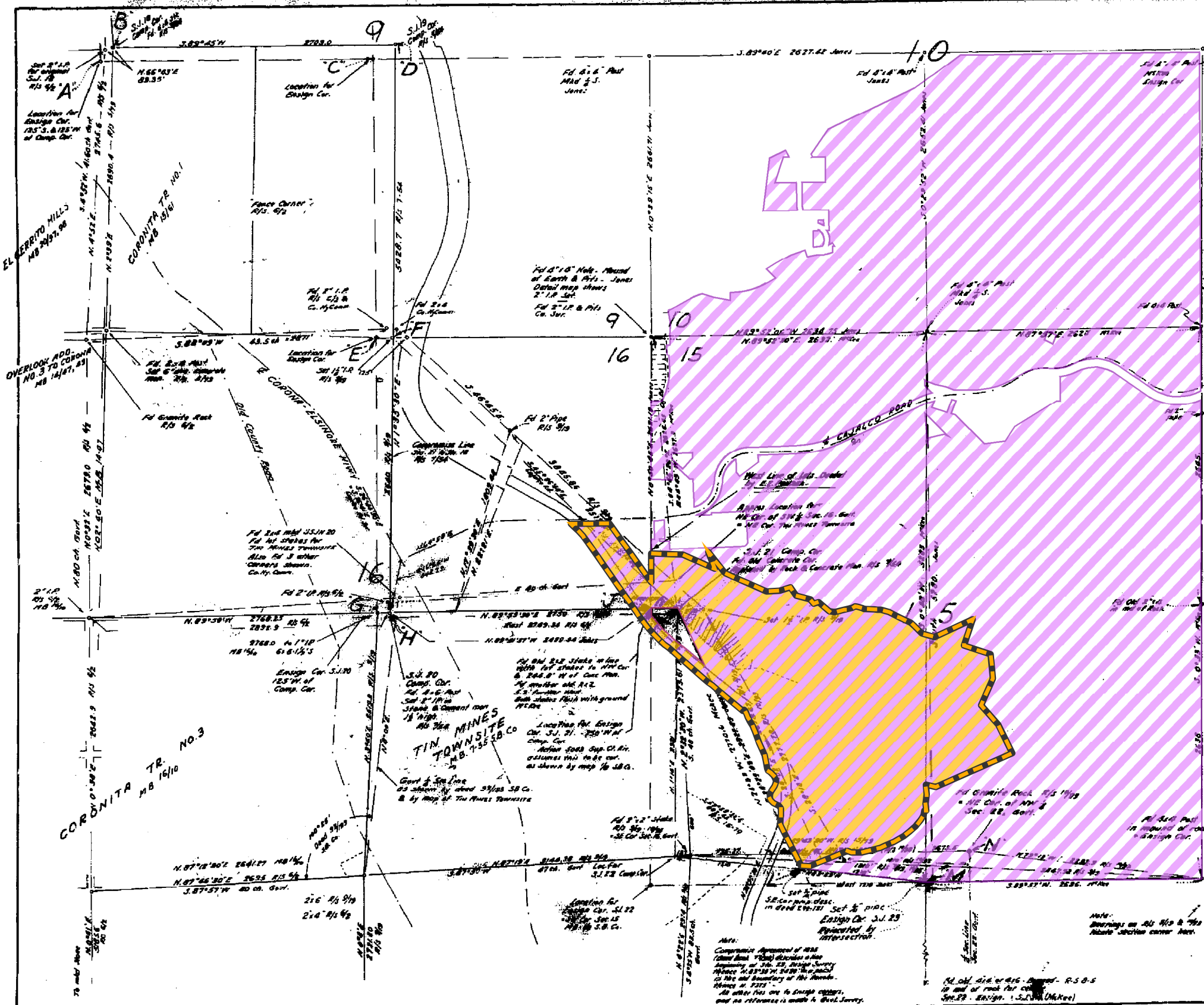
Confirmation of Geographic Scope of HH VRA
Hubbs/Harlow Quarry
Riverside County, California

Legend:

- RCL118S4 Boundary
- Area subject to Prior Confirmation (S-4 VRA)
- HH VRA

Vested Rights Relevancy/Commentary:

Harlow commission an ambitious Record of Survey of the entire HH VRA site and adjoining mineral property to define and fully exploit the mineral resources, spurred on by failed effort to acquire nearby mineral lands, coupled with rapidly expanding mineral operations, demonstrating an intent to appropriate the entire HH VRA as a mine site.



RECORD OF SURVEY

of Sec. 15 and 16 and portion of Sec. 9 and 10
T.4 S. R.6 W. S.B. 17, and in Ranch El Sabronfe
De San Jacinto M.B. 1-8 S.B. Co. Calif.

May 1948 Scale 1 in. = 600 ft.
Donald J. McKee - Licensed Surveyor

This was made to show the relative locations of corners used by previous surveys; the theoretical location of corners shown on original Gov't and Rancho Maps; and the corners and property lines established by the Compromise Agreement of 1895 and other deeds of record. Compiled from Recorded Maps, Records of Surveys, Highway and Railroad Surveys; unrecorded Maps and Surveys, by John C. Lewis, and original Surveys by Donald J. McKee to locate corners of Section 15; to determine a location for S.E. 1/4 and the S.E. corner of the property described in Deed No. 297-13. Courses and distances are those shown on the original maps as noted without adjustments.

Notes:
 "Eason" refers to survey of the Rancho El Sabronfe by Caleb Eason, unrecorded map filed in County Surveyors Office.
 "Gov't" refers to U.S. Gov't. surveys of sections adjoining the Rancho.
 "Comp. Cor." refers to corners established by the Compromise Agreement of 1895 - Deed No. 297-13.
 "Co. Hwy. Cor." refers to Survey of Corona Elsinore Highway Riverside Co. Highway Commissioners F.B. 22 and 26.
 "Jones" refers to survey by Franklin D. Jones, C.E. for E.R. Porech in 1925 - unrecorded map filed in County Surveyors Office.

I hereby certify that I am a Licensed Land Surveyor in the State of California, and that this map consisting of one sheet, correctly represents a survey made by me in 1947 and that all the monuments shown hereon for Section 15 actually exist and their positions are as hereon shown.
Donald J. McKee
Licensed Land Surveyor

Notes: Bearings are based on the center-line of Corona Elsinore Highway and are true courses.

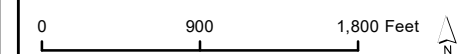
M.B. 1 pp. 8 S.B. Co	June 1868
M.B. 7 pp. 35 S.B. Co	1888
Caleb A. Eason Survey	1891
John Goldsworthy - Gov't Survey	1874
Comp. Agreement	1904

This map prepared at the request of Leila Mae Harlow

FILED
 DEC - 3 1948
 JACK A. ROSS
 County Recorder
 #100 - *Leila Mae Harlow*
 Examined December 3, 1948

AC Keith by C.T. Wornby Deputy
County Surveyor Riverside County Calif
and filed to make valuable information a public record.

RS 16/26



Disclaimer: The data was mapped for planning purposes only. No liability is assumed for accuracy of the data shown.

Prepared by: Sage Thurmond, Compass Land Group
3140 Peacekeeper Way #102, McClellan Park, CA 95652

