

RIVERSIDE COUNTY  
PLANNING DEPARTMENT

# Good Hope Community

*(Preliminary Draft for Review and Discussion Purposes)*

117°15'0"W

117°14'30"W

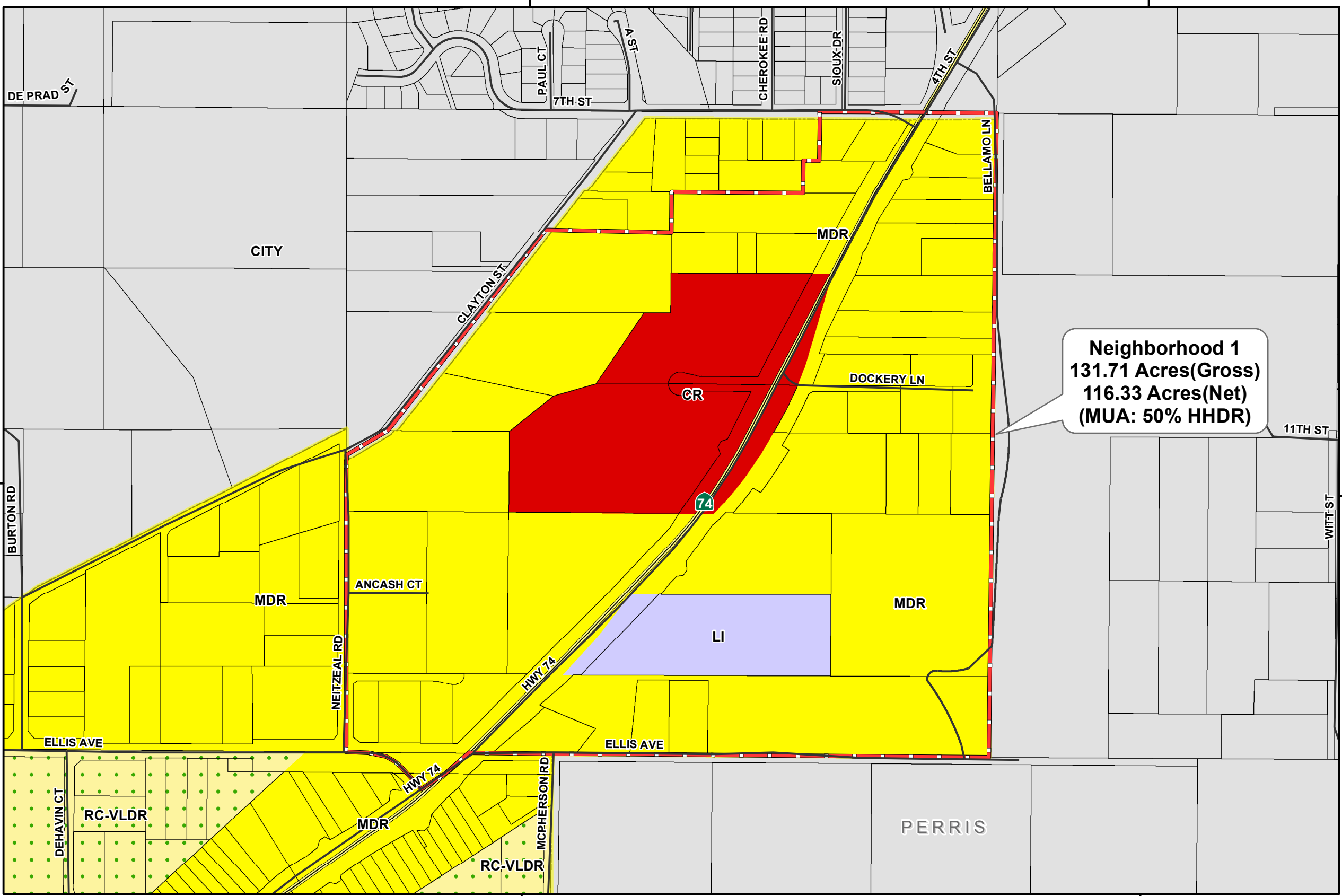
**Supervisorial District 1  
Mead Valley Area Plan**

**Riverside County  
General Plan Housing Element**

- Roads
- Proposed HHDR/MUA Neighborhoods
- Supervisorial District
- PARCELS
- Rail Roads
- Cities
- Area Plans

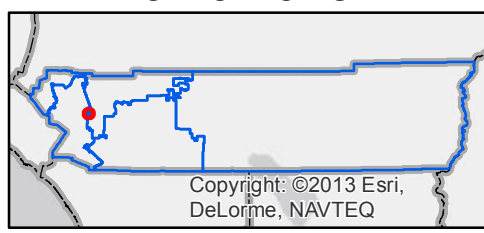
**General Plan Land Use**

- RC-VLDR
- Medium Density Residential
- Commercial Retail
- Light Industrial
- CITY

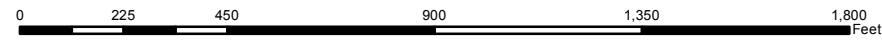


**Neighborhood 1**  
**131.71 Acres(Gross)**  
**116.33 Acres(Net)**  
**(MUA: 50% HHDR)**

6/16/2015



**Disclaimer:** Maps and data are to be used for reference purposes only. Map features are approximate, and are not necessarily accurate to surveying or engineering standards. The County of Riverside makes no warranty or guarantee as to the content (the source is often third party), accuracy, timeliness, or completeness of any of the data provided, and assumes no legal responsibility for the information contained on this map. Any use of this product with respect to accuracy and precision shall be the sole responsibility of the user.



1 inch = 417 feet

