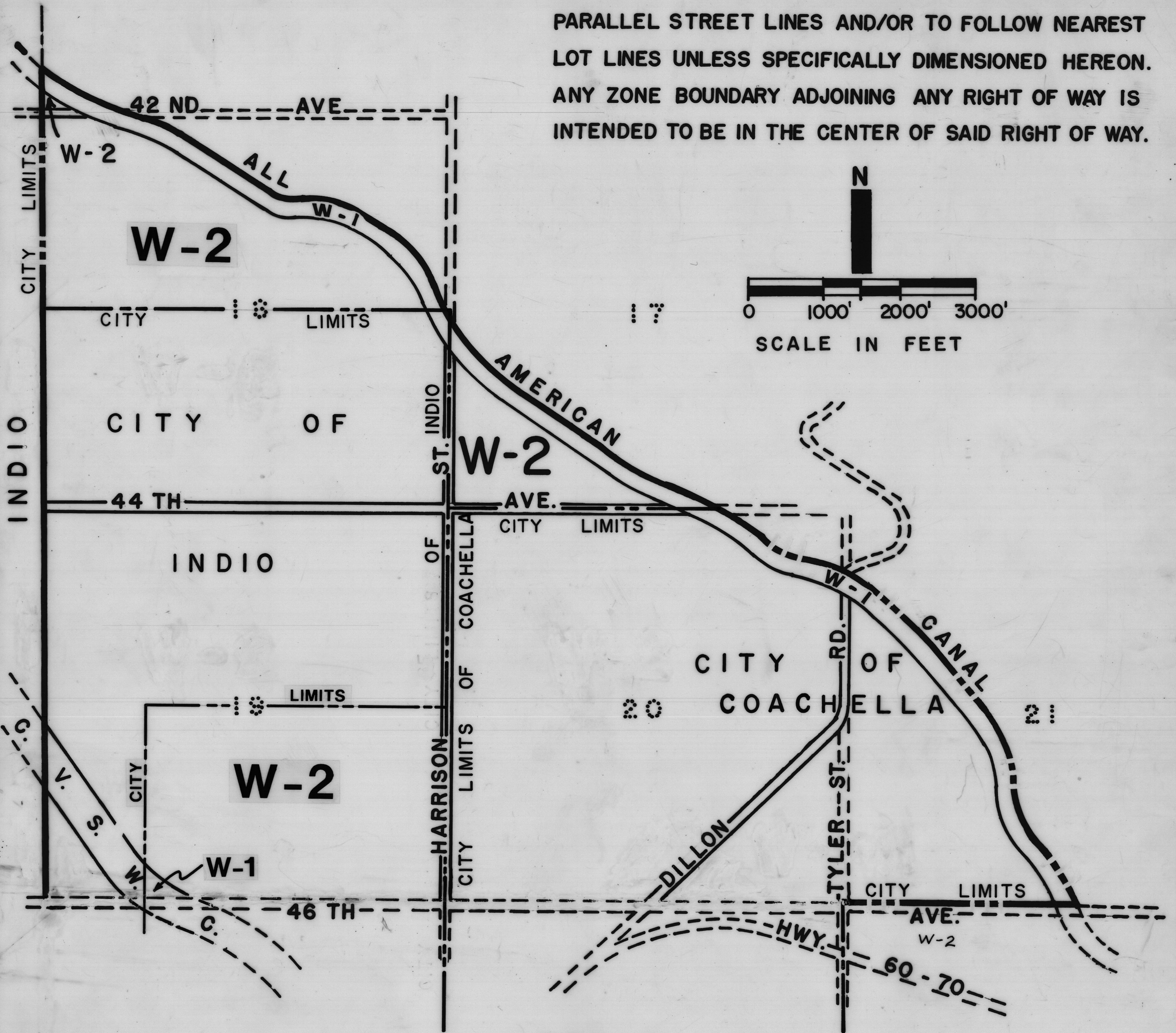


NOTE... ZONE BOUNDARY LINES ARE INTENDED TO PARALLEL STREET LINES AND/OR TO FOLLOW NEAREST LOT LINES UNLESS SPECIFICALLY DIMENSIONED HEREON. ANY ZONE BOUNDARY ADJOINING ANY RIGHT OF WAY IS INTENDED TO BE IN THE CENTER OF SAID RIGHT OF WAY.



LEGEND

W-2

CONTROLLED DEVELOPMENT AREAS

W-1

WATERCOURSE, WATERSHED AND CONSERVATION AREAS

C-T

TOURIST COMMERCIAL

THIS MAP ADOPTED BY ORDINANCE No. 348.226
BOARD OF SUPERVISORS, RIVERSIDE CO. CALIF.
WILLIAM E. JONES CHAIRMAN
OCTOBER 14, 1963

T. 5S., R. 8E.

MAP NO. 41a

OFFICIAL ZONING PLAN LOWER COACHELLA VALLEY DISTRICT

THE RIVERSIDE COUNTY PLANNING COMMISSION