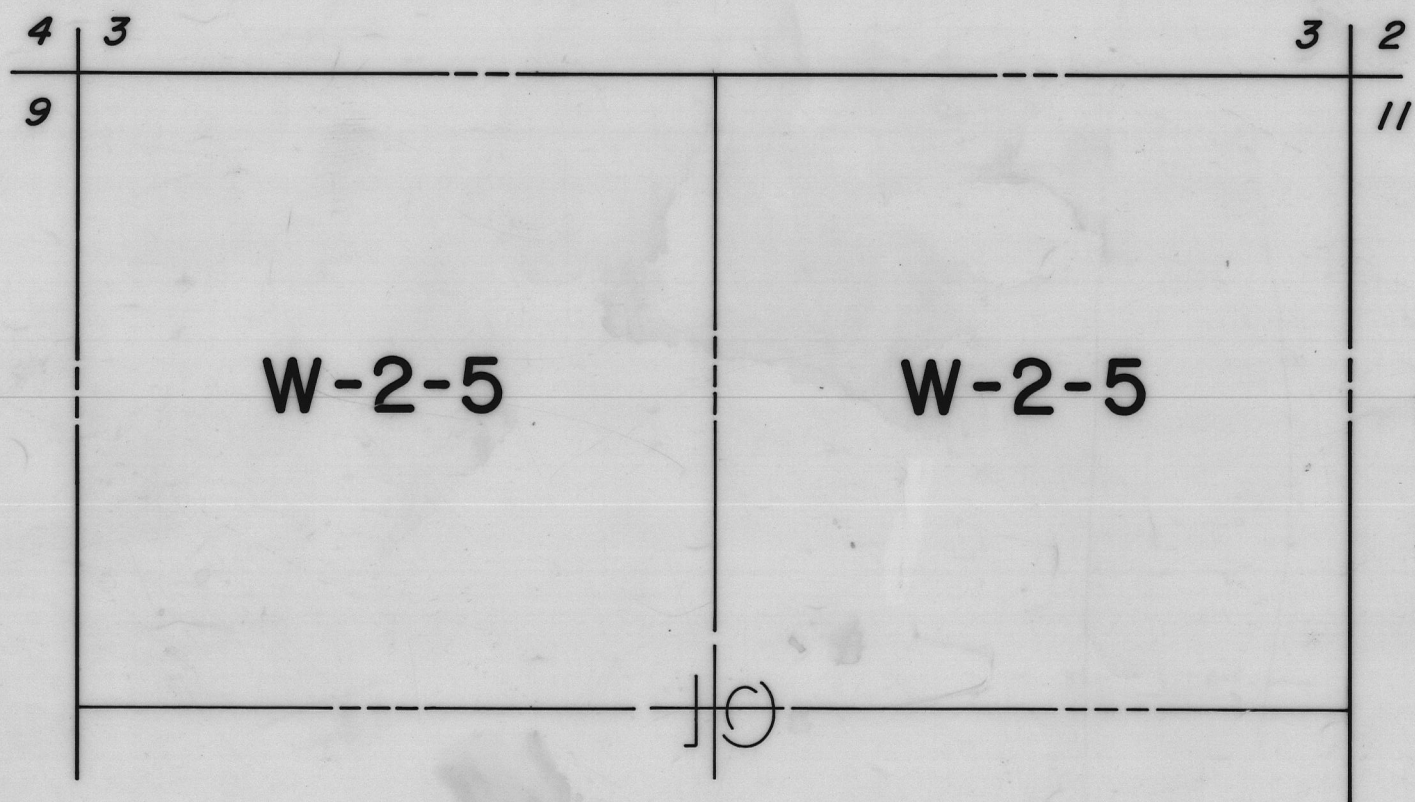


SAN GORGONIO PASS

DISTRICT NO.1

OFFICIAL ZONING PLAN

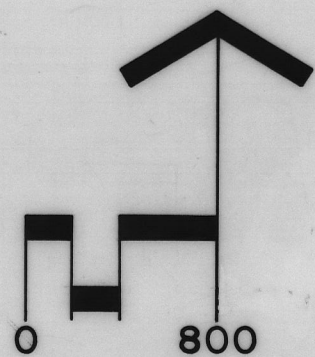
MAP NO.28



N 1/2 SEC. 10 T.3S. R.3E., S.B.B.&M.

W-2-5

CONTROLLED DEVELOPMENT AREAS
5 ACRE MIN. LOT AREA



THIS MAP ADOPTED BY ORDINANCE NO. 348.10
ON JANUARY 10, 1960

REVISED
1-10-60

28

RIVERSIDE COUNTY PLANNING COMMISSION