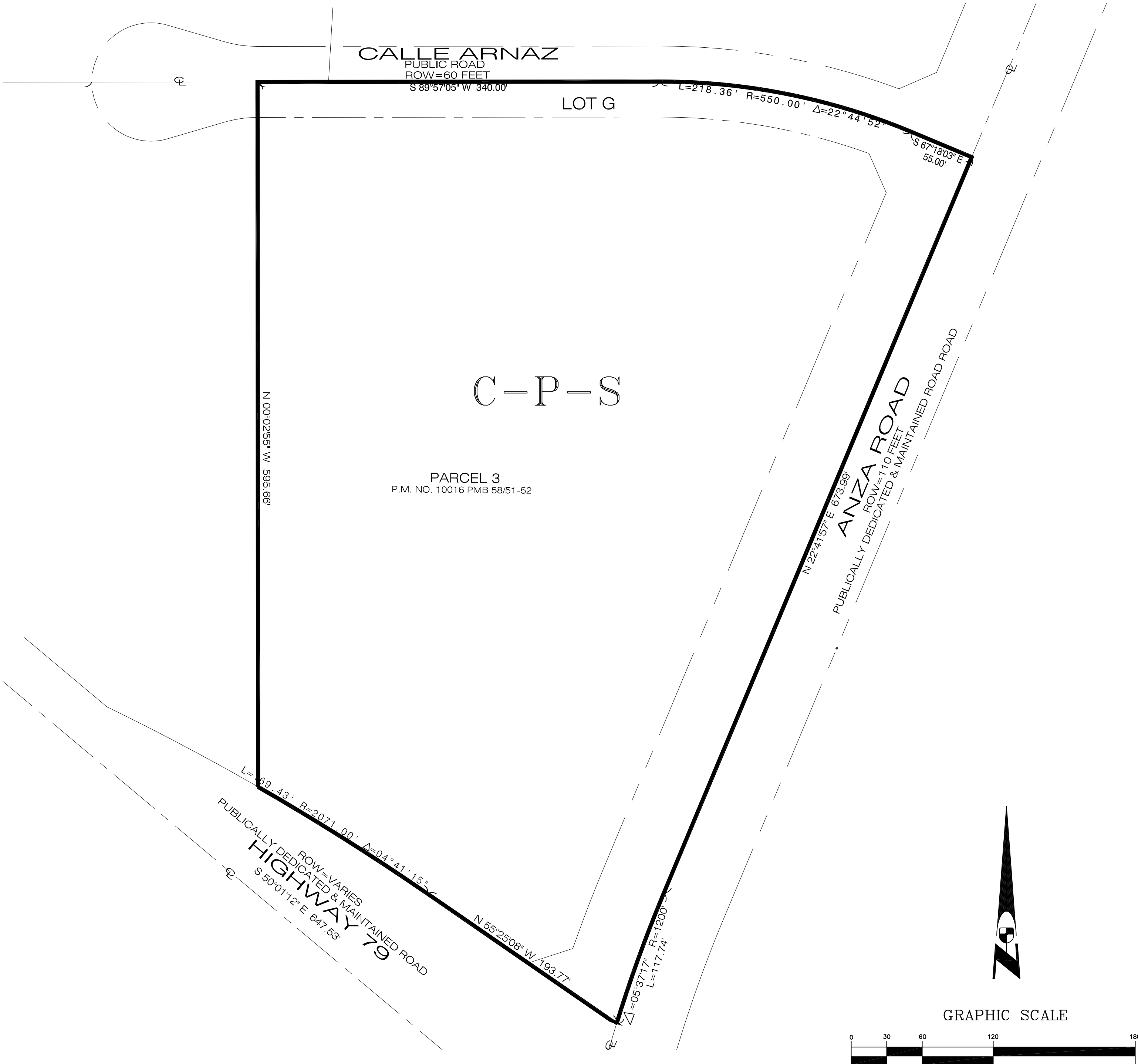


RANCHO CALIFORNIA AREA
SEC 11, T8S.R2W. S.B.B.& M.



C-P-S SCENIC HIGHWAY COMMERCIAL

MAP NO. 2.2398
CHANGE OF OFFICIAL ZONING PLAN
AMENDING
MAP NO. 2 ORDINANCE NO. 348
CHANGE OF ZONE CASE NO. 07896
ADOPTED BY ORDINANCE NO. 348.4842
DATED: SEPTEMBER 13, 2016
RIVERSIDE COUNTY BOARD OF SUPERVISORS