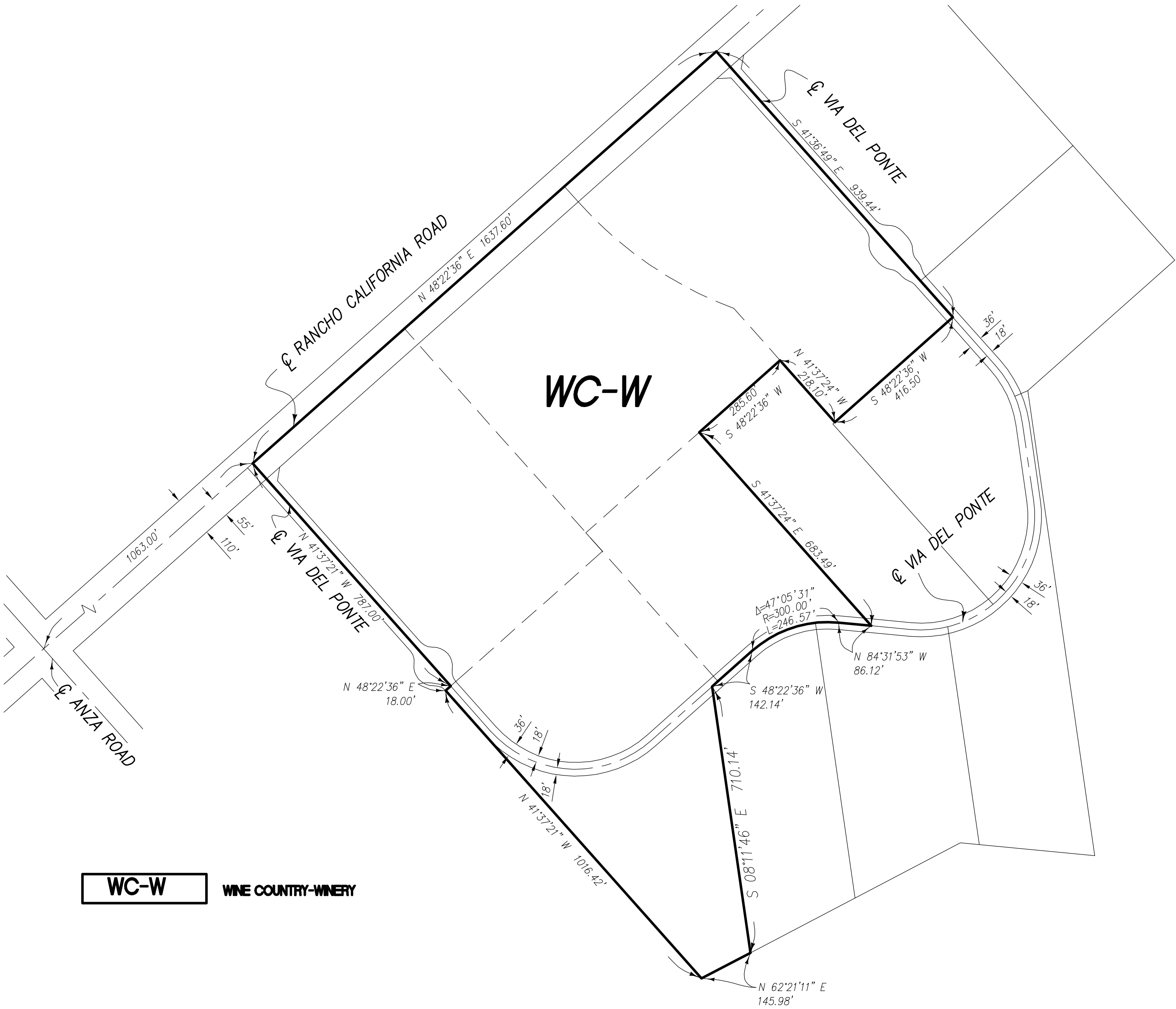


RANCHO CALIFORNIA AREA
PORTION SEC. 25 AND 26 T.7.S., R.2 W.



MAP NO. 2.2395
CHANGE OF OFFICIAL ZONING PLAN
AMENDING
MAP NO. 2 ORDINANCE NO. 348
CHANGE OF ZONE CASE NO. 7892
ADOPTED BY ORDINANCE NO. 348.4837
MAY 24, 2016
RIVERSIDE COUNTY BOARD OF SUPERVISORS