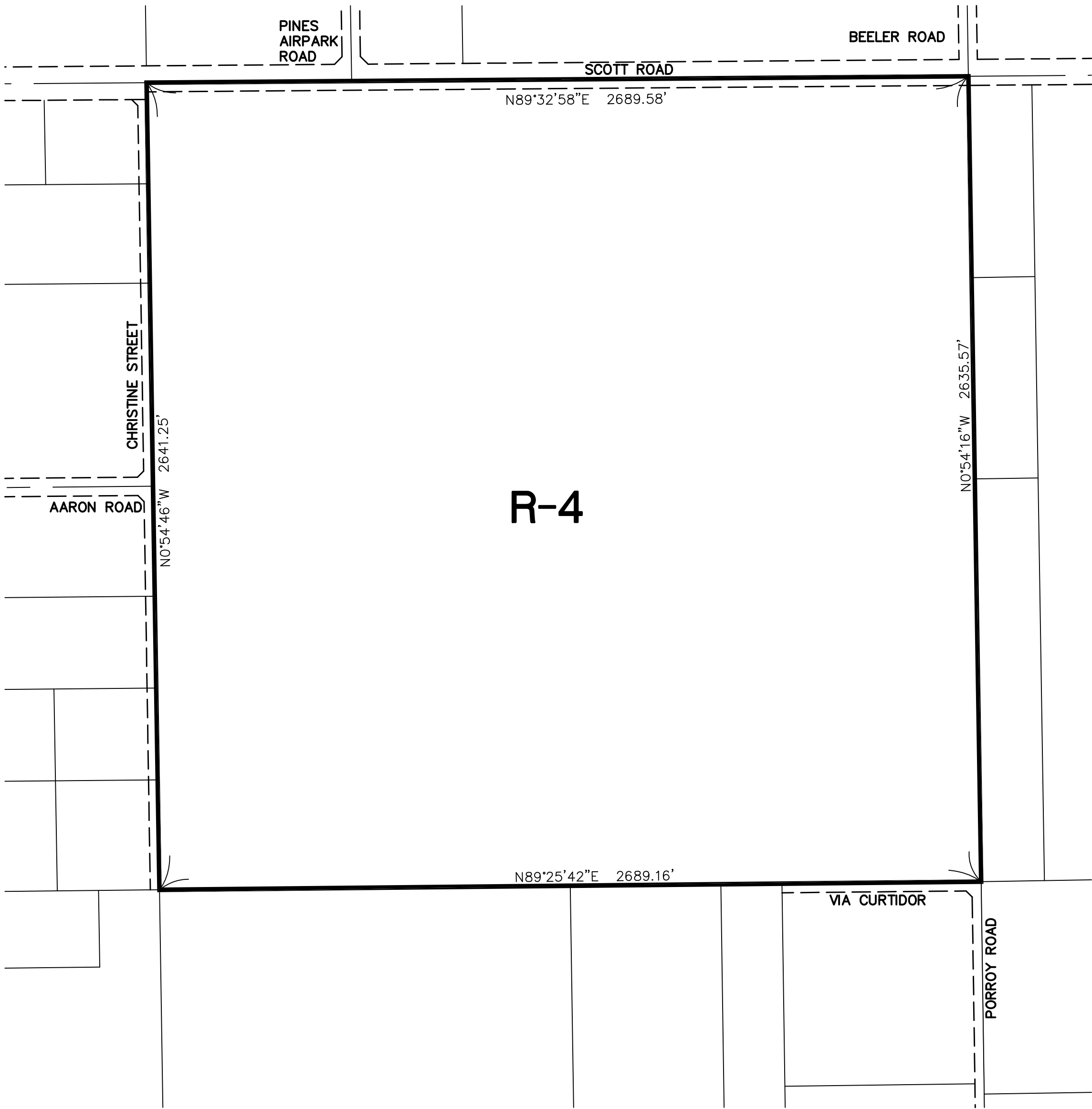


FRENCH VALLEY AREA
SECTION 20, TOWNSHIP 6 SOUTH, RANGE 2 WEST SBM.



LEGEND

R-4 PLANNED RESIDENTIAL

MAP NO. 2.2384
CHANGE OF OFFICIAL ZONING PLAN
AMENDING
MAP NO. 2 ORDINANCE NO. 348
CHANGE OF ZONE CASE NO. 7865
ADOPTED BY ORDINANCE NO. 348.4820
DECEMBER 15, 2015
RIVERSIDE COUNTY BOARD OF SUPERVISORS

ASSESSOR'S PARCEL NUMBER 472-070-001

