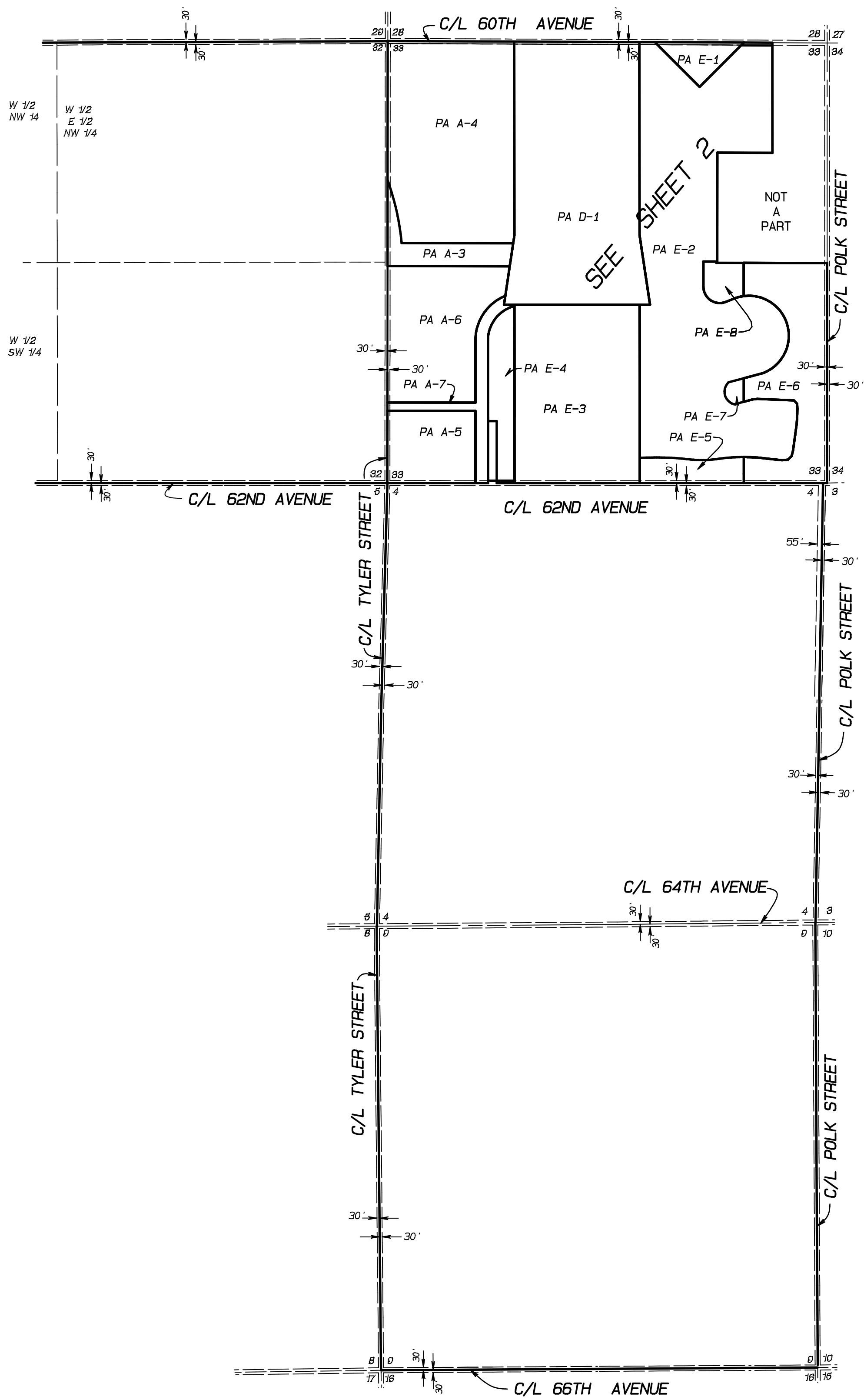


SEC. 33, T.6S., R.8E, S.B.B. & M.
SEC. 9, T.7S., R.8E., S.B.B. & M.



LEGEND

SP ZONE

SPECIFIC PLAN (S.P. 303)

MAP NO. 41.090

CHANGE OF OFFICIAL ZONING PLAN
LOWER COACHELLA VALLEY DISTRICT

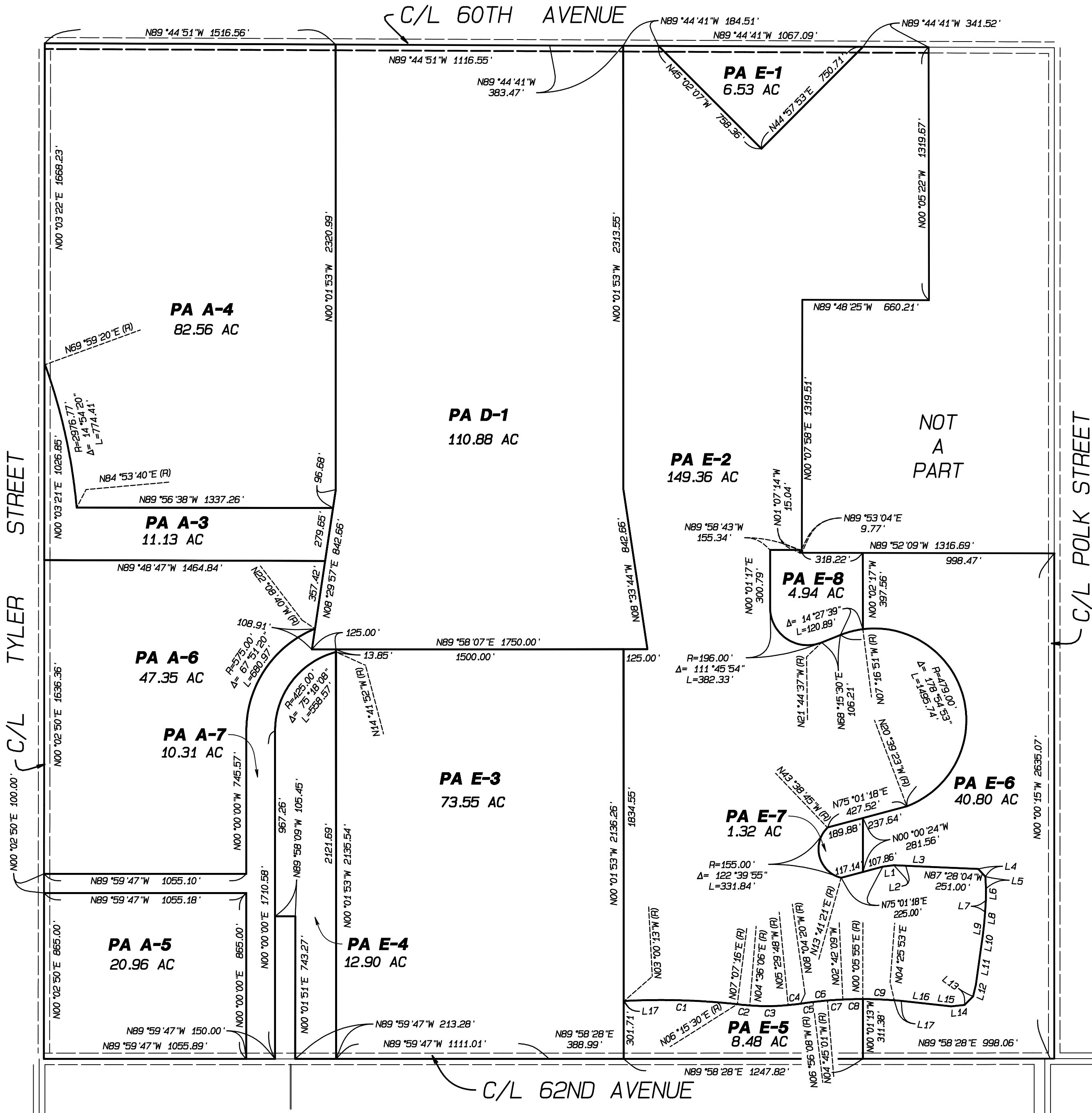
CHANGE OF ZONE CASE NO. 07852
AMENDING ORDINANCE NO. 348
ADOPTED BY ORDINANCE NO. 348.4801
ADOPTION DATE MARCH 24, 2015
RIVERSIDE COUNTY BOARD OF SUPERVISORS



SCALE IN FEET



SEC. 33, T.6S., R.8E, S.B.B. & M.
SEC. 9, T.7S., R.8E., S.B.B. & M.



LEGEND

SP ZONE

SPECIFIC PLAN (S.P. 303)

LINE	BEARING	DISTANCE
L1	N82°37'30"E	57.86'
L2	N87°28'04"W	62.00'
L3	N87°28'04"W	127.00'
L4	N43°20'08"W	54.71'
L5	N03°10'55"W	62.00'
L6	N00°49'08"E	61.99'
L7	N03°11'44"E	62.00'
L8	N05°04'47"E	65.00'
L9	N06°57'50"E	62.00'
L10	N07°56'05"E	65.00'
L11	N07°56'08"E	189.00'
L12	N13°10'29"E	62.85'
L13	N45°34'03"E	63.12'
L14	N83°55'38"E	70.37'
L15	N83°44'26"W	65.39'
L16	N83°47'16"W	196.15'
L17	N85°04'53"W	36.65'

CURVE	RADIUS	DELTA	LENGTH
C1	3655.29'	9°15'43"	590.88'
C2	1201.61'	3°06'52"	65.32'
C3	1136.27'	10°05'54"	200.27'
C4	1244.00'	3°00'50"	65.44'
C5	2499.91'	1°30'12"	65.59'
C6	1978.09'	2°11'00"	75.38'
C7	1569.74'	2°55'02"	79.92'
C8	2246.22'	2°40'58"	105.17'
C9	2206.42'	4°14'59"	163.66'



SCALE IN FEET



CHANGE OF OFFICIAL ZONING PLAN
LOWER COACHELLA VALLEY DISTRICT

CHANGE OF ZONE CASE NO. 07852
AMENDING ORDINANCE NO. 348
ADOPTED BY ORDINANCE NO. 348.4801
ADOPTION DATE MARCH 24, 2015
RIVERSIDE COUNTY BOARD OF SUPERVISORS

MAP NO. 41.090