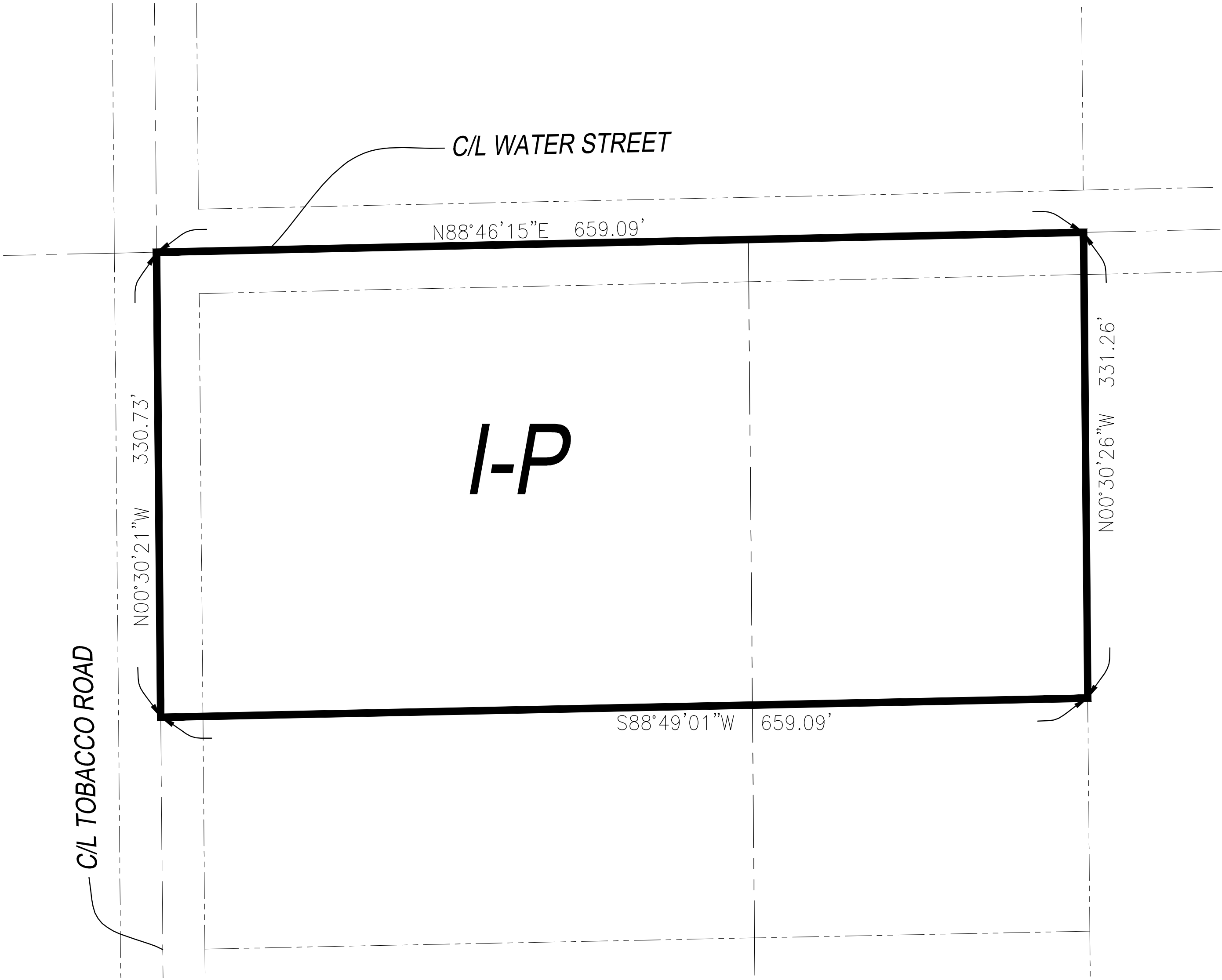


RANCHO CALIFORNIA AREA
SEC. 13 T 4 S, R 4 W S. B. & M.



I-P INDUSTRIAL PARK

MAP NO. 2.2392
CHANGE OF OFFICIAL ZONING PLAN
AMENDING
MAP NO. 2, ORDINANCE NO. 348
CHANGE OF ZONE CASE NO. 7830

ADOPTED BY ORDINANCE NO. 348.4829
JUNE 2, 2016

RIVERSIDE COUNTY BOARD OF SUPERVISORS

APN'S 317-270-002

