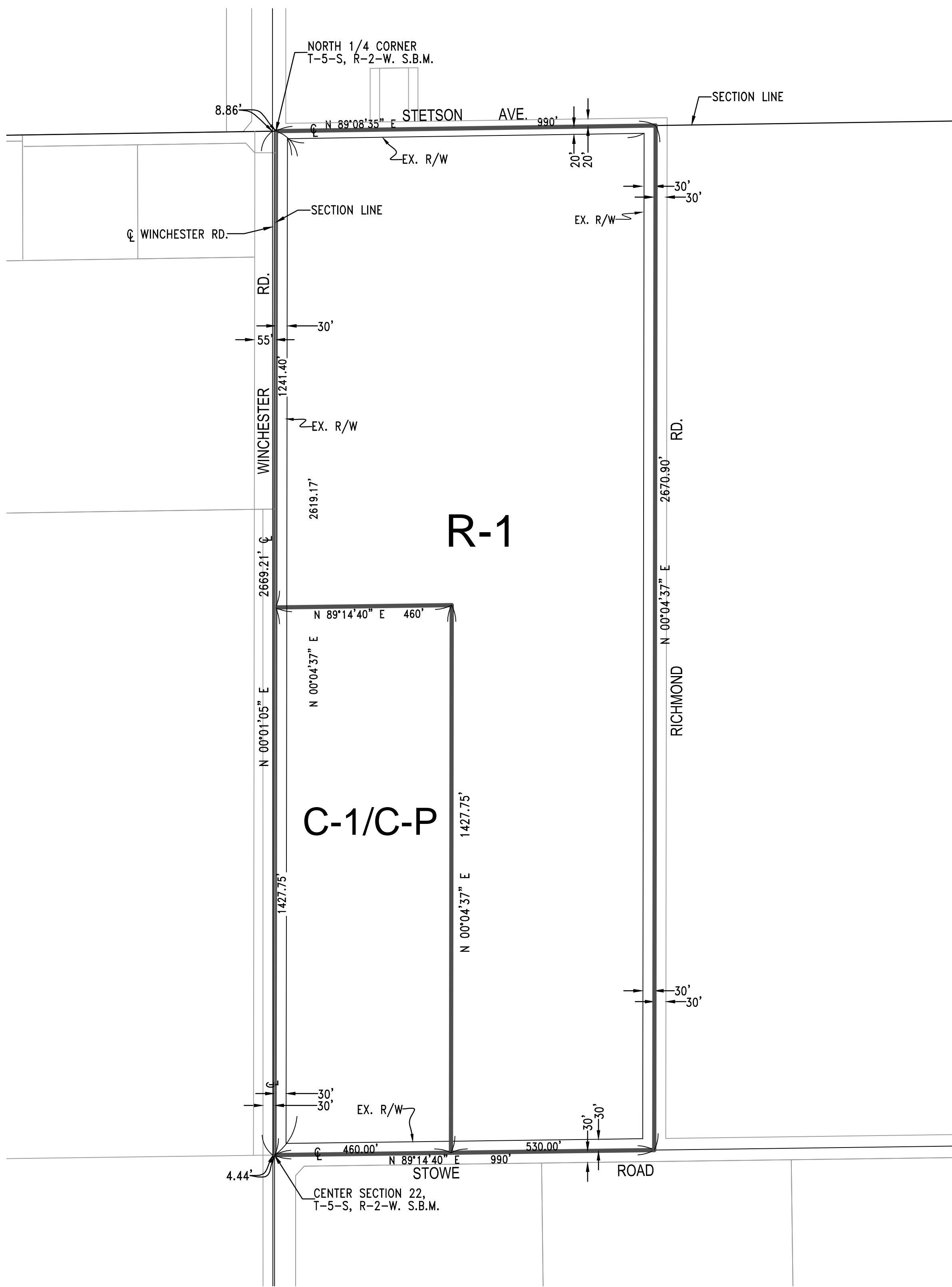


WINCHESTER AREA
SECTION 22, T 5 S, R 2 W, S.B.M.



- R-1** ONE-FAMILY DWELLINGS
C-1/C-P GENERAL COMMERCIAL

MAP NO. 2.2391
CHANGE OF OFFICIAL ZONING PLAN
CHANGE OF ZONE CASE NO. 07741
AMENDING MAP NO. 2 ORDINANCE NO. 348
ADOPTED BY ORDINANCE NO. 348.4828
MAY 3, 2016

RIVERSIDE COUNTY BOARD OF SUPERVISORS

APN NO. 465-060-004

