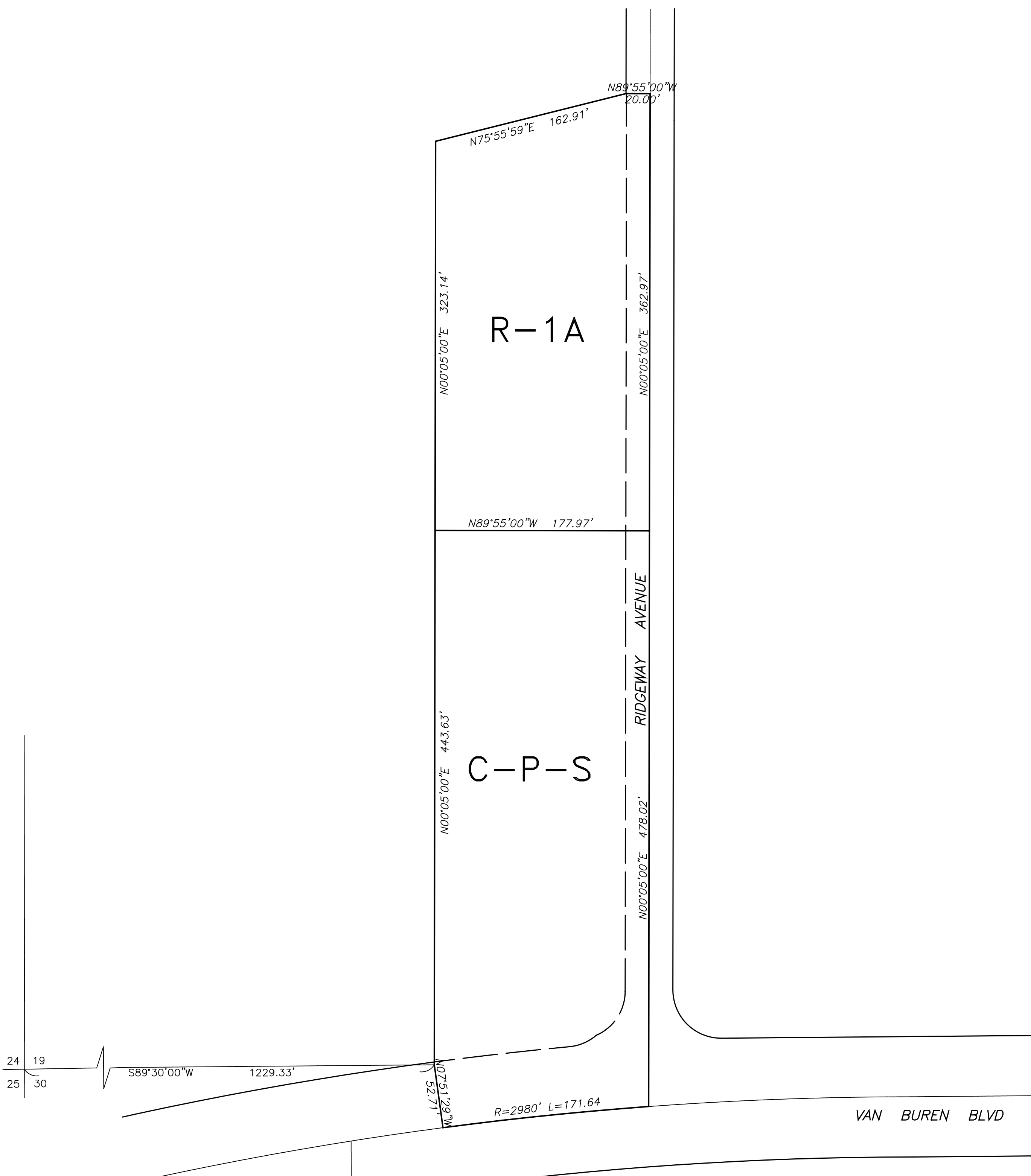


SEC. 19, T. 3S, R. 4W

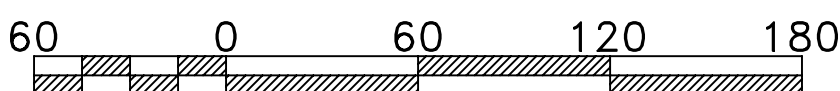
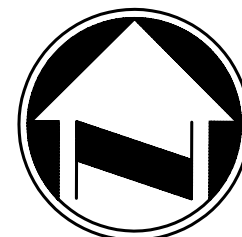


C-P-S

SCENIC HIGHWAY
COMMERCIAL

R-A-1

RESIDENTIAL AGRICULTURAL
ONE ACRE MIN.



SCALE: 1" = 60'

MAP NO.

CHANGE OF OFFICIAL ZONING PLAN
WOODCREST
DISTRICT

CHANGE OF ZONE 7706
AMMENDING ORDINANCE NO. 348
ADOPTED BY ORDINANCE NO.

DATE:

RIVERSIDE COUNTY BOARD OF SUPERVISORS