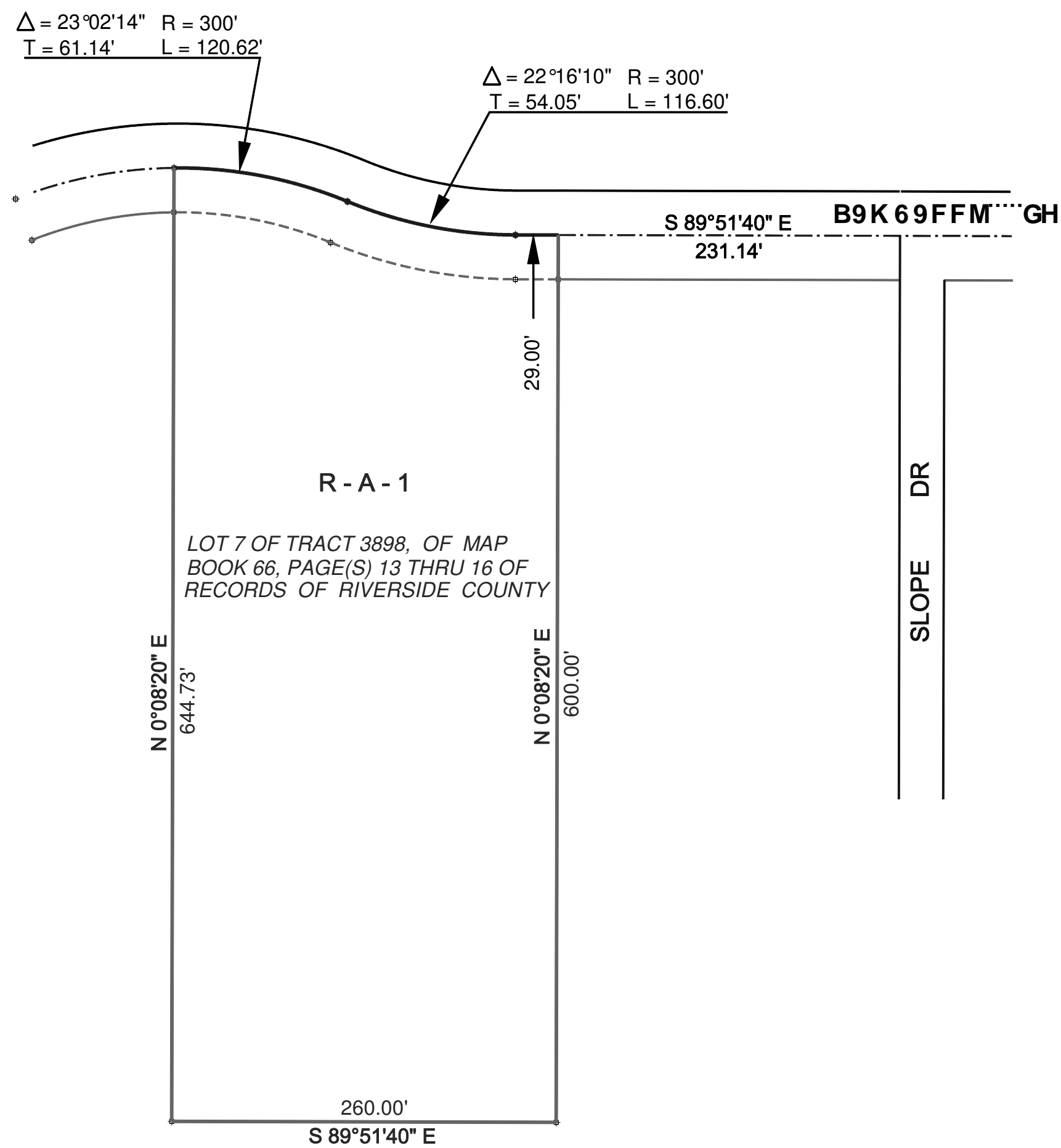


SEC. 21, T. 2 S., R. 1 W. S.B.B. & M.



LEGEND

**R-A-1** RESIDENTIAL AGRICULTURAL, 1 AC. MIN.

MAP NO.  
MAP OF OFFICIAL ZONING PLAN  
CHERRY VALLEY  
DISTRICT  
CHANGE OF ZONE CASE NO. 07680  
AMENDING ORDINANCE NO. 348  
ADOPTED BY ORDINANCE NO.

RIVERSIDE COUNTY BOARD OF SUPERVISORS

