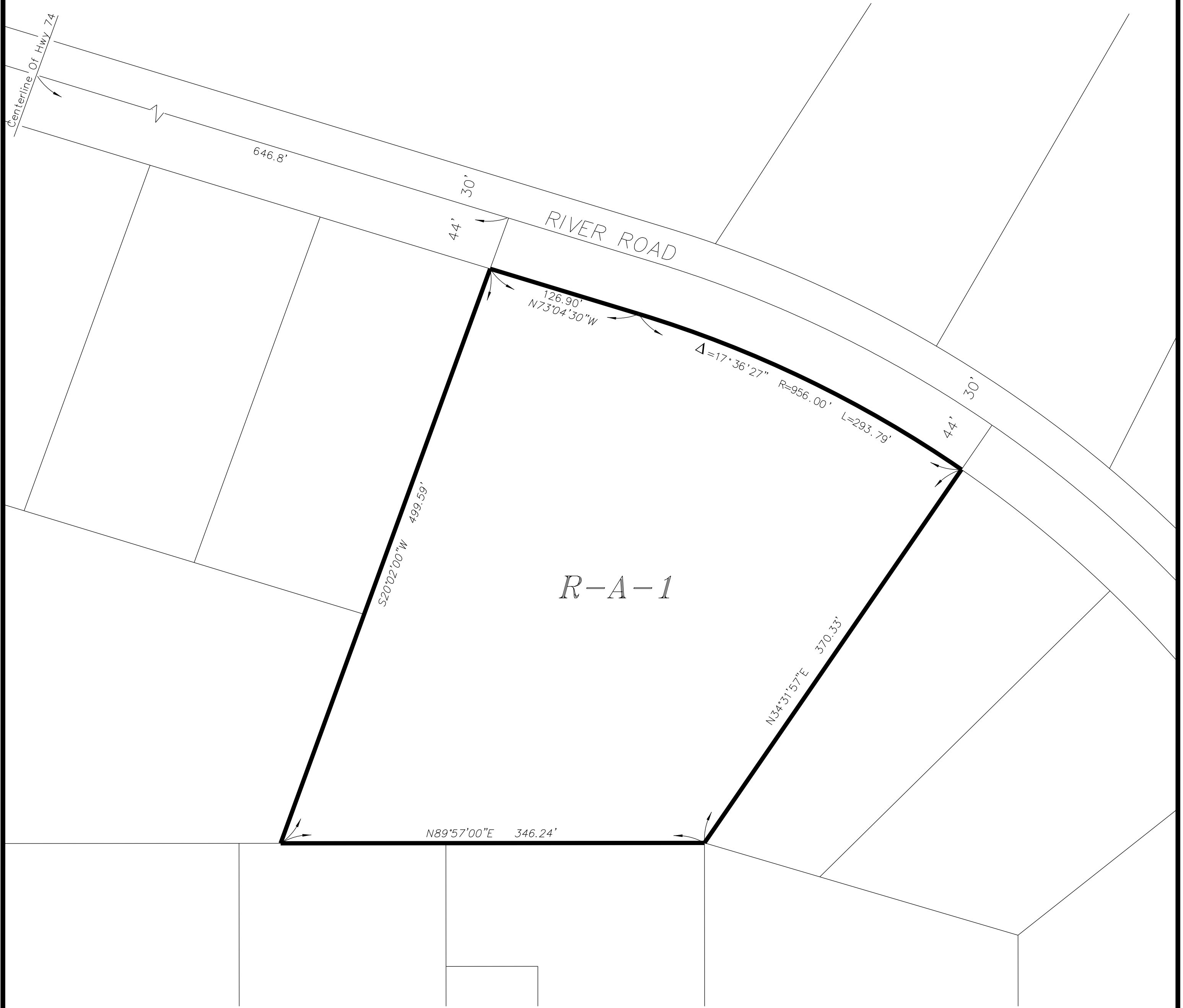
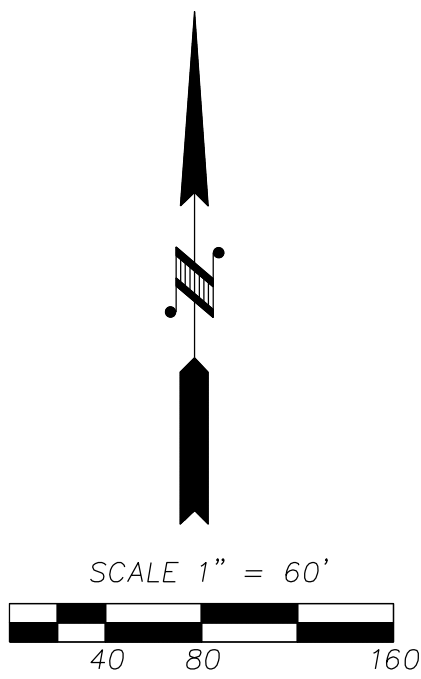


MEADOWBROOK AREA
SECTION 15, T.5S., R.4W., S.B.B. & M.



R-A-1 RESIDENTIAL AGRICULTURAL, 1 ACRE MINIMUM

MAP No. 2.2349
CHANGE OF OFFICIAL ZONING PLAN
AMENDING
MAP NO. 2 ORDINANCE NO. 348
CHANGE OF ZONE CASE NO. 7679
ADOPTED BY ORDINANCE NO. 348.4758
DATE: MAY 21, 2013



RIVERSIDE COUNTY BOARD OF SUPERVISORS