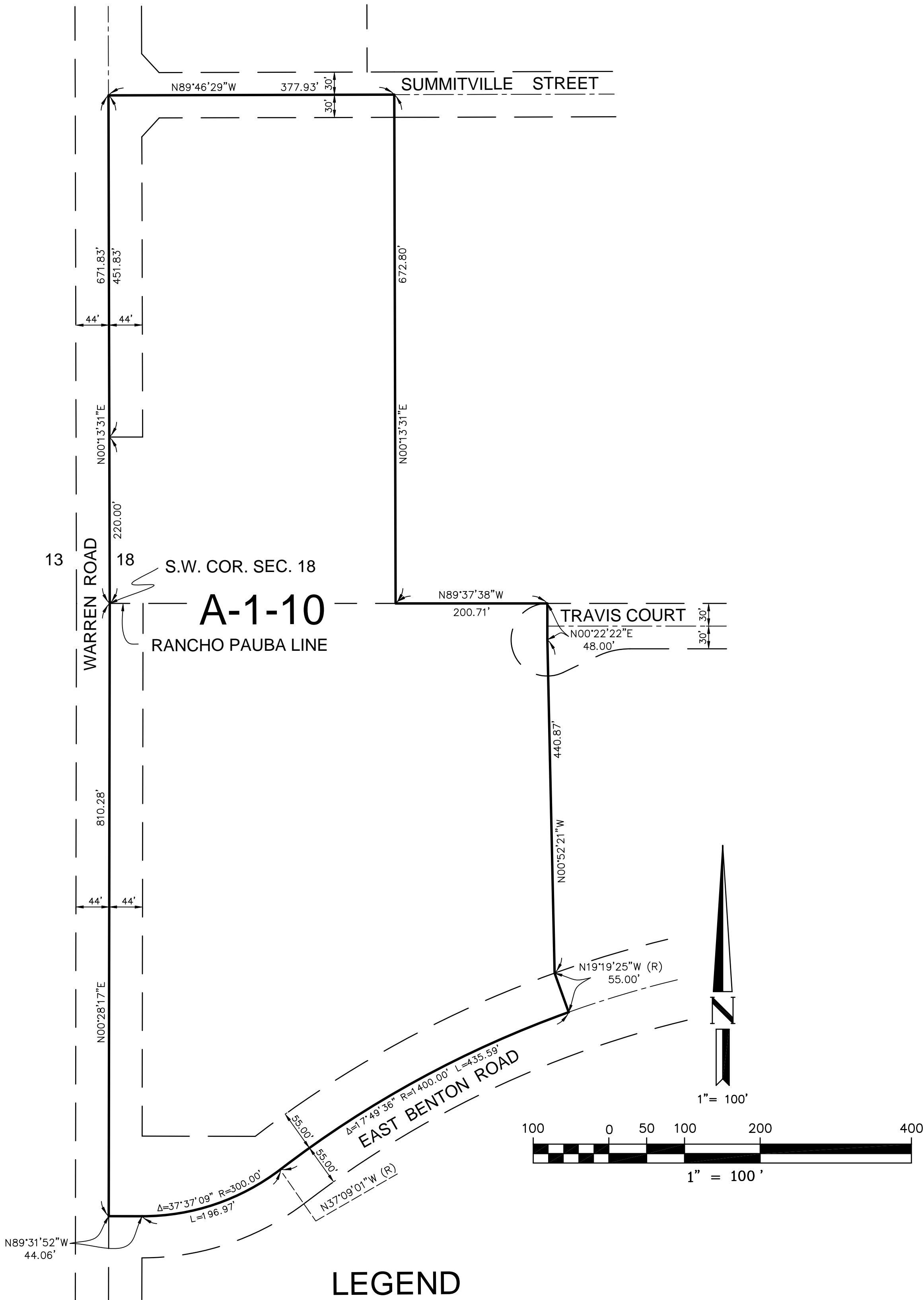


RANCHO CALIFORNIA AREA
SEC. 18, T.7 S., R.1 W., S.B.B. & M. AND.
ALSO A PORTION OF RANCHO PAUBA



LEGEND

A-1-10	LIGHT AGRICULTURE - 10 ACRE MINIMUM
---------------	--

MAP NO. 2.2284
**CHANGE OF OFFICIAL ZONING PLAN
AMENDING
MAP NO.2 ORDINANCE NO. 348**

CHANGE OF ZONE CASE NO. 7629
ADOPTED BY ORDINANCE NO. 348.4603
ON SEPTEMBER 2, 2008
RIVERSIDE COUNTY BOARD OF SUPERVISORS

ASSESSOR'S PARCEL NO.
915-690-016, 915-690-015,
924-370-017.