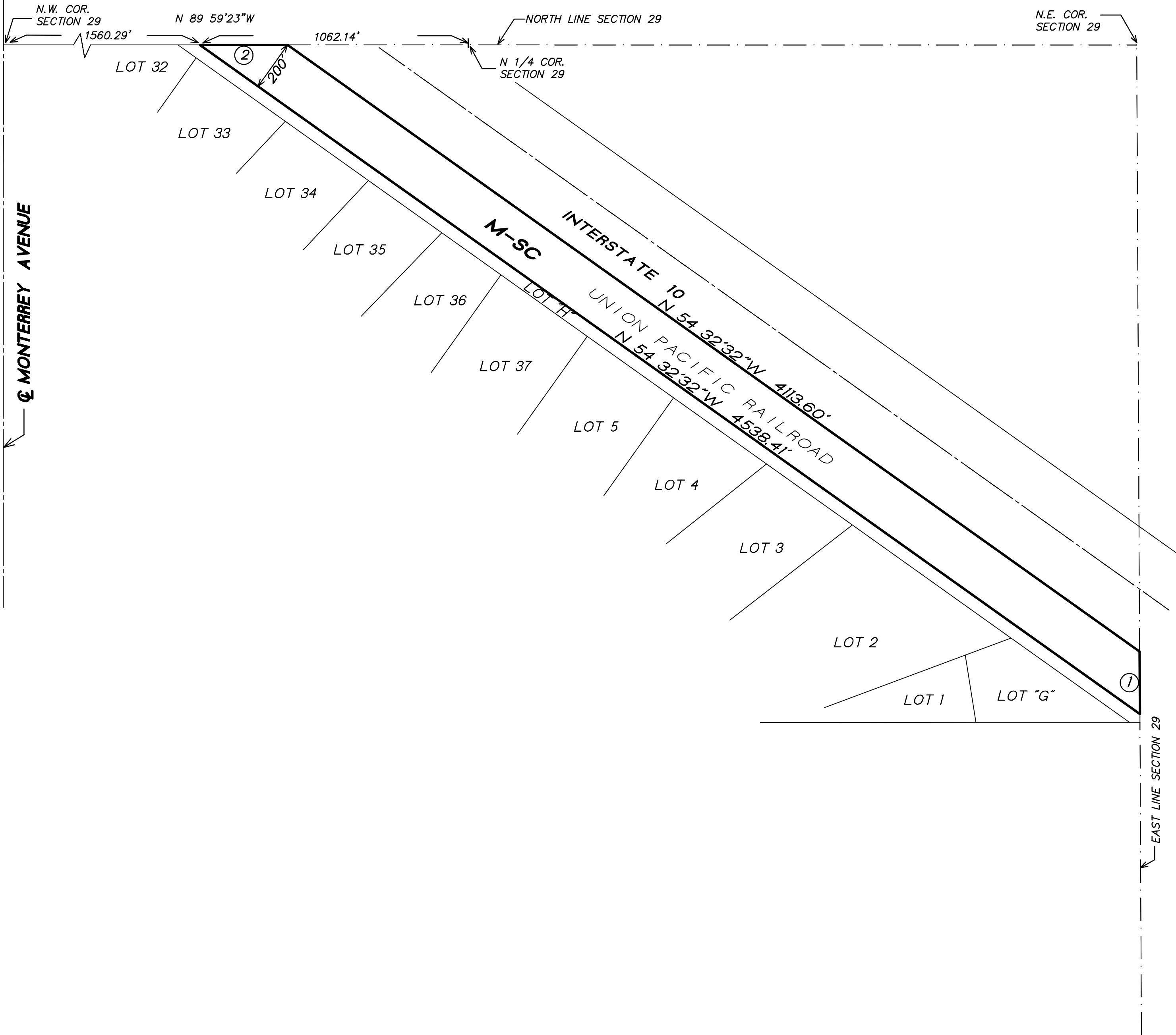


SECTION 29, T.4S., R.6E., S.B.B. & M.

LINE DATA		
○	BEARING	DISTANCE
①	N 00°16'21"W	246.37'
②	N 89°59'23"W	344.85'



LEGEND:

M-SC MANUFACTURING - SERVICE COMMERCIAL

MAP NO. 40.038
CHANGE OF OFFICIAL ZONING PLAN
**THOUSAND PALMS
DISTRICT**

CHANGE OF ZONE CASE NO. 7535
AMENDING ORDINANCE NO. 348
ADOPTED BY ORDINANCE NO. 348.4528
DATE OCTOBER 2, 2007
RIVERSIDE COUNTY BOARD OF SUPERVISORS

