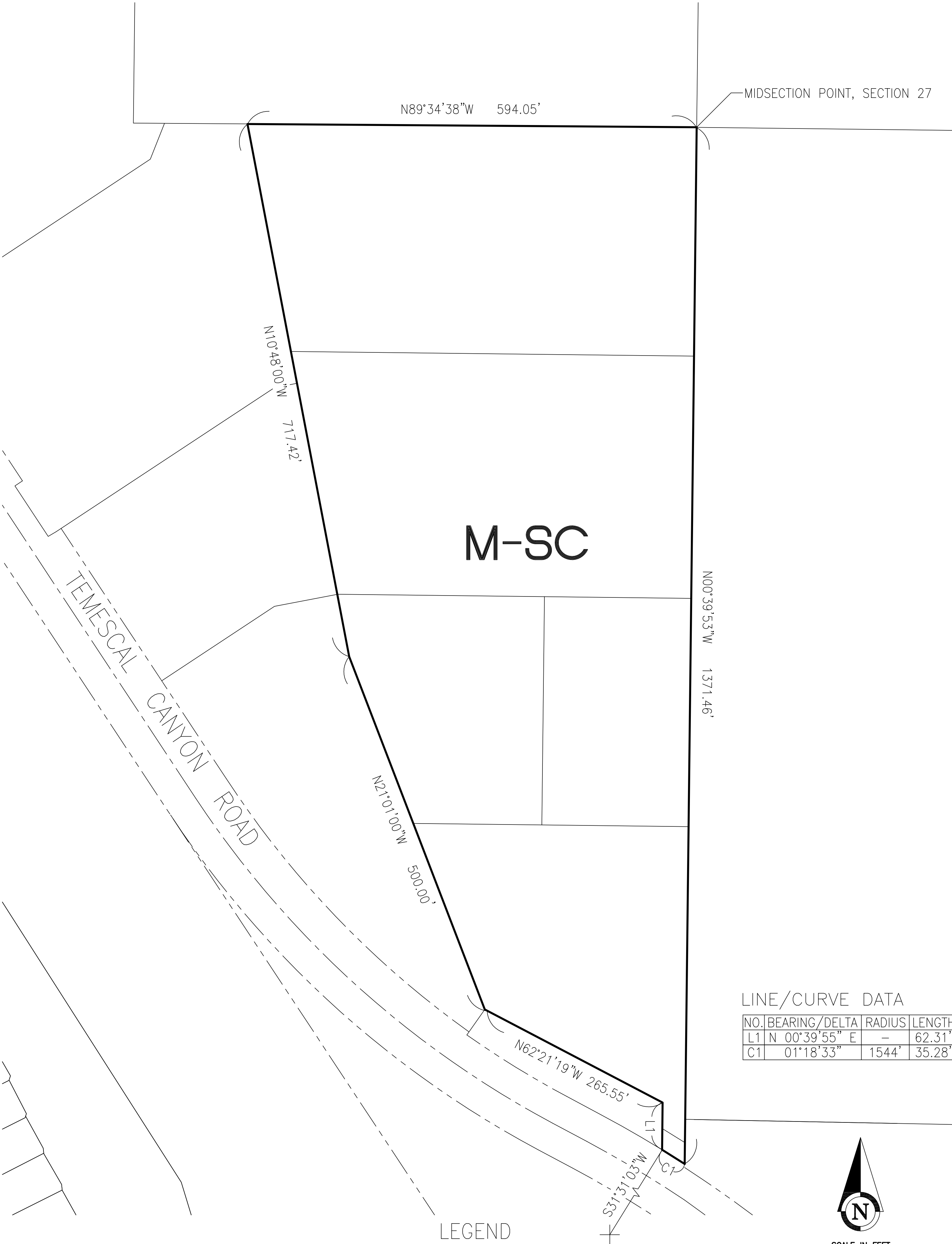


GLEN IVY

SEC. 27, T. 4S., R. 6W.



M-SC MANUFACTURING-SERVICE COMMERCIAL

MAP NO. 2.2298
CHANGE OF OFFICIAL ZONING PLAN
AMENDING

MAP NO. 2, ORDINANCE NO. 348

CHANGE OF ZONE CASE NO. CZ07516

ADOPTED BY ORDINANCE NO. 348.4627

NOVEMBER 25, 2008

RIVERSIDE COUNTY BOARD OF SUPERVISORS