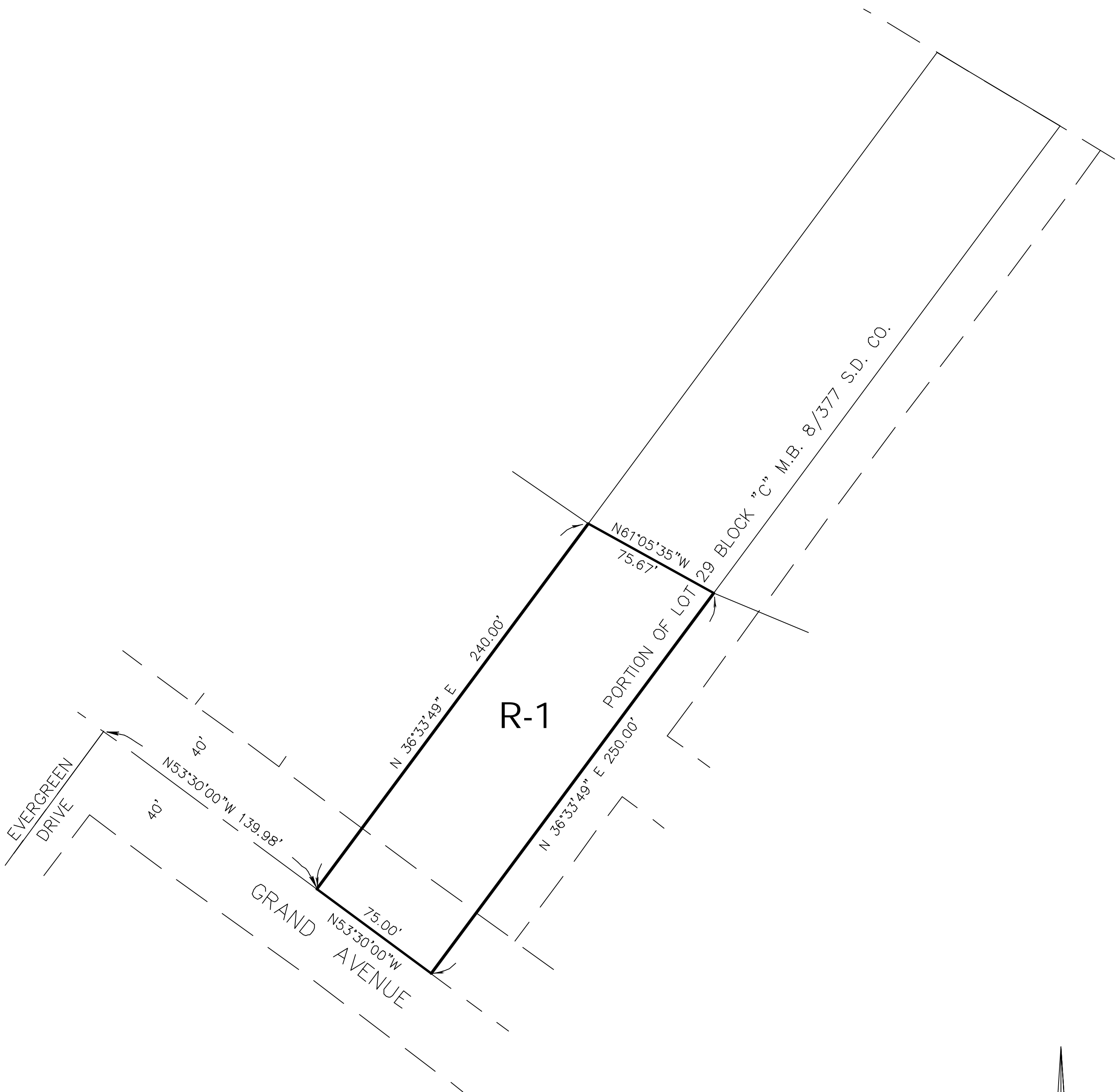


SEC. 13, T.6 S., R.5 W., S.B.B. & M.  
(PROTRACTED)



LEGEND

**R-1** ONE-FAMILY DWELLINGS

MAP NO. 27.022

CHANGE OF OFFICIAL ZONING PLAN  
LAKELAND VILLAGE  
DISTRICT

CHANGE OF ZONE CASE NO. 7417

AMENDING ORDINANCE NO. 348

ADOPTED BY ORDINANCE NO. 348.4487

APRIL 17, 2007

RIVERSIDE COUNTY BOARD OF SUPERVISORS

