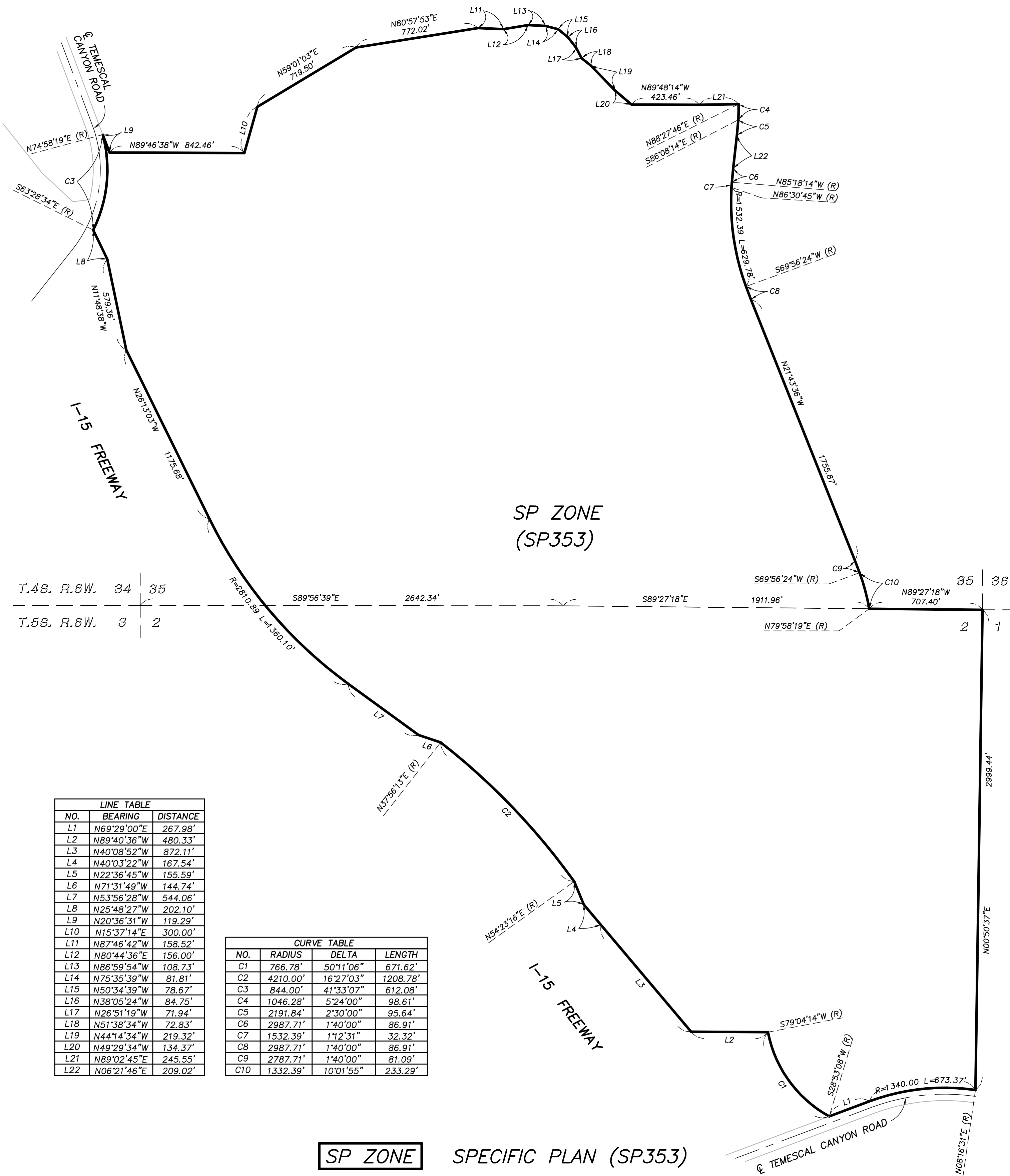


GLEN IVY AREA
PORTIONS OF SECTIONS 34 & 35, TOWNSHIP 4 SOUTH, RANGE 6 WEST, S.B.M.
AND A PORTION OF SECTION 2, TOWNSHIP 5 SOUTH, RANGE 6 WEST, S.B.M.

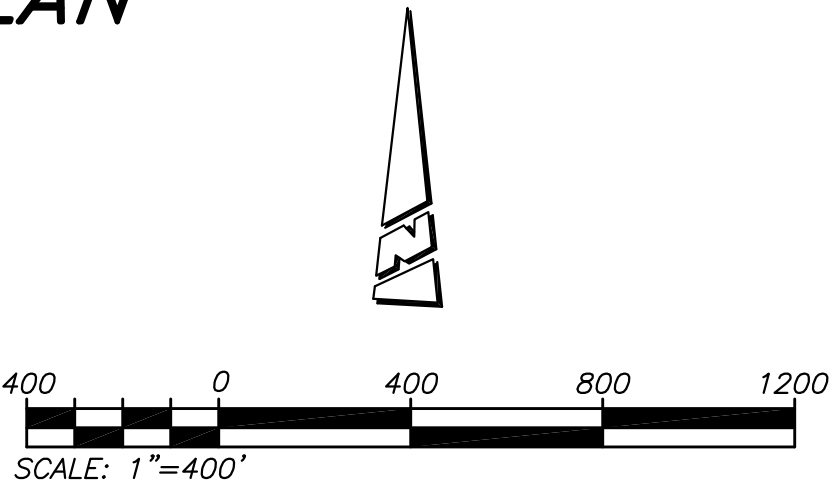


SP ZONE SPECIFIC PLAN (SP353)
MAP NO. 2.2328

CHANGE OF OFFICIAL ZONING PLAN

AMENDING
MAP NO. 2, ORDINANCE NO. 348
CHANGE OF ZONE CASE NO. 7365

ADOPTED BY ORDINANCE NO. 348.4709
DATE: SEPTEMBER 28, 2010
RIVERSIDE COUNTY BOARD OF SUPERVISORS



APN'S:
283-190-027, 283-200-010, 009, 014, 283-160-009,
280-170-015, 021, 283-190-013, 283-200-008, 290-050-013,
283-170-012, 013, 014, 290-050-002, 003, 290-060-006,
290-050-032, 290-060-016, 290-050-026 THROUGH 029,
290-050-023, 290-050-020,