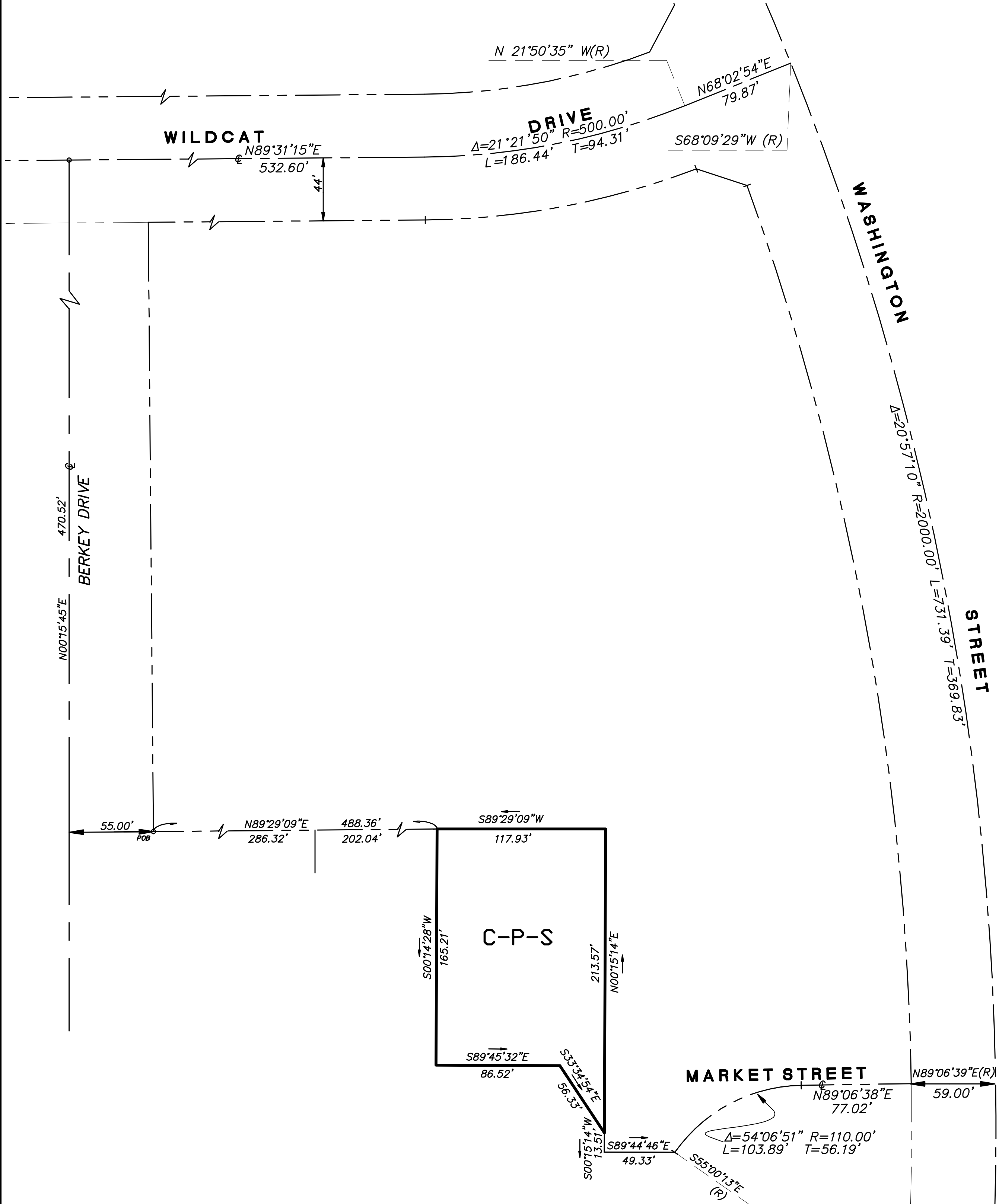


PORTION OF SECTION 6, T.5S, R.7E, SAN BERNARDINO MERIDIAN



LEGEND:

C-P-S SCENIC HIGHWAY COMMERCIAL

MAP NO. 30.090
CHANGE OF OFFICIAL ZONING PLAN
BERMUDA DUNES DISTRICT

CHANGE OF ZONE CASE NO. 7340
AMENDING ORDINANCE NO. 348
ADOPTED BY ORDINANCE NO. 348.4534
ADOPTION DATE: 10-16-07

RIVERSIDE COUNTY OF SUPERVISORS

APN: 7483700207

