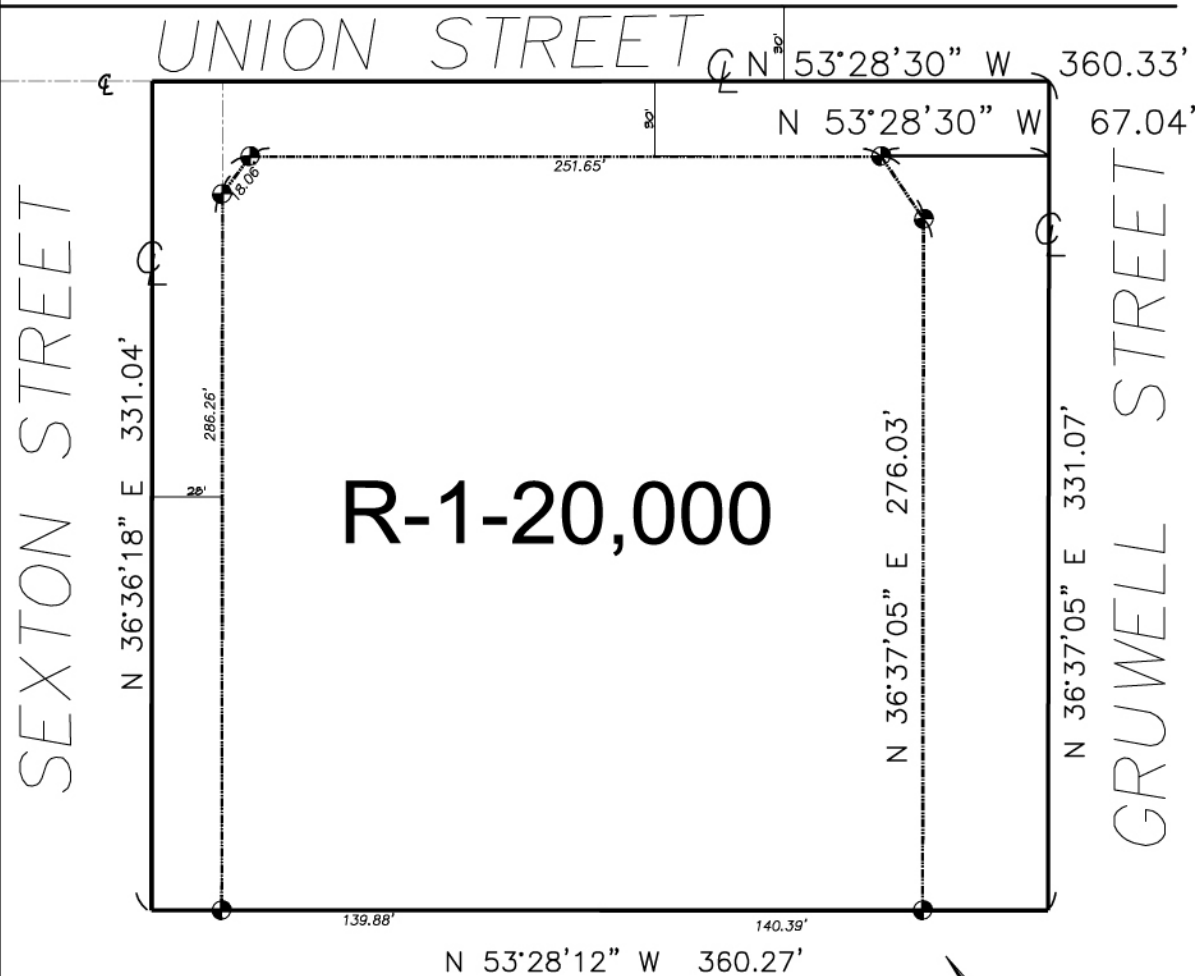


RANCHO CALIFORNIA AREA
SECTION 34, T. 6 S., R. 4 W.



CHANGE OF OFFICIAL ZONING PLAN
AMENDING

MAP NO. 2.2213, ORDINANCE NO. 348.4471
CHANGE OF ZONE CASE NO. 7329
ADOPTED BY ORDINANCE NO. 348.

DATE: February 27, 2007

RIVERSIDE COUNTY BOARD OF SUPERVISORS

ASSESSORS PARCEL NO.
368-110-014