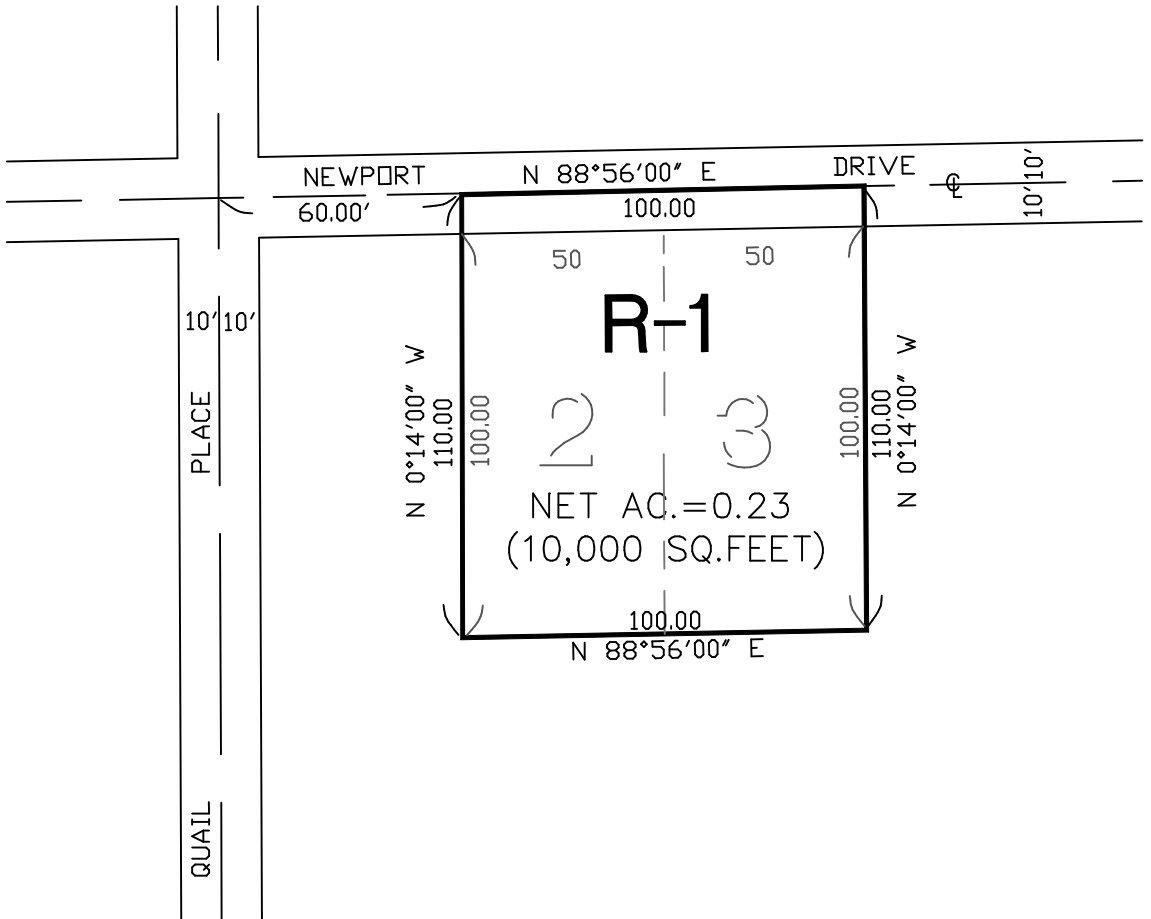


SECTION 25, T5S, R4W.

LOTS 2 & 3 OF BLOCK 8 OF LAKE ELSINORE LODGE SUBDIVISION  
No.3 AS RECORDED IN BOOK 13 PAGE 13 AND 14 ALL OF MAPS  
RECORDS OF RIVERSIDE COUNTY CALIFORNIA.



LEGEND

R-1 ONE - FAMILY DWELLINGS

MAP No. 53.009

CHANGE OF OFFICIAL ZONING PLAN

QUAIL VALLEY DISTRICT

CHANGE OF ZONING CASE NO. 7243

AMENDING ORDINANCE No. 348

ADOPTED BY ORDINANCE No. 348.4513

DATE: JUNE 26th, 2007

