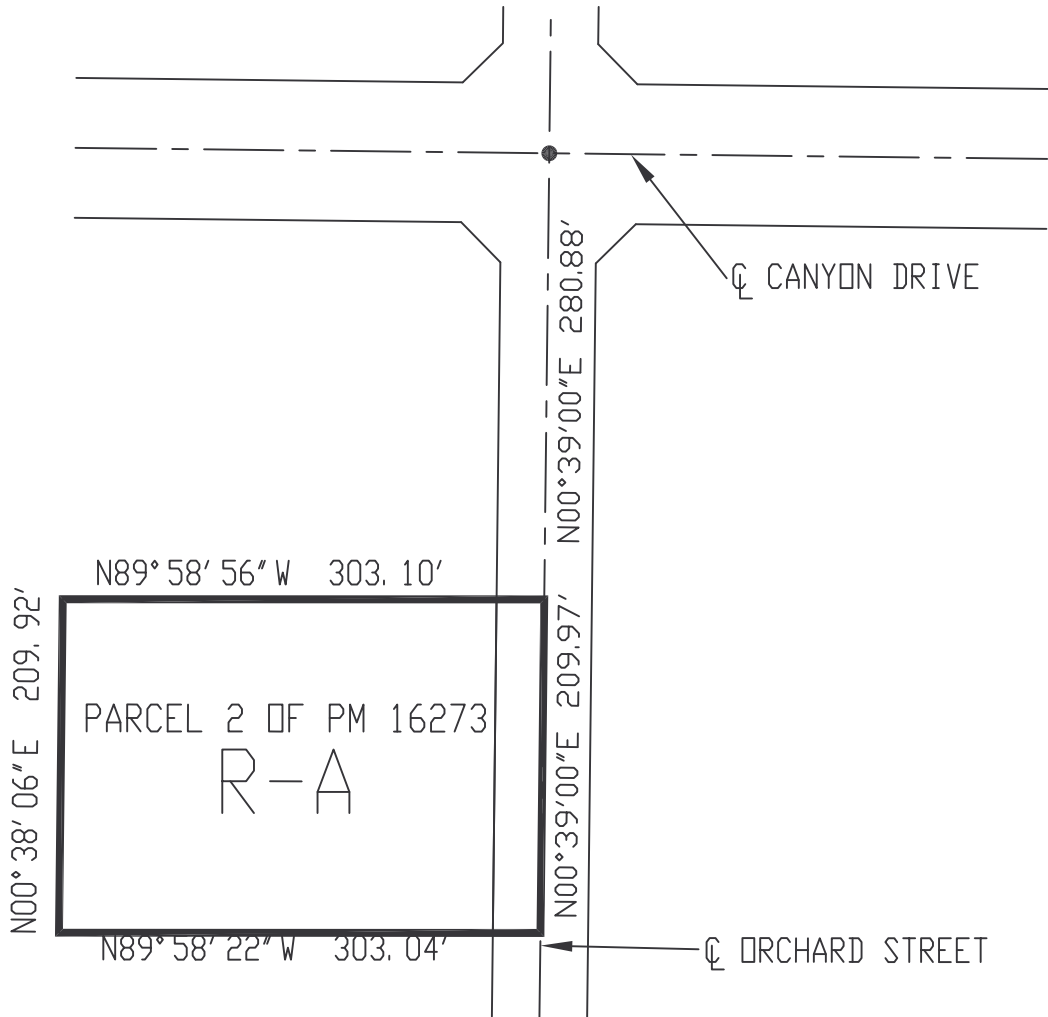


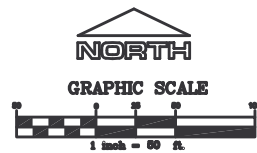
SEDCO—WILDOMAR AREA
SECTION 27, TOWNSHIP 6 SOUTH, RANGE 4 WEST, SBM.



LEGEND



RESIDENTIAL
AGRICULTURAL
ZONING



MAP NO. 2.2197
CHANGE OF OFFICIAL ZONING PLAN 7176
AMENDING
MAP NO. 2, ORDINANCE NO. 348

CHANGE OF ZONE CASE NO. 07176

ADOPTED BY ORDINANCE NO 348.4441

NOVEMBER 21, 2006

RIVERSIDE COUNTY BOARD OF SUPERVISORS