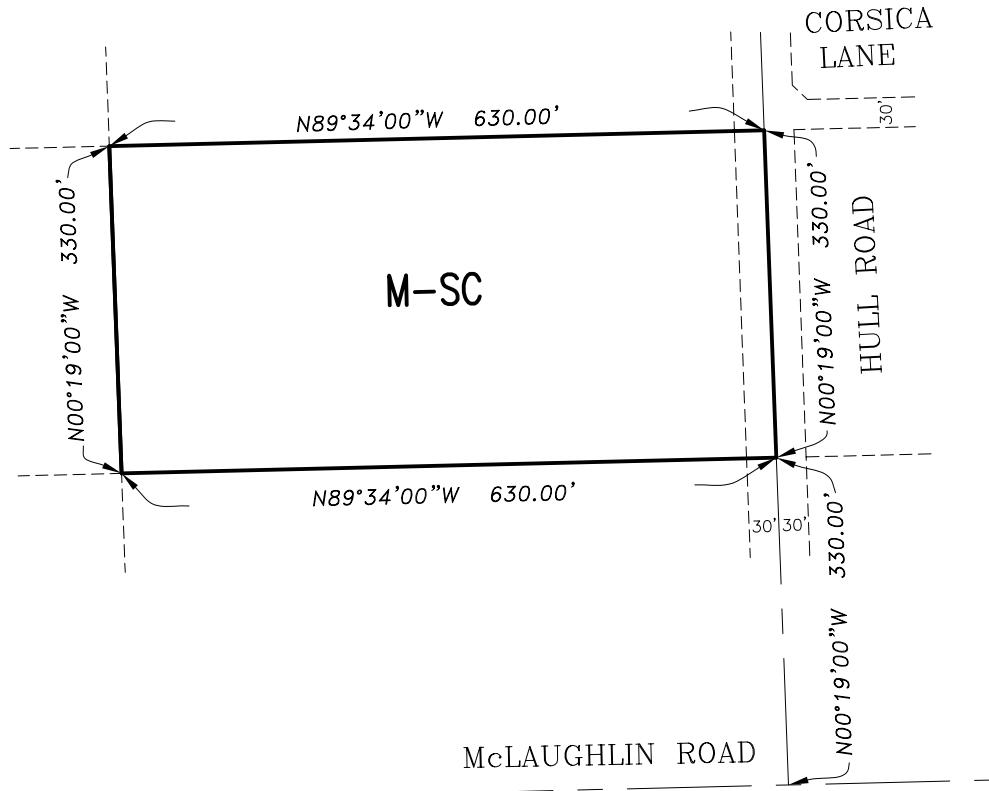


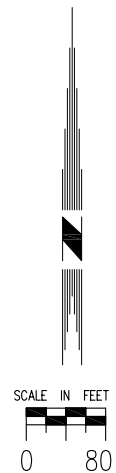
ROMOLAND AREA
SEC. 16, T. 5 S., R. 3 W. S.B.B. & M



LEGEND:

M-SC

MANUFACTURING-SERVICE COMMERCIAL



MAP NO. 2.2160
CHANGE OF OFFICIAL ZONING PLAN
AMENDING
MAP NO. 2 ORDINANCE NO. 348
CHANGE OF ZONE CASE NO. 7175
AMENDING ORDINANCE NO. 348
ADOPTED BY ORDINANCE NO. 348.4372
MARCH 7, 2006