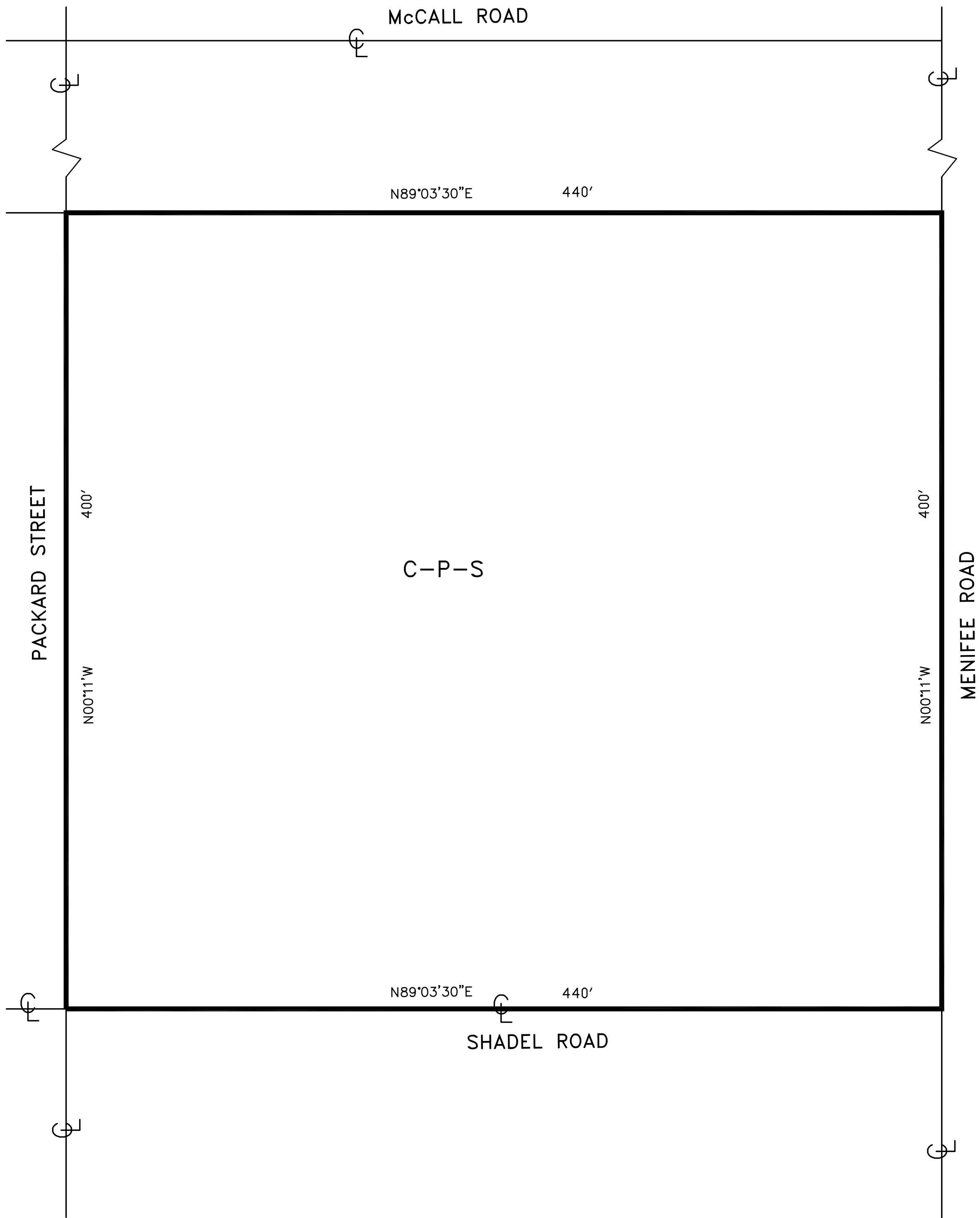


SECTION 23, TOWNSHIP 5 SOUTH, RANGE 3 WEST



C-P-S

SCENIC HIGHWAY COMMERCIAL

MAP NO. 46.085
CHANGE OF OFFICIAL ZONING PLAN
SUN CITY DISTRICT
CHANGE OF ZONE CASE NO. 7163
AMENDING ORDINANCE NO. 348
ADOPTED BY ORDINANCE NO. 348.
OCTOBER 31, 2006
RIVERSIDE COUNTY BOARD OF SUPERVISORS

