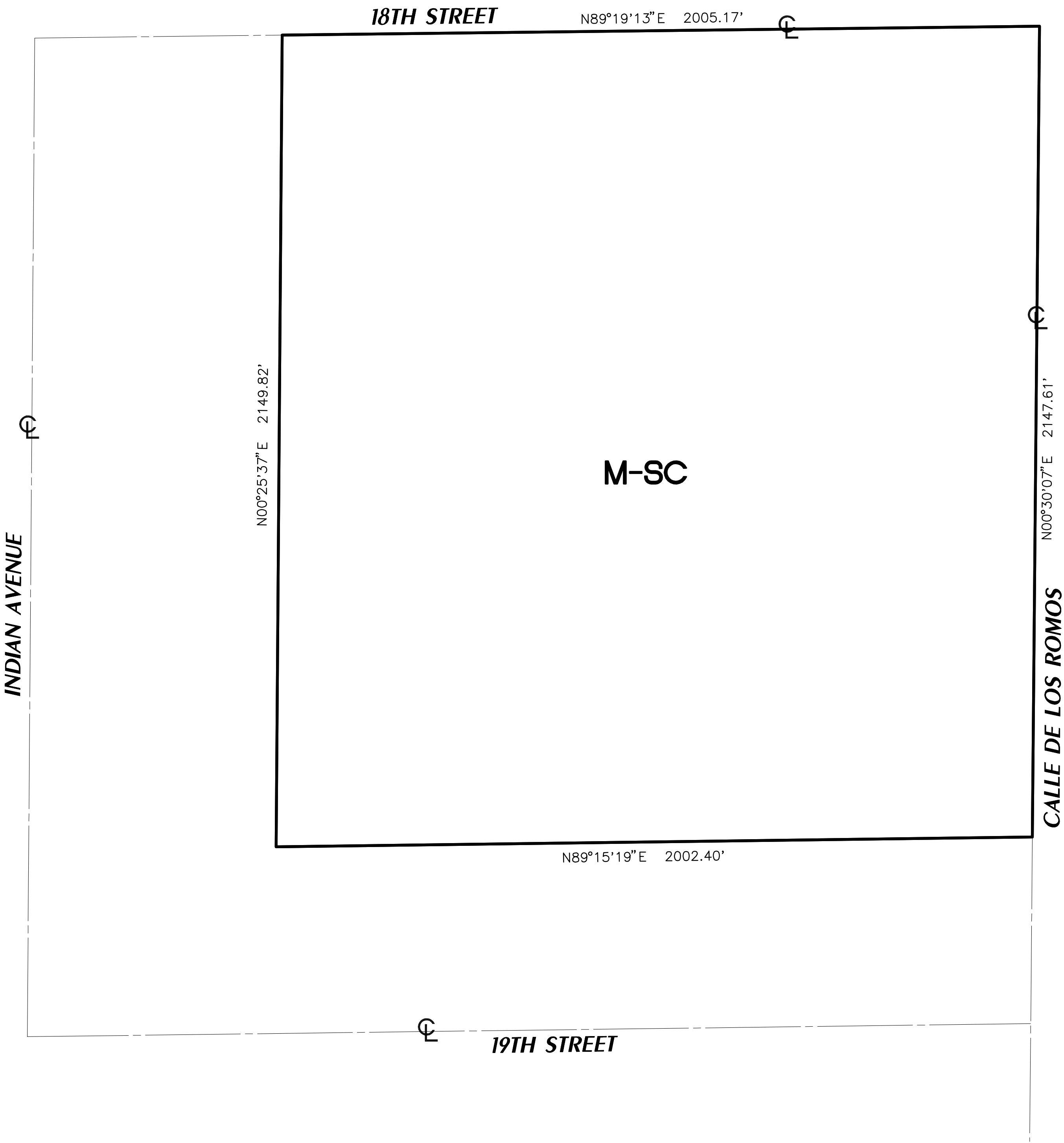
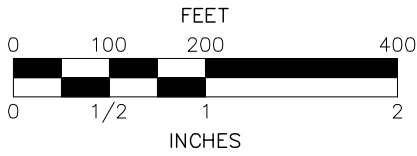


SECTION 14, T.3S., R.4E., S.B.M.



LEGEND

M-SC MANUFACTURING—SERVICE COMMERCIAL



MAP NO. 58.089
CHANGE OF OFFICIAL ZONING PLAN
PASS AND DESERT DISTRICT
CHANGE OF ZONE CASE NO. 7106
AMENDING ORDINANCE NO. 348
ADOPTED BY ORDINANCE NO. 348.4354
JANUARY 24, 2006
RIVERSIDE COUNTY BOARD OF SUPERVISORS