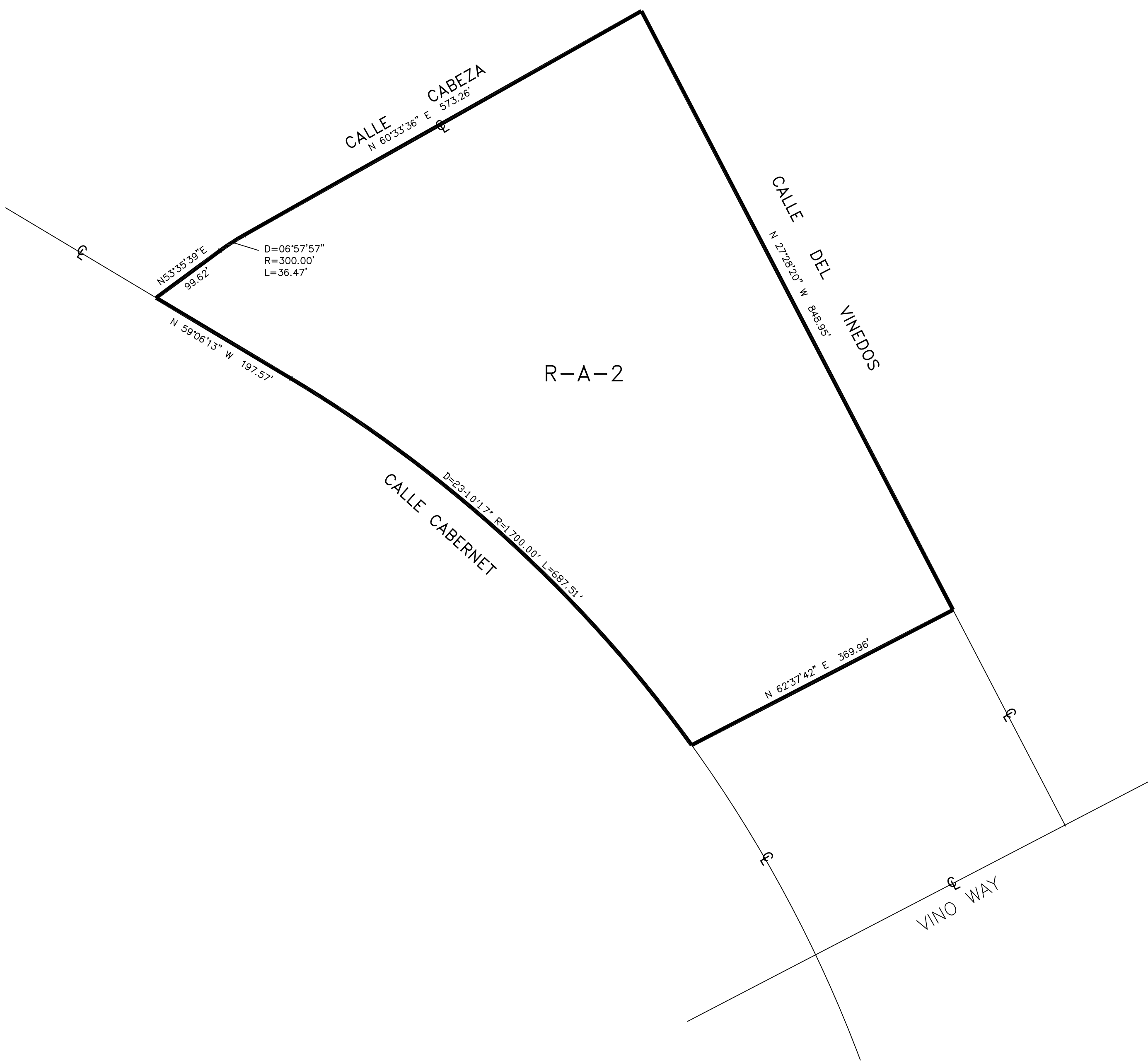


RANCHO CALIFORNIA AREA
A PORTION OF SECTION 22
TOWNSHIP 7 SOUTH, RANGE 2 WEST



LEGEND
R-A-2 RESIDENTIAL AGRICULTURE - 2 AC. MINIMUM

MAP NO. 2.2180
CHANGE OF OFFICIAL ZONING PLAN
AMENDING
MAP NO. 2, ORDINANCE NO. 348
CHANGE OF ZONE CASE NO. 7092
ADOPTED BY ORDINANCE NO. 348.4418
OCTOBER 17, 2006
RIVERSIDE COUNTY BOARD OF SUPERVISORS

