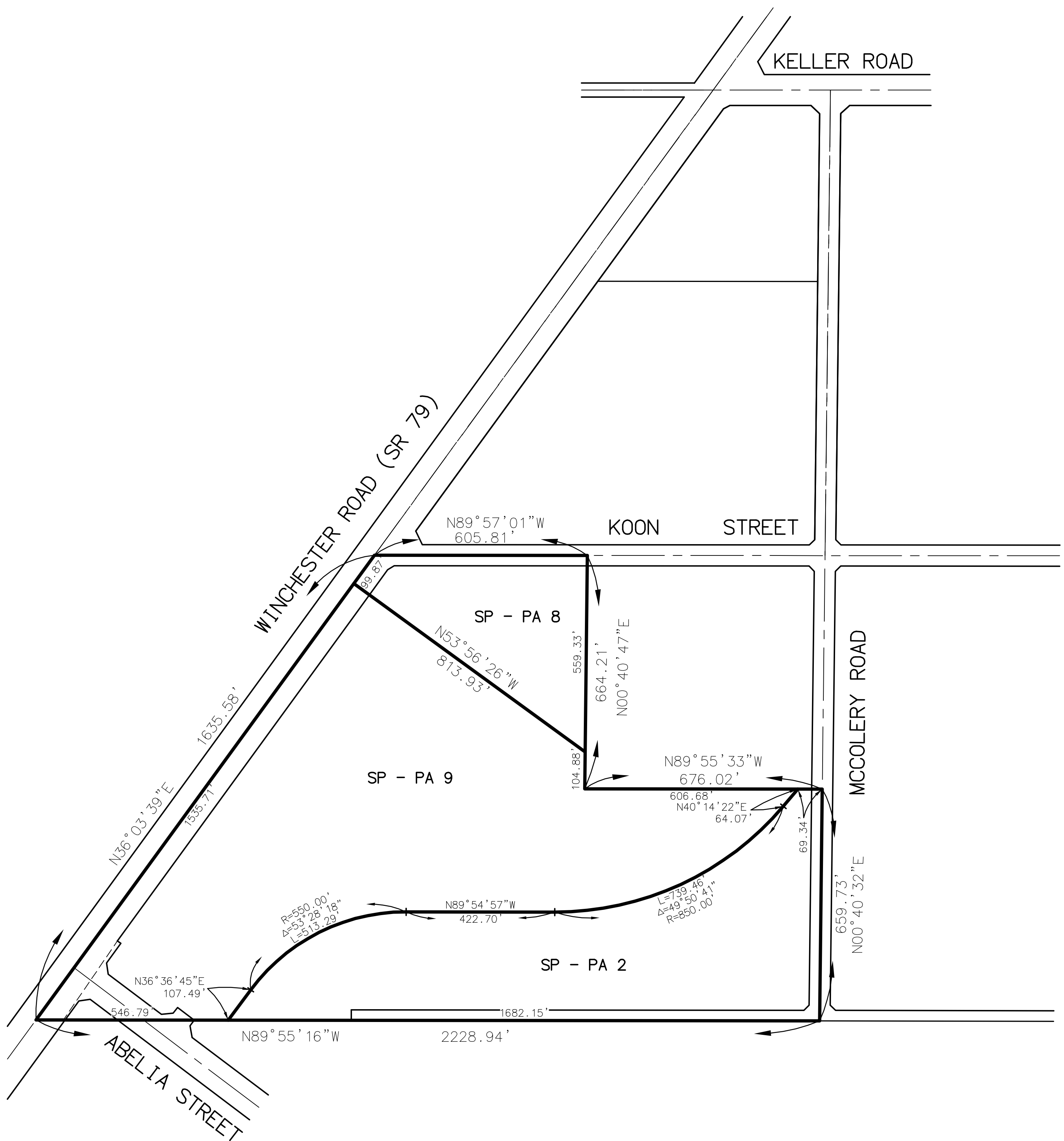


WINCHESTER AREA
SECTION 28, T.6S, R.2W, S.B.M.



LEGEND

SP ZONE

SPECIFIC PLAN (286A5)

MAP NO. 2.2237

CHANGE OF OFFICIAL ZONING PLAN AMENDING

MAP NO. 2 ORDINANCE NO. 348

CHANGE OF ZONE CASE NO. 7086
ADOPTED BY ORDINANCE NO. 348.4506

JUNE 5, 2007

RIVERSIDE COUNTY BOARD OF SUPERVISORS

