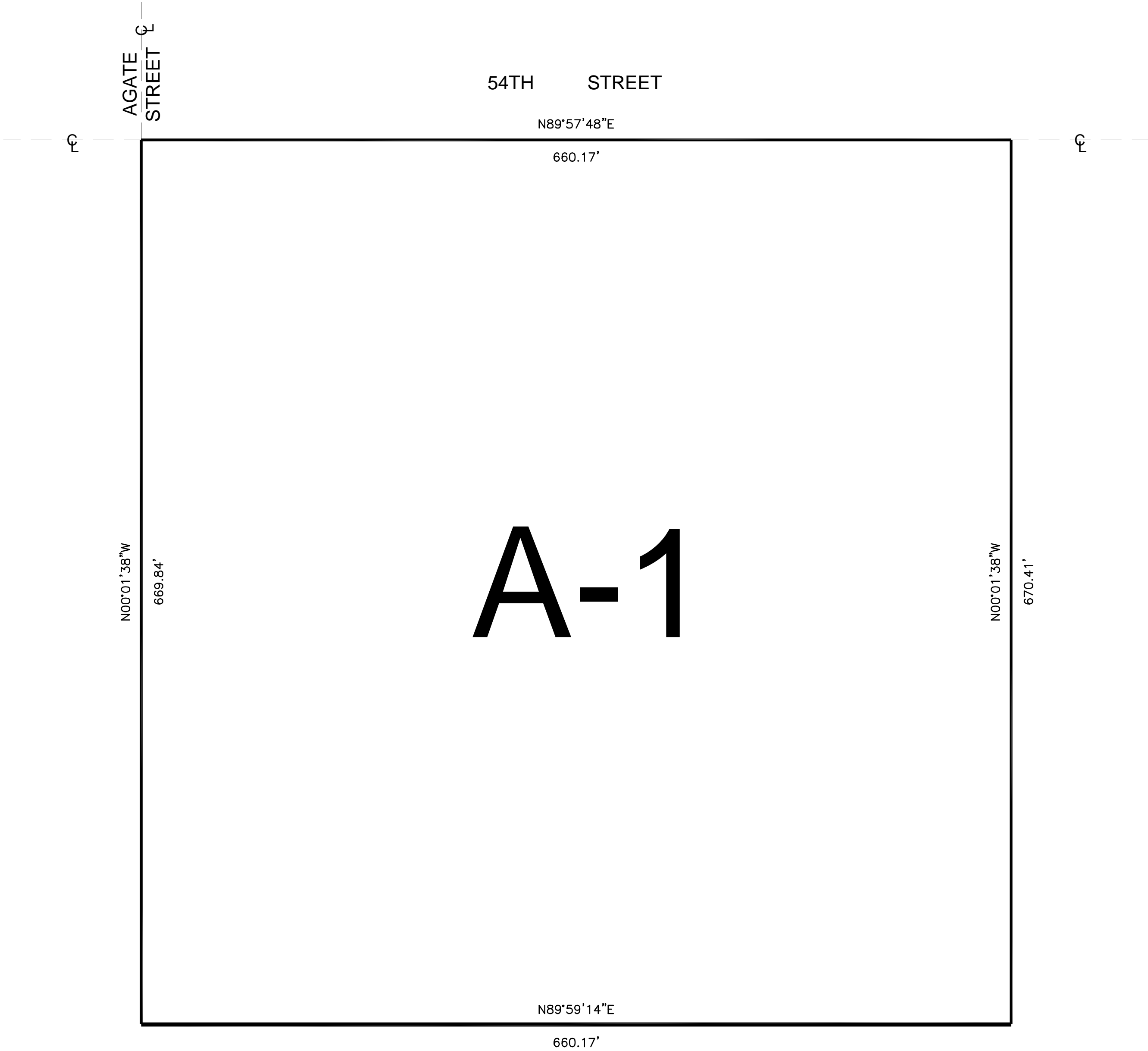


SEC. 24, T.2S., R. 6W. S. B. B. & M.



LEGEND

A-1

LIGHT AGRICULTURE

MAP NO. 39.040

CHANGE OF OFFICIAL ZONING PLAN
PEDLEY
DISTRICT

CHANGE OF ZONE CASE NO. 7068

AMENDING ORDINANCE NO. 348

ADOPTED BY ORDINANCE NO. 348.4530

RIVERSIDE COUNTY BOARD OF SUPERVISORS

