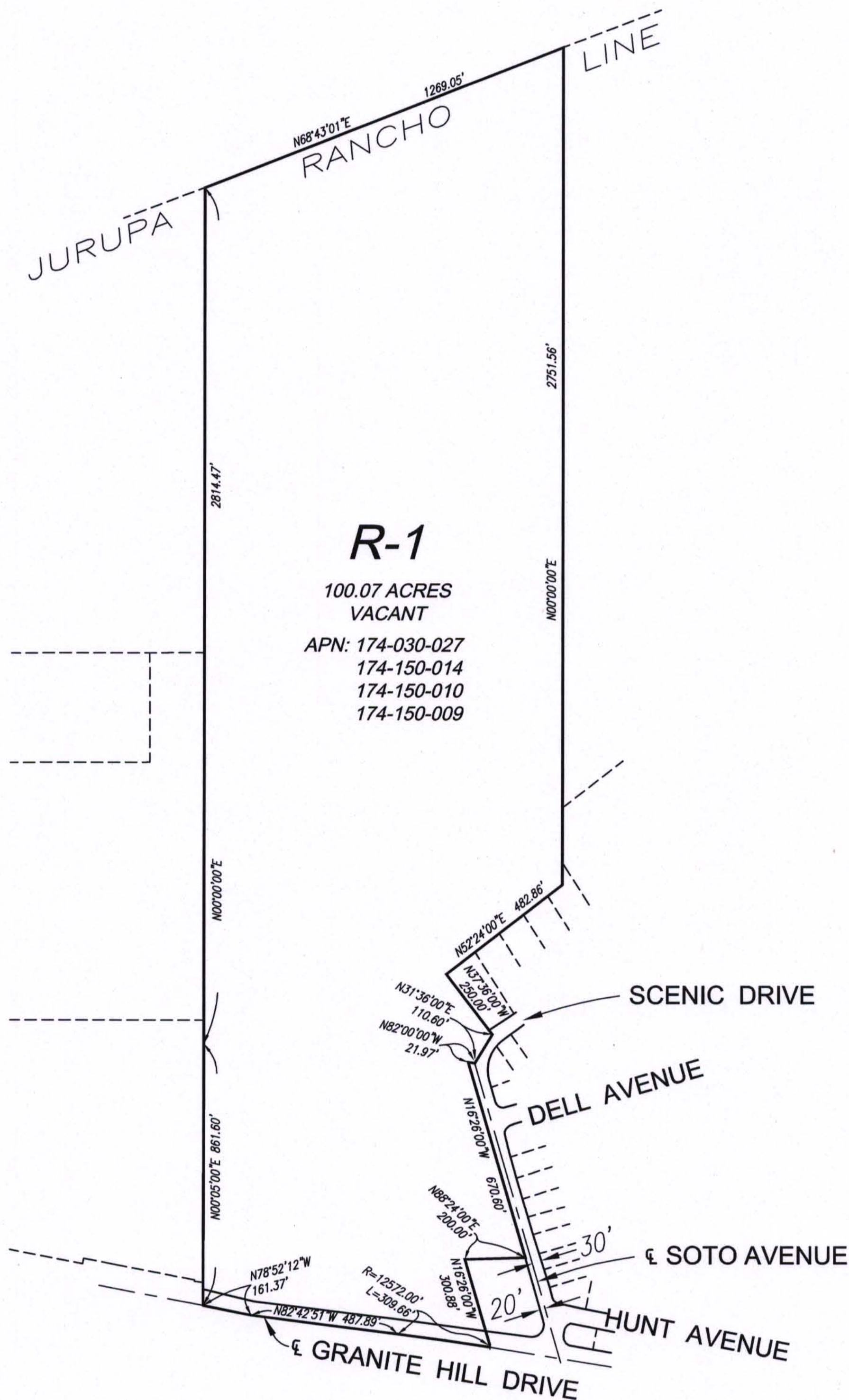


SECTIONS 6 AND 7, T.2S. R.5W.



LEGEND

**R - 1** ONE-FAMILY DWELLINGS

MAP NO. 15.049  
**CHANGE OF OFFICIAL ZONING PLAN**  
AMENDING  
**MAP NO. 2, ORDINANCE NO 348**  
CHANGE OF ZONE CASE NO. 7037  
ADOPTED BY ORDINANCE NO. 348.4498  
DATED: MAY 15, 2007  
RIVERSIDE COUNTY BOARD OF SUPERVISORS

