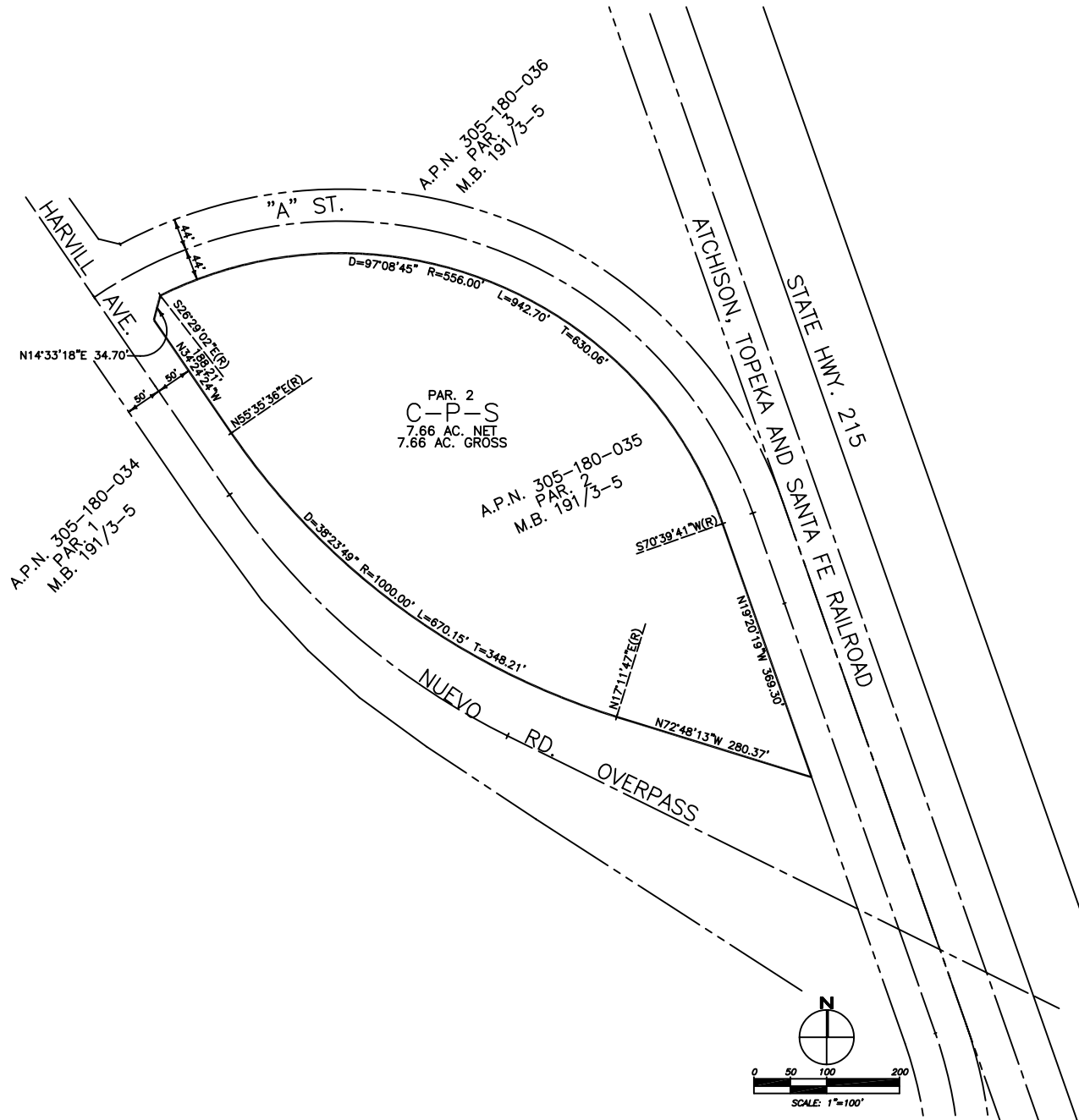


NORTH PERRIS AREA
SECTION 19, T.4S., R.3W., S.B.M.



LEGEND

C-P-S SCENIC HIGHWAY COMMERCIAL

MAP NO. 2.2128
CHANGE OF OFFICIAL ZONE PLAN
AMENDING
MAP NO. 2, ORDINANCE NO. 348

CHANGE OF ZONE CASE NO. 7033
ADOPTED BY ORDINANCE NO. 348.4289
APRIL 19, 2005
RIVERSIDE COUNTY BOARD OF SUPERVISORS

A.P.N. 305-180-035