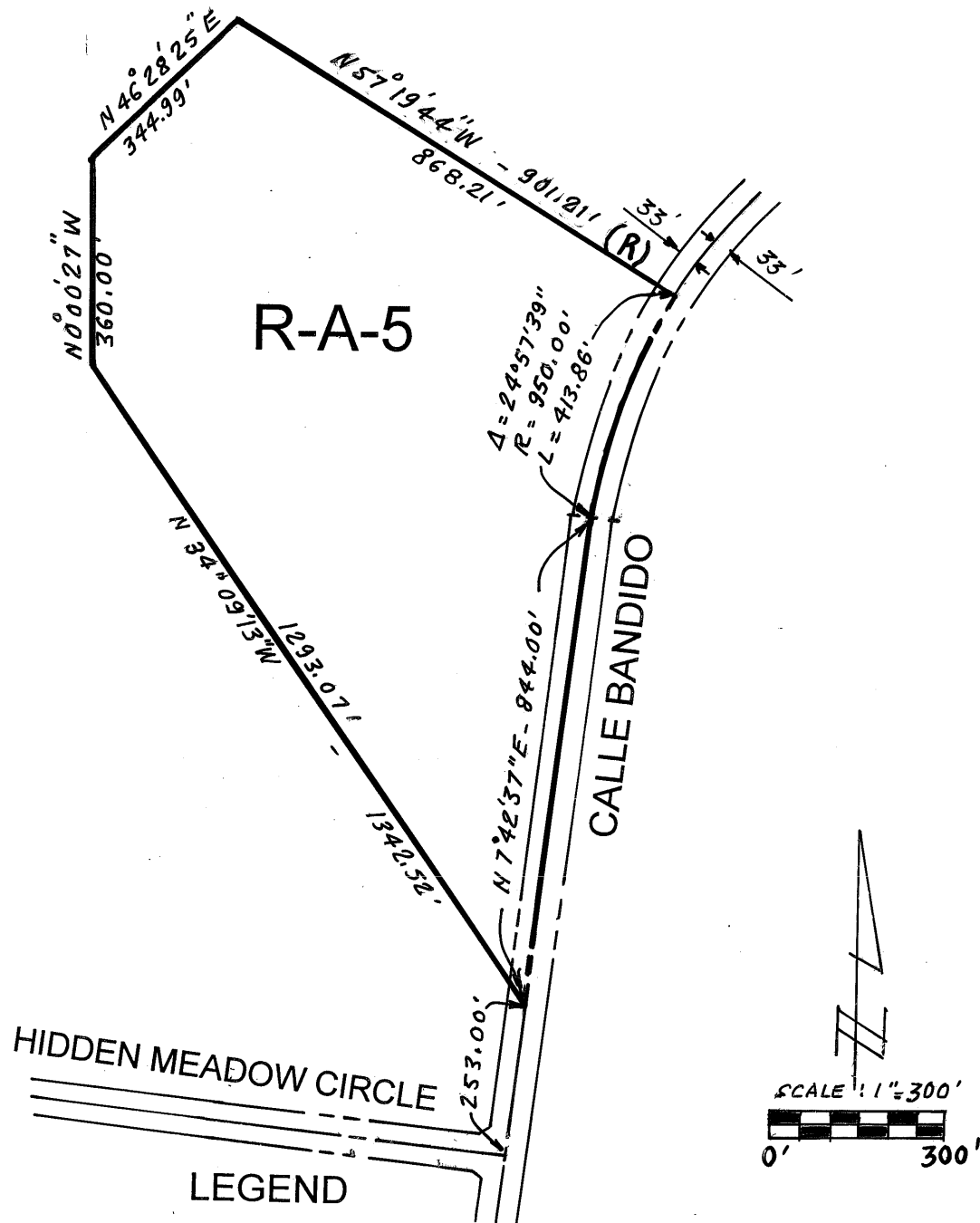


RANCHO CALIFORNIA AREA
SEC. 17, 18, 19, 20 T.7S. R4W



R-A-5

RESIDENTIAL AGRICULTURAL, 5 AC. MIN.

MAP NO. **2.2140**

CHANGE OF OFFICIAL ZONING PLAN

AMENDING

MAP NO. 2, ORDINANCE NO. 348. **4333**

CHANGE OF ZONE CASE NO. 6886

ADOPTED BY ORDINANCE NO. 348.

NOVEMBER 8, 05