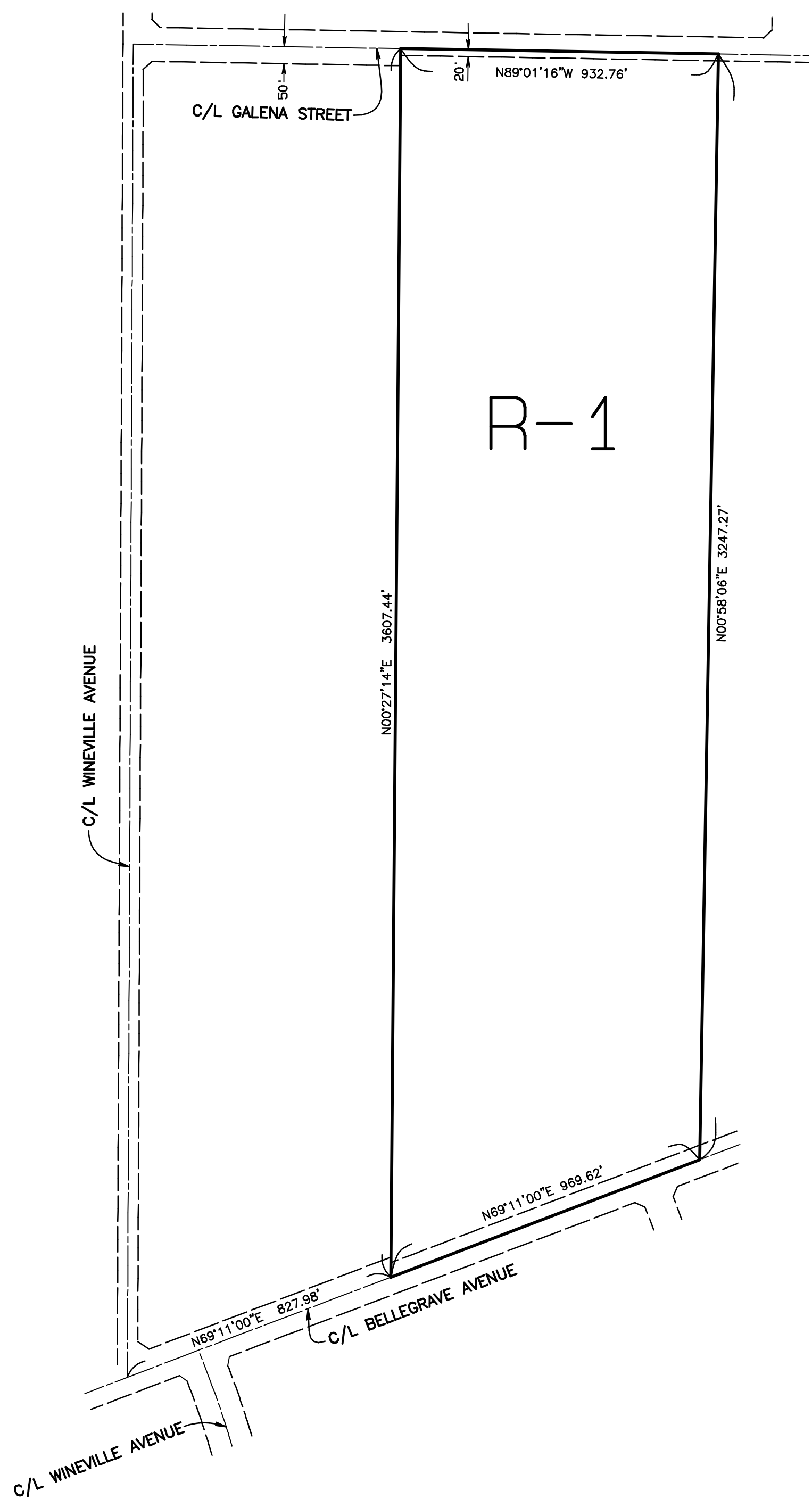


SEC. 17 & 18, T.2S., R.6W. S.B.M.



LEGEND

R-1

ONE - FAMILY DWELLINGS

MAP NO. 38.125
CHANGE OF OFFICIAL ZONING PLAN
PRADO - MIRA LOMA
DISTRICT

CHANGE OF ZONE CASE NO. 06885
AMENDING ORDINANCE NO. 348
ADOPTED BY ORDINANCE NO. 348.4379
ADOPTION DATE: MARCH 21, 2006
RIVERSIDE COUNTY BOARD OF SUPERVISORS



SCALE IN FEET
0 300