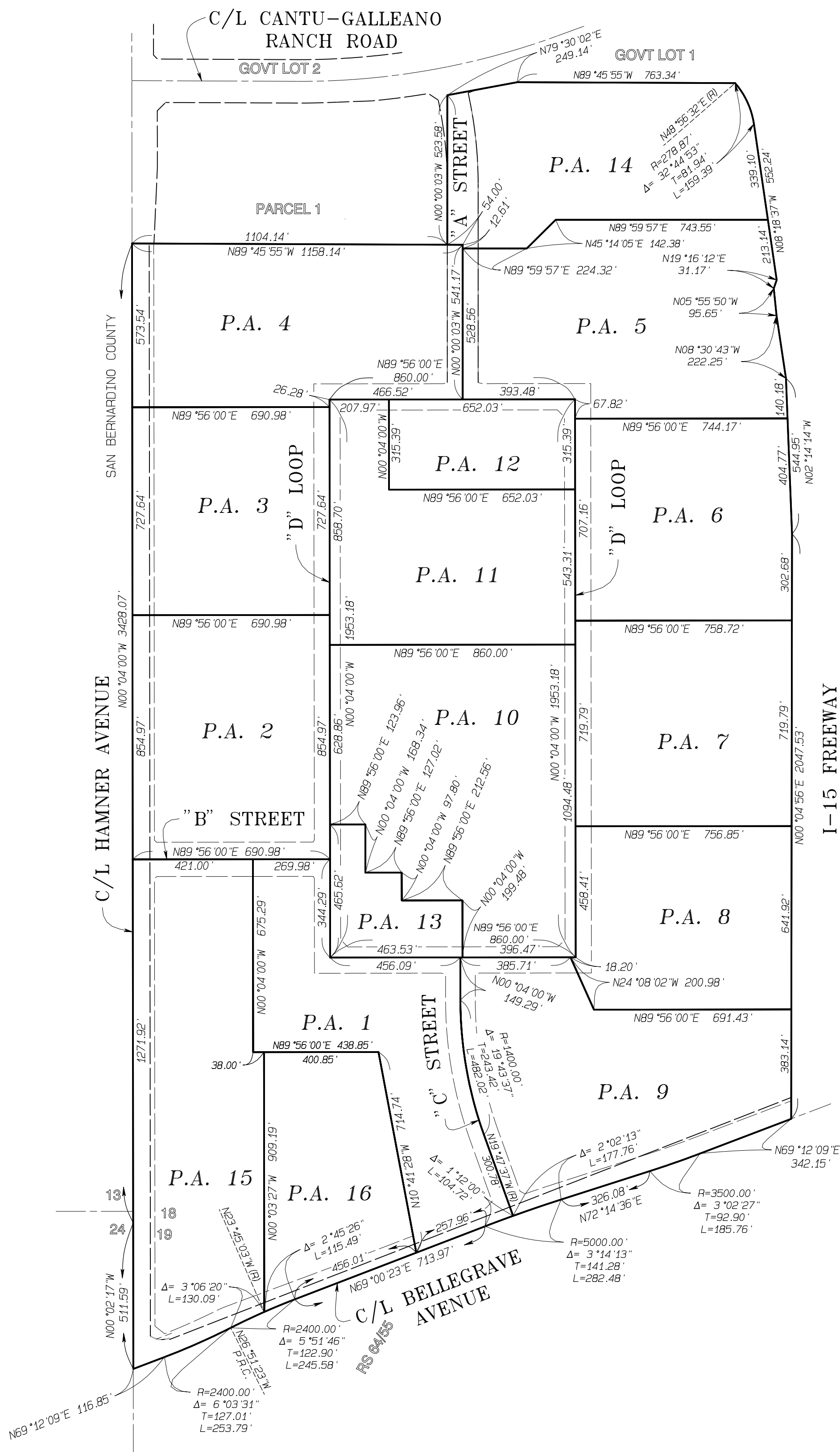


SECTIONS 18 AND 19, T.2S., R.6W. S.B.M.



LEGEND

SP ZONE

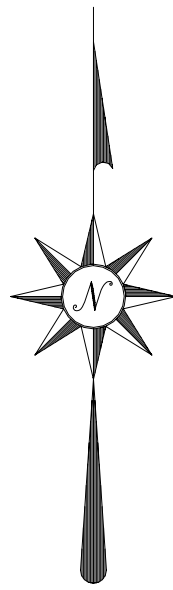
SPECIFIC PLAN (SP 335)

MAP NO. 38.120

CHANGE OF OFFICIAL ZONING PLAN  
PRADO – MIRA LOMA  
DISTRICT

CHANGE OF ZONE CASE NO. 06848  
AMENDING ORDINANCE NO. 348  
ADOPTED BY ORDINANCE NO. 348.4344  
DECEMBER, 20, 2005

RIVERSIDE COUNTY BOARD OF SUPERVISORS



SCALE IN FEET

