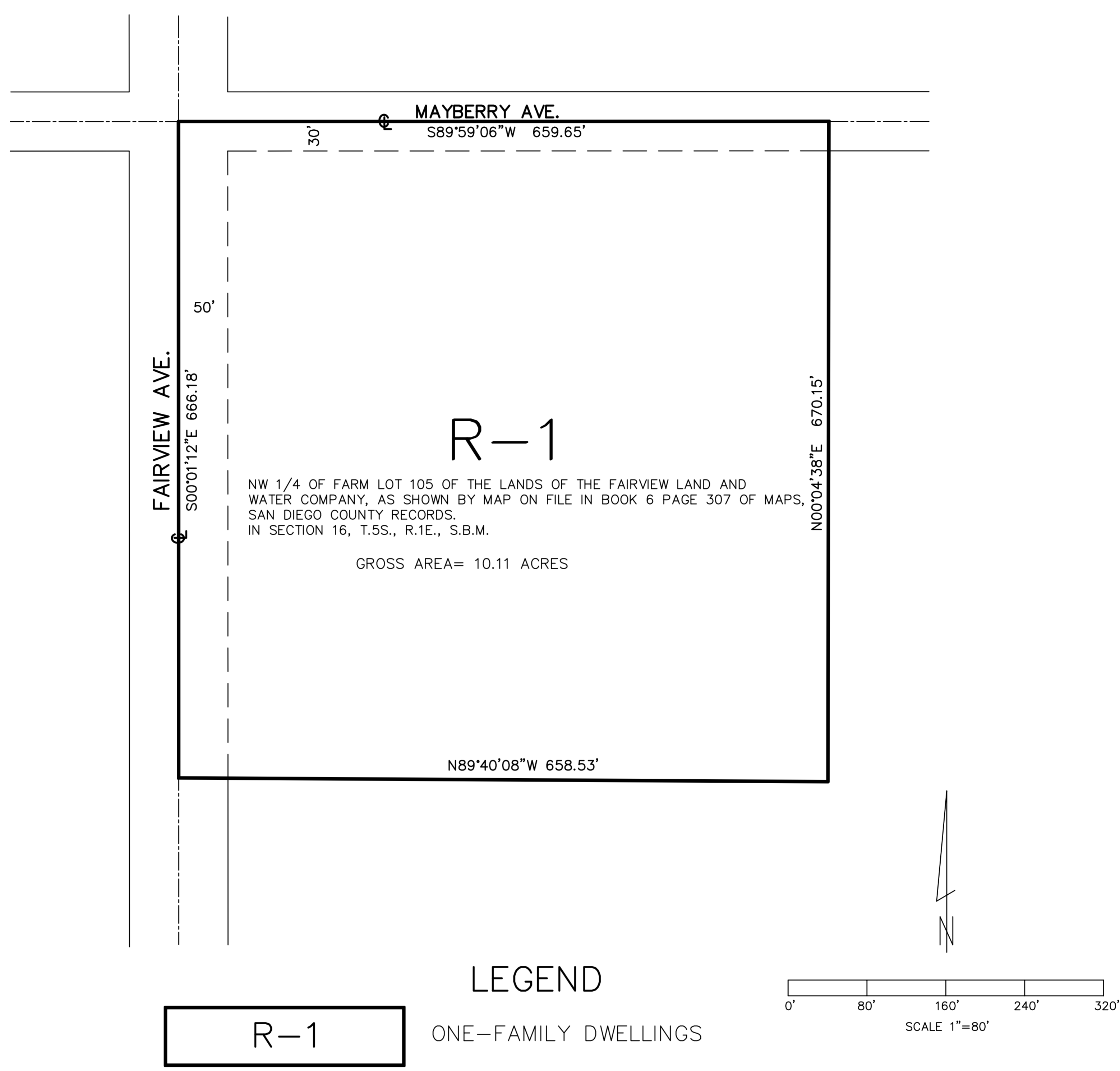


BAUTISTA AREA
SEC. 16, T. 5 S., R. 1 E., S.B.B. & M.



R-1

ONE-FAMILY DWELLINGS

MAP NO. 2.2182

CHANGE OF OFFICIAL ZONING PLAN

AMENDING

MAP NO. 2, ORDINANCE NO. 348

CHANGE OF ZONE CASE NO. 6742

ADOPTED BY ORDINANCE NO. 348.4424

OCT. 17, 2006

RIVERSIDE COUNTY BOARD OF SUPERVISORS