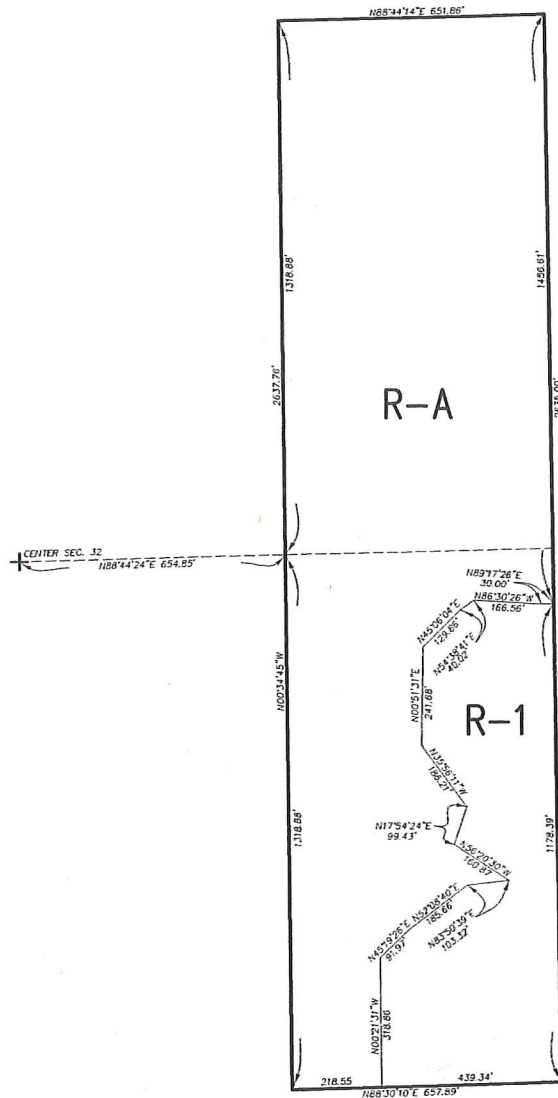
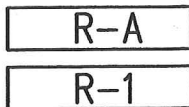


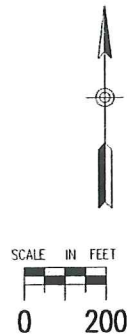
RANCHO CALIFORNIA AREA  
SEC. 32 , T. 6 S., R. 3 W. S.B.B. & M



LEGEND:



RESIDENTIAL AGRICULTURAL  
ONE-FAMILY DWELLINGS



MAP NO. 2.2006

CHANGE OF OFFICIAL ZONING PLAN  
AMENDING

MAP NO. 2 ORDINANCE NO. 348

CHANGE OF ZONE CASE NO. 6609  
AMENDING ORDINANCE NO. 348

ADOPTED BY ORDINANCE NO. 348.4050

APRIL 9, 2002

RIVERSIDE COUNTY BOARD OF SUPERVISORS