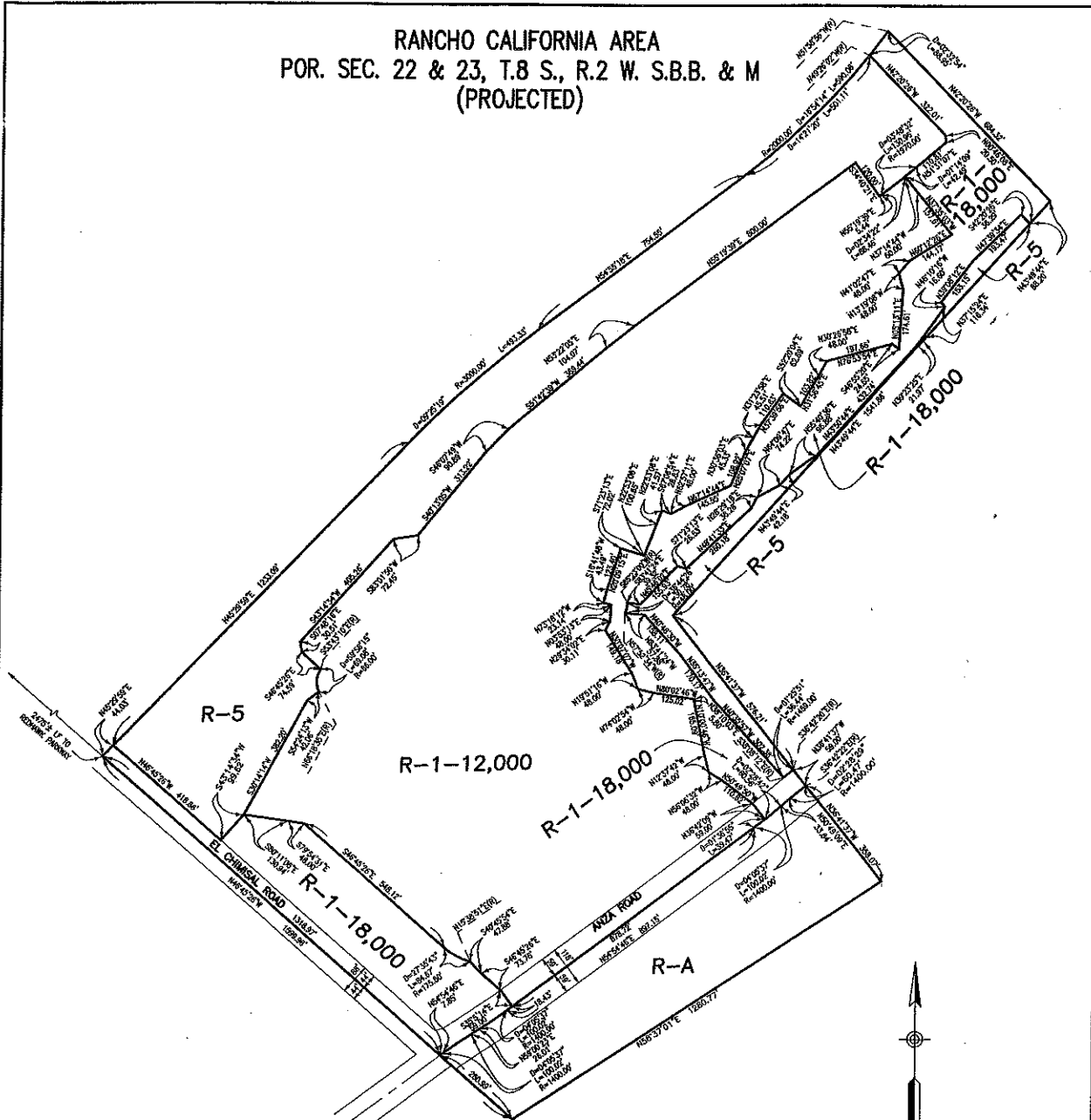


RANCHO CALIFORNIA AREA  
 POR. SEC. 22 & 23, T.8 S., R.2 W. S.B.B. & M  
 (PROJECTED)



LEGEND:

R-A
R-1-12,000
R-1-18,000
R-5

Residential Agricultural  
 One Family Dwelling, 12,000 S.F. Minimum  
 One Family Dwelling, 18,000 S.F. Minimum  
 Open Area Combining Zone - Residential Developments

SCALE IN FEET  
 0 200

MAP NO. 2.2035

CHANGE OF OFFICIAL ZONING PLAN

AMENDING

MAP NO. 2 ORDINANCE NO. 348

CHANGE OF ZONE CASE NO. 6517

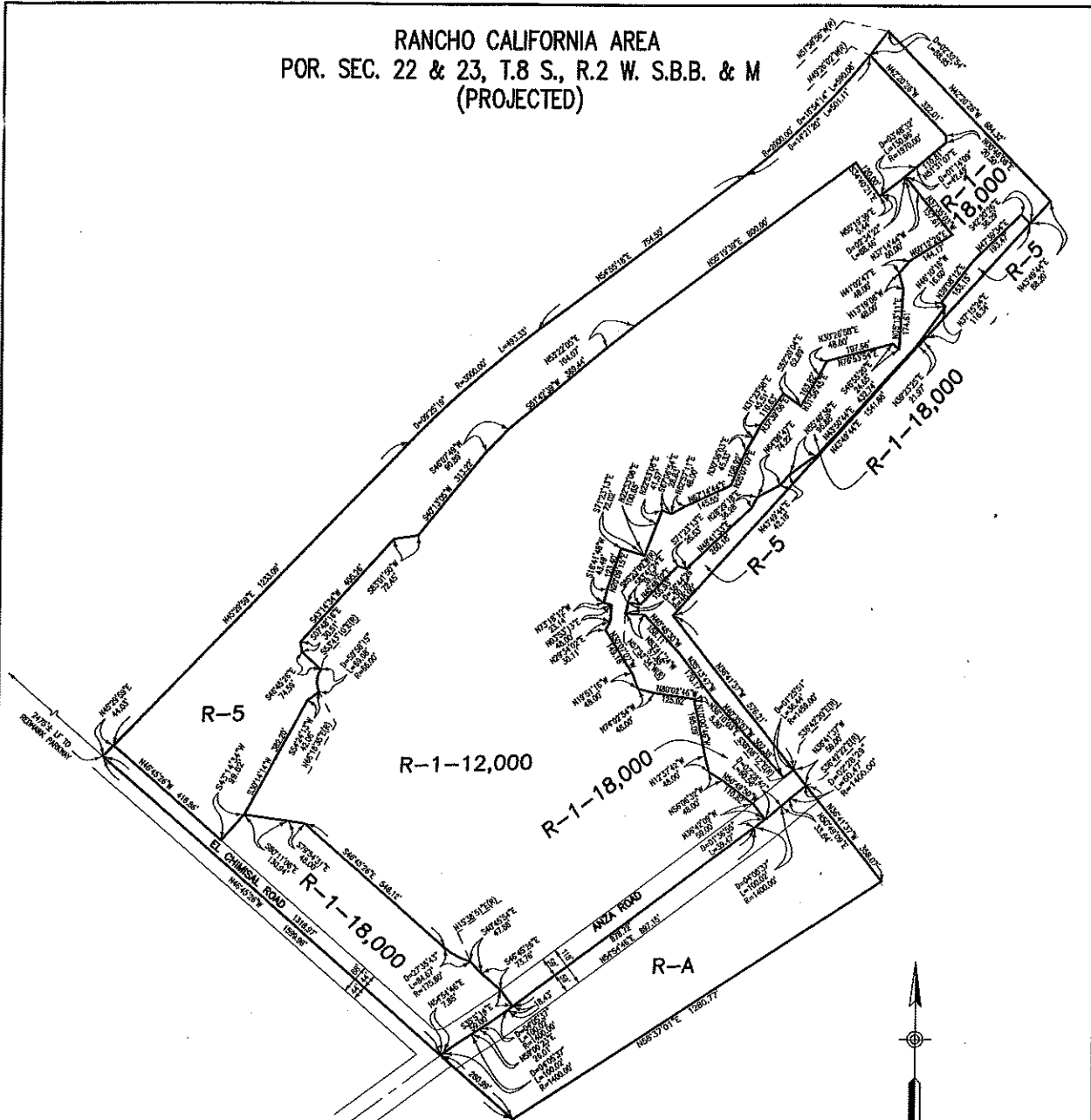
AMENDING ORDINANCE NO. 348

ADOPTED BY ORDINANCE NO. 348.4103

FEBRUARY 25, 2003

RIVERSIDE COUNTY BOARD OF SUPERVISORS

RANCHO CALIFORNIA AREA  
 POR. SEC. 22 & 23, T.8 S., R.2 W. S.B.B. & M  
 (PROJECTED)



LEGEND:

R-A
R-1-12,000
R-1-18,000
R-5

Residential Agricultural  
 One Family Dwelling, 12,000 S.F. Minimum  
 One Family Dwelling, 18,000 S.F. Minimum  
 Open Area Combining Zone - Residential Developments

SCALE IN FEET  
 0 200

MAP NO. 2.2035

CHANGE OF OFFICIAL ZONING PLAN

AMENDING

MAP NO. 2 ORDINANCE NO. 348

CHANGE OF ZONE CASE NO. 6517

AMENDING ORDINANCE NO. 348

ADOPTED BY ORDINANCE NO. 348.4103

FEBRUARY 25, 2003

RIVERSIDE COUNTY BOARD OF SUPERVISORS