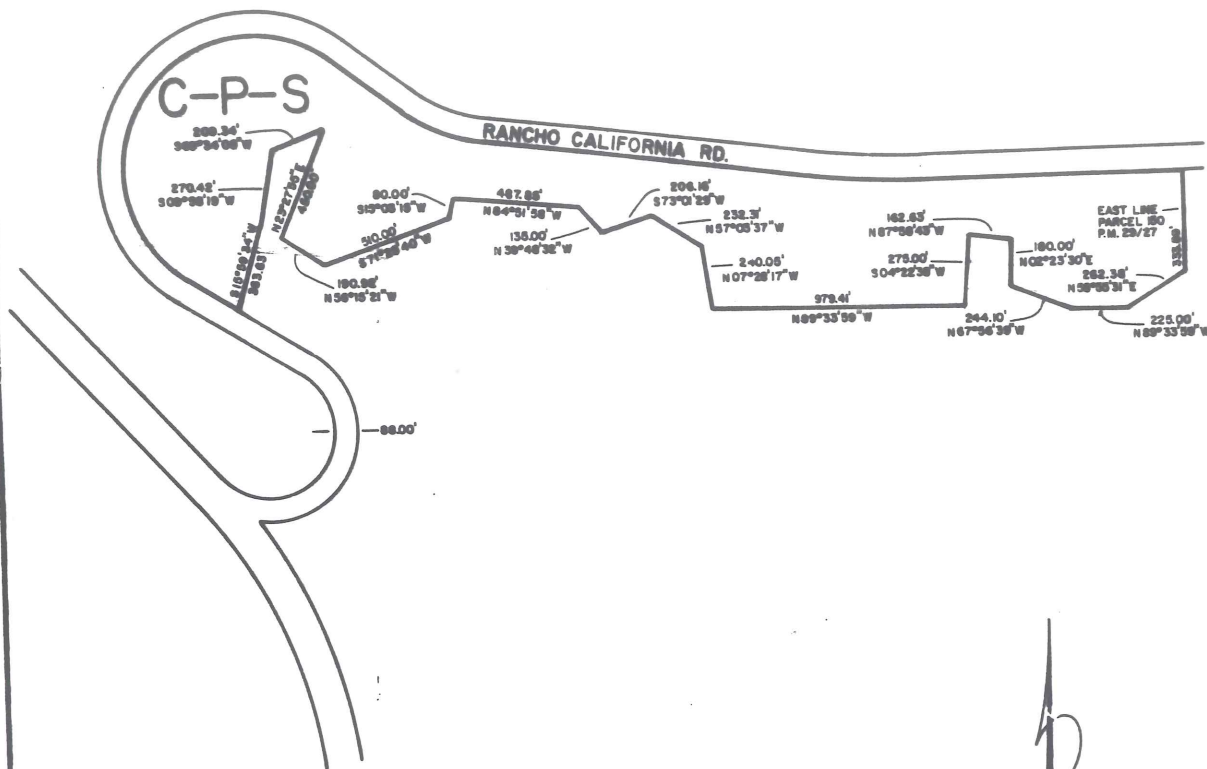


SANTA ROSA RANCHO AREA
SEC.10,11 T.8S.,R.3W., S.B.B. & M.



LEGEND

C-P-S SCENIC HIGHWAY COMMERCIAL



MAP NO. 2.1206
CHANGE OF OFFICIAL ZONING PLAN
AMENDING
MAP NO. 2 ORDINANCE NO. 348

CHANGE OF ZONE CASE NO. 4654
AMENDING ORDINANCE NO. 348
ADOPTED BY ORDINANCE NO. 348.2658
ON DECEMBER 16, 1986
RIVERSIDE COUNTY PLANNING COMMISSION

N 00° 23' 40" W 377.89'

4654