

RIVERSIDE COUNTY
Winchester Community Plan



Workshop #1 Overview

May 11, 2017

- Introduction to the Plan
- Plan Components
- Community Visioning
 - *Exploring Community Values*
 - *Group Exercise*
 - *Report Out*
- Next Steps

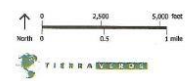
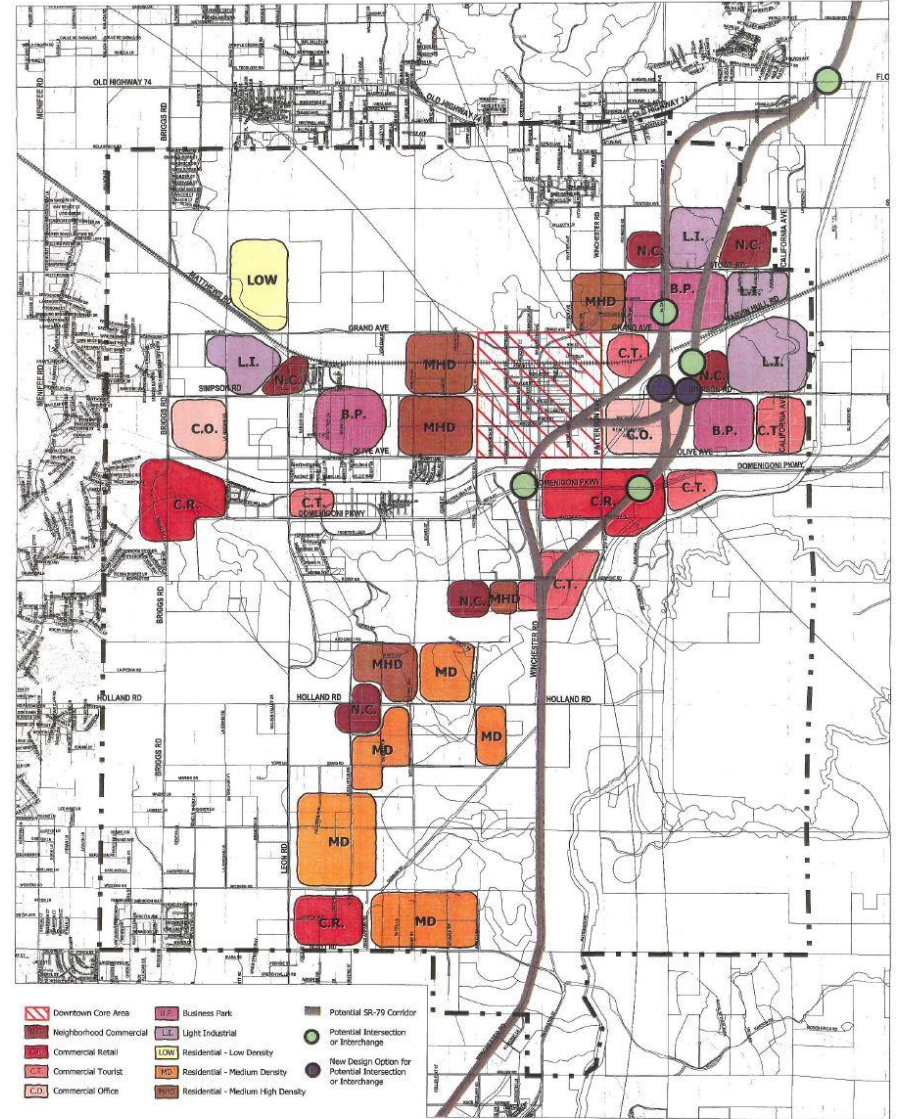
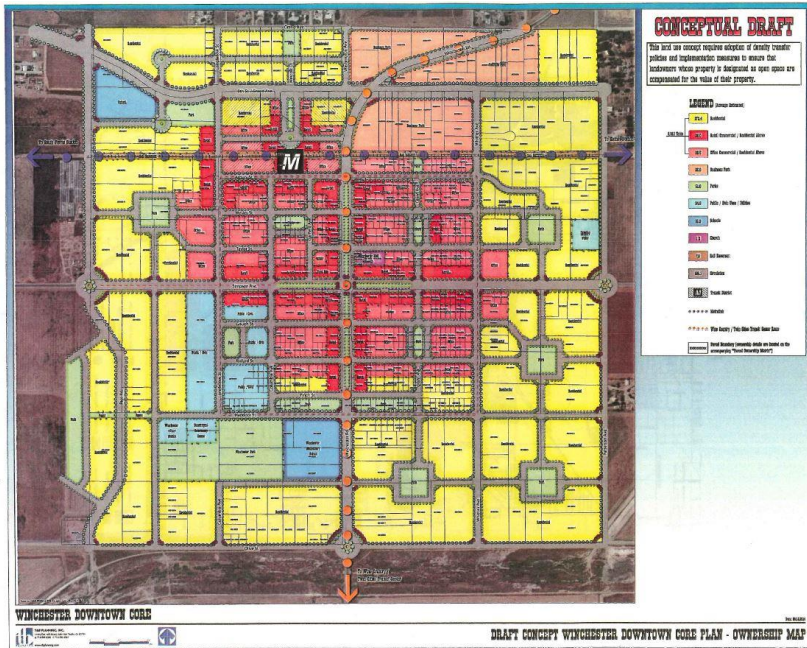


Introduction to the “Plan”

- Development of “Community Plan” for the Winchester Area
 - Build upon prior work efforts in Winchester
 - Establishes official land use policy for Winchester Area
 - Establishes official Policy/Regulatory and Design Guidance
 - Evaluates Environmental Impacts (CEQA)
 - Circulation Analysis/Modeling



RIVERSIDE COUNTY Winchester Community Plan

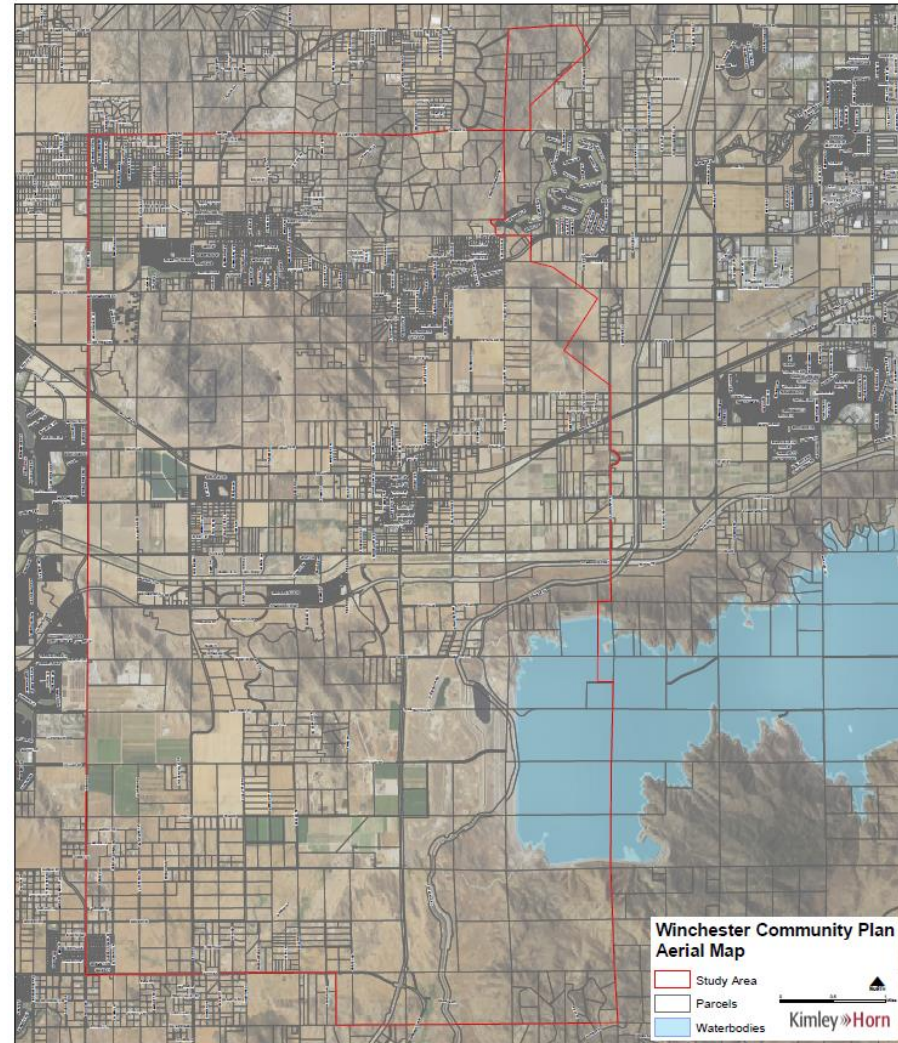


Winchester Municipal Advisory Council (WMAC)
Proposed Land Use Modifications Map



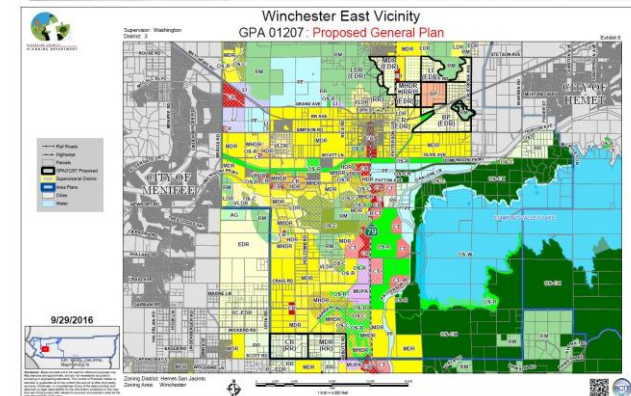
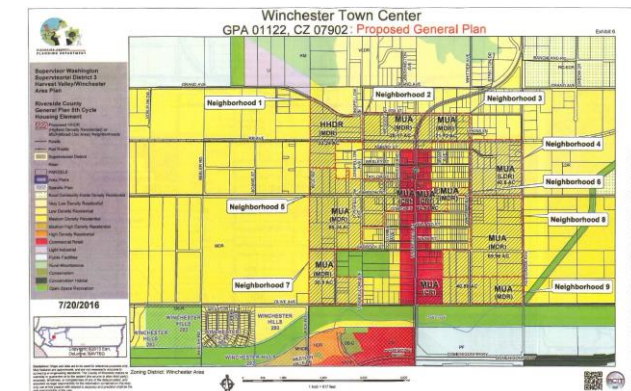
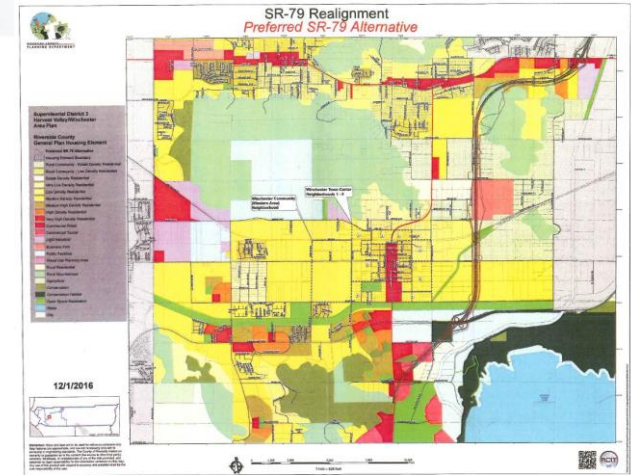
Project Area

- Project Boundaries not yet fully defined
- Working Boundaries:
 - **North** – Double Butte/Stetson Avenue Vicinity
 - **East** – California Avenue
 - **West** – Briggs Road
 - **South** – Scott Road



Existing Policy Context

- County General Plan
- Housing Element Adoption
- Future Transportation Enhancements
- Existing Entitlements
- Prior Planning Efforts



Community Engagement Program

- Community Outreach Meetings
 - Meeting #1: Introduction, History, Visioning
 - Meeting #2: Exploration of Alternative Ideas
 - Meeting #3: Preferred Alternative
- Stakeholders
 - Local Residents and Land Owners
 - Eastern Municipal Water District
 - Tribal Entities
 - County Service Providers
 - Other Agencies/Special Districts





Community Identification Exercise



Winchester's "Treasures"

- Identify your top **THREE TREASURES**
 - *What things do you value most in the Winchester area?*
 - *What are your favorite things?*
- Write **one** thought per Post-It note
- *Place the Post-It notes on the wall, clustering yours with similar ideas*



Winchester's "Challenges"

- Identify top **THREE CHALLENGES** facing Winchester
 - What are the biggest challenges in the Winchester area?
 - What problems does the area face?
- Write **one** thought per Post-It note
- Place the Post-It notes on the wall, clustering yours with similar ideas



Your Vision for Winchester...

- Identify your top **THREE VISIONS** for the future of the Winchester area
 - What ideas do you have for the future of the Winchester area?
 - What would make the area better?
- Write **one** thought per Post-It note
- Place the Post-It notes on the wall, clustering yours with similar ideas





Community Identification Summary





Small Group Exercise: Vision Statement



Small Group Exercise

- Developing a Draft Vision Statement for the Winchester Area
- A Vision Statement:
 - *Is a vivid description of the future*
 - *Describes a community's dreams, hopes, and aspirations*
 - *Expresses ideas clearly and concisely*
 - *Is a tool that helps guide short-term and long-term courses of action*



Small Group Exercise

- Each group will create a vision statement, building on the Post-It note exercise
- Look at the Post-It notes and consider:
 - **Treasures**- How will Winchester's treasures be reflected in its future?
 - **Challenges**- What will Winchester be like when it has overcome its challenges?
 - **Visions**- What new opportunities do you see for Winchester in the future?



Small Group Exercise

- Groups will work 15-20 minutes, then share results with everyone
- Group member roles:
 - **Discussion leader** - Facilitates discussion
 - **Presenter** - Presents vision statement
 - **Recorder** - Writes down notes and vision statement
 - **Timekeeper** - Keeps group aware of time





Small Group Exercise: Group Presentations



Next Steps

- Complete Baseline Conditions and Analysis
- Field Reconnaissance/Mapping
- Community Workshop – Design Alternatives
- Any questions, contact:

Jerry Jolliffe, Project Manager

Riverside County Planning Department

4080 Lemon Street, 12th Floor

Riverside, CA 92501

(951) 955-3024

JJolliff@RIVCO.org

<http://planning.rctlma.org/>

(Community Plan webpage coming soon to the Planning website)

Project Schedule

