

PLANNING UNIT 11a

Approved Planning Unit 11a

Land UseR-4 Patio Homes
Acreage.16.0 Acres
Density.3.9 Units per Acre
No. of Units . . .63 Units

Proposed Planning Area 6

Land UseR-4 Patio Homes
Acreage.14.2 Acres
Density.4.4 Units per Acre
No. of Units . . .63 Units

Summary:

Planning Area 7 incorporates a one acre park not included in Planning Unit 11a. Although the number of dwelling units remains the same, the land coverage density has increased from 3.9 units per acre to 4.4, but is still well within the original medium density classification. A reduction in acreage from 16.0 acres to 14.2 acres with excess acreage being absorbed into natural open space.

Planning Area 7 has been approved by the County as Vesting Tentative Tract #22664.

Additional design and landscape standards are contained in the Appendix.

PLANNING AREA 7	
LAND USE	R4
AGRES	14.2
DENSITY (d.u./ac)	4.4
NO. OF UNITS	63

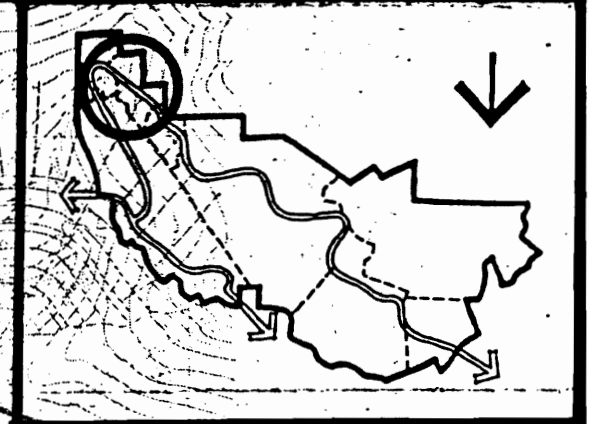
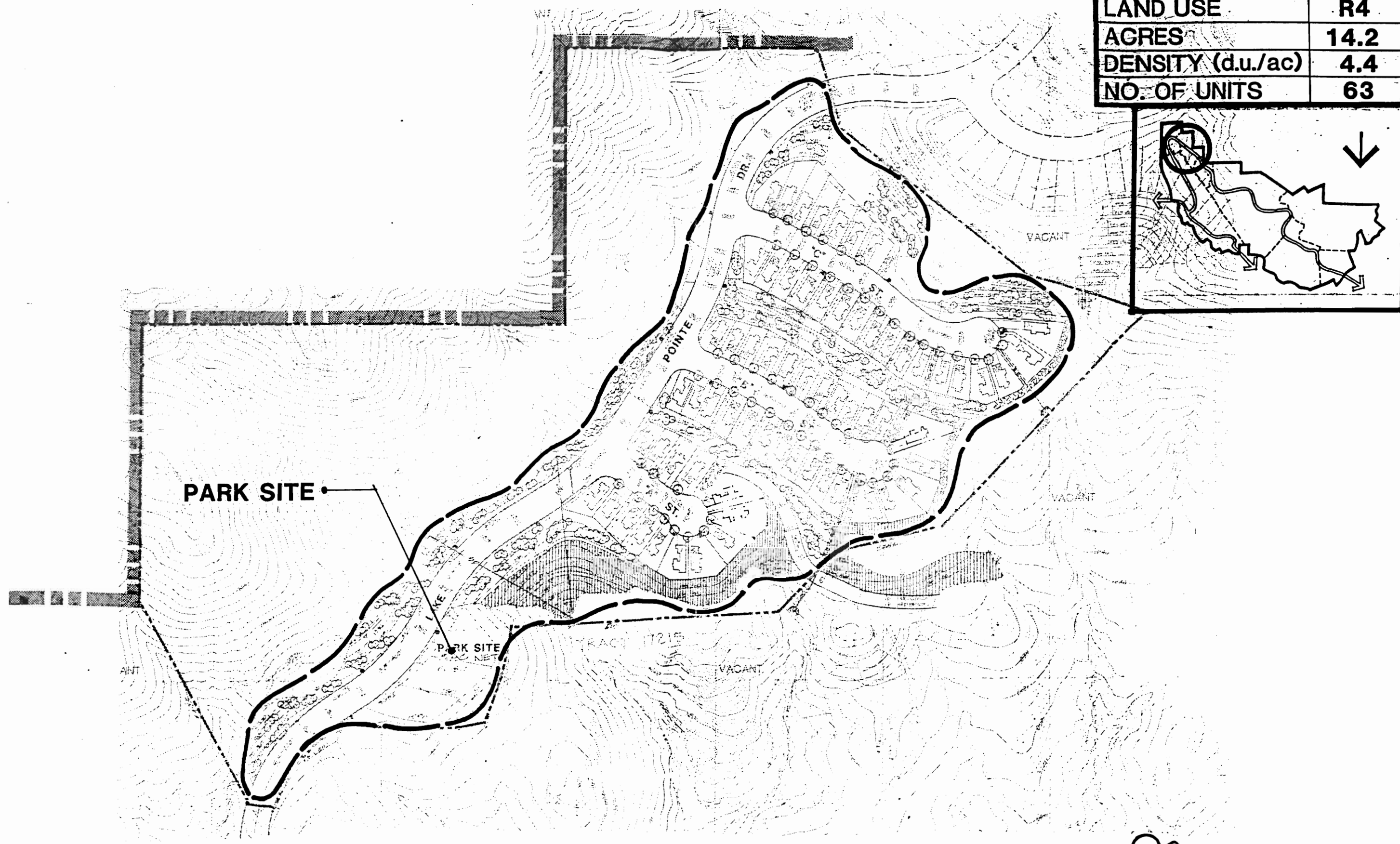


FIGURE 9