


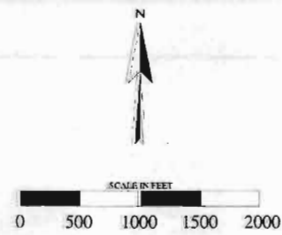
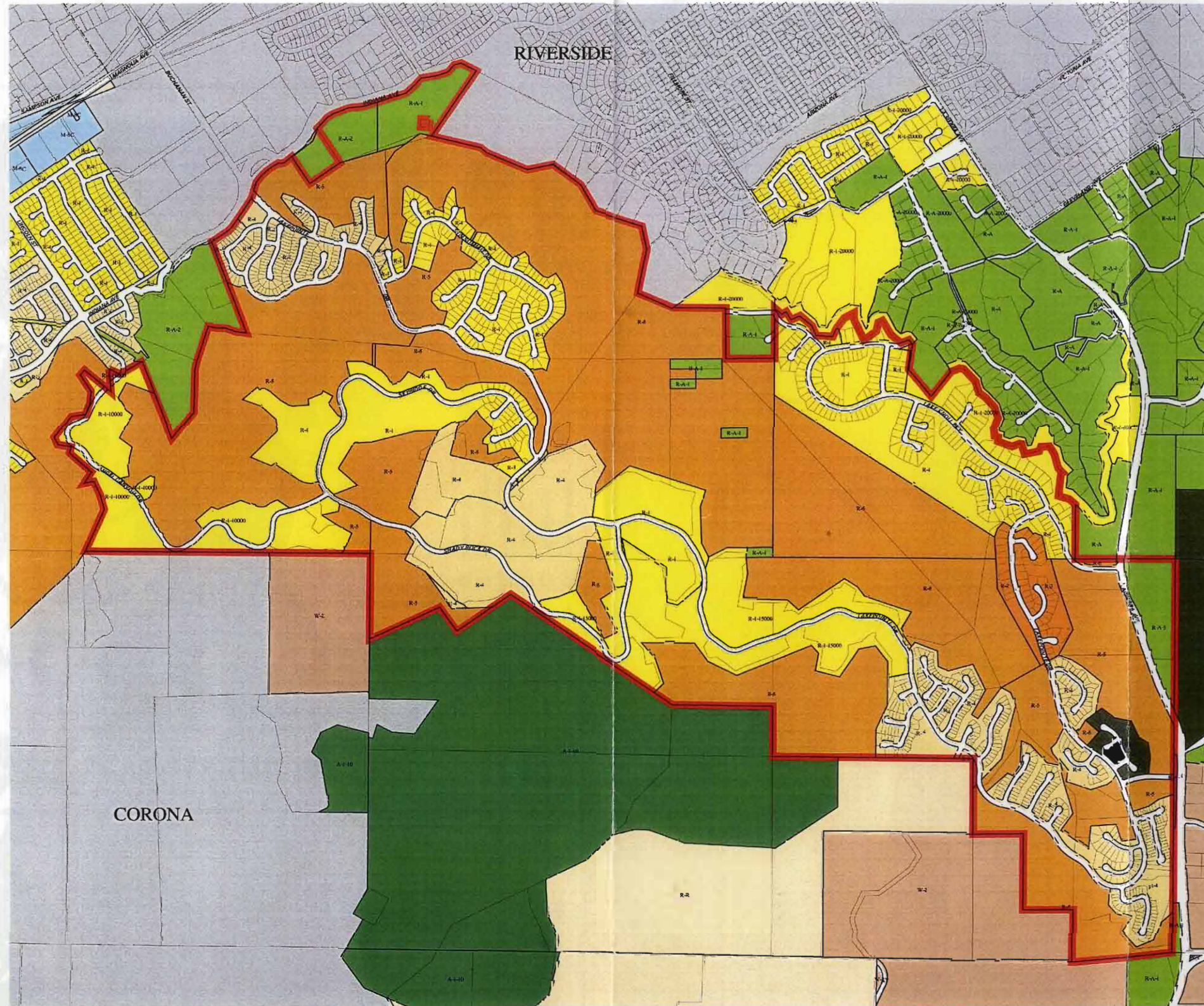


Land Use	Planning Area	Gross Acreage
RESIDENTIAL		
LOW 0.5-2.0 d.u./ac	L 9	120.6
	10	161.3
Sub-total		281.9
MEDIUM-LOW 2.0-4.0 d.u./ac	ML 1	64.4
	2	15.2
	5	10.6
	6	10.0
	12	69.7
Sub-total		169.9
MEDIUM 3.0-5.0 d.u./ac	M 4	9.2
	7	12.6
	8	29.3
	11	42.0
Sub-total		93.1
MEDIUM-HIGH 5.0-10.0 d.u./ac	MH 3	12.9
Sub-total		12.9
Residential sub-total		555.9
COMMERCIAL		
NEIGHBORHOOD		8.9
Sub-total		8.9
PUBLIC USE		
PARK		43.2
CHURCH		1.3
Sub-total		44.5
MAJOR ROADS		
ROADS		61.2
OPEN SPACE		
NATURAL		977.6
PROJECT TOTAL		1650.0

Acreages shown do not include collector streets, parks or commercial lot

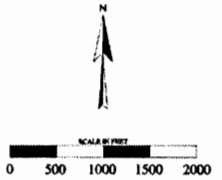
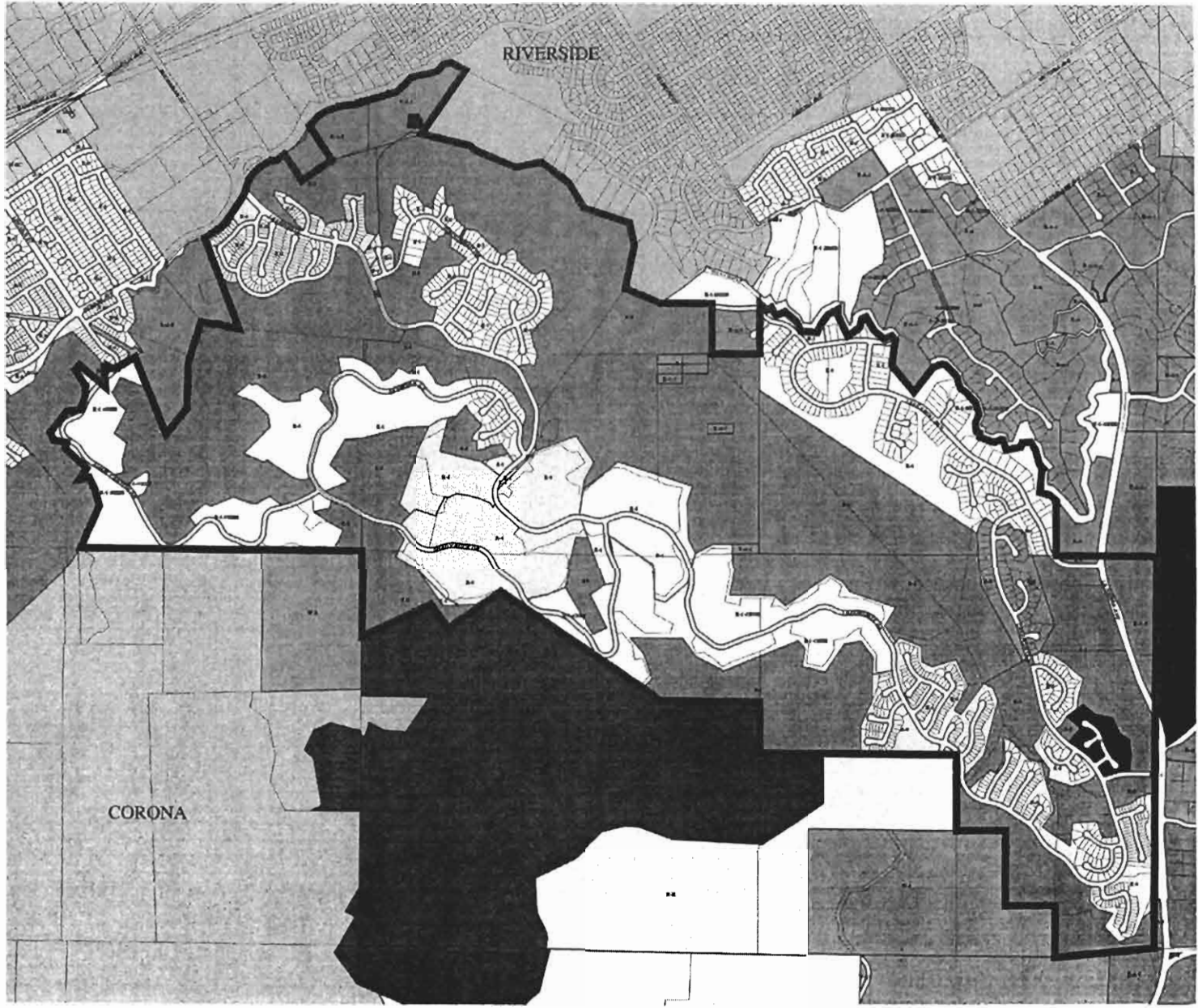
SP 144



- | | | | |
|------------------|-------------|------------------|-----------------|
| AGRICULTURAL | RESIDENTIAL | SPECIFIC PLAN | ZONING BOUNDARY |
| COMMERCIAL | RESIDENTIAL | RURAL/OPEN SPACE | PARCEL BOUNDARY |
| INDUSTRIAL | RESIDENTIAL | RURAL/OPEN SPACE | |
| MINING | RESIDENTIAL | CITIES | |
| RURAL/OPEN SPACE | RESIDENTIAL | CITY BOUNDARY | |
| RESIDENTIAL | RESIDENTIAL | SP 144 BOUNDARY | |



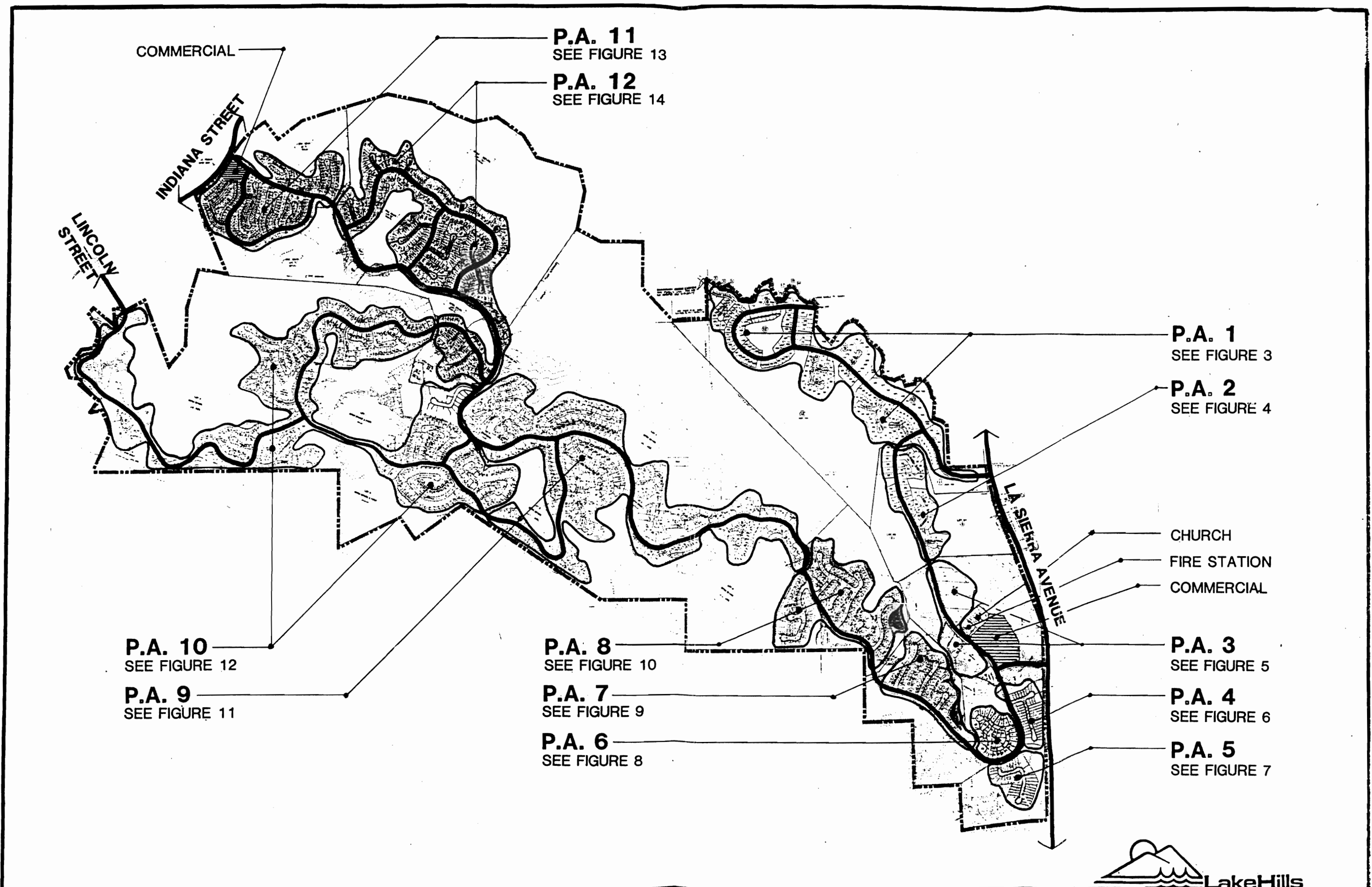
This map was made by the Riverside County Geographic Information System. The map contents were provided by the Assessor and the Department of Land Management. The County of Riverside and the Assessor and the Department of Land Management do not warrant the accuracy or completeness of the information contained on this map. The user assumes all responsibility for the use of the information on this map. The user acknowledges that the information on this map is subject to change without notice. The County of Riverside and the Assessor and the Department of Land Management are not responsible for any errors or omissions on this map. The user acknowledges that the information on this map is subject to change without notice.



- | | | | |
|------------------|-------------|------------------|-----------------|
| AGRICULTURAL | RESIDENTIAL | SPECIFIC PLAN | ZONING BOUNDARY |
| COMMERCIAL | RESIDENTIAL | RURAL/OPEN SPACE | PARCEL BOUNDARY |
| INDUSTRIAL | RESIDENTIAL | RURAL/OPEN SPACE | |
| MINING | RESIDENTIAL | CITIES | |
| RURAL/OPEN SPACE | RESIDENTIAL | CITY BOUNDARY | |
| RESIDENTIAL | RESIDENTIAL | SP 144 BOUNDARY | |



This map was made by the Riverside County Geographic Information System (GIS) and is intended for informational purposes only. It is not intended to be used for legal or financial purposes. The County of Riverside is not responsible for any errors or omissions in this map. For more information, contact the GIS Department at (951) 253-3000.



COMMERCIAL

P.A. 11
SEE FIGURE 13

P.A. 12
SEE FIGURE 14

INDIANA STREET

LINCOLN STREET

P.A. 1
SEE FIGURE 3

P.A. 2
SEE FIGURE 4

CHURCH
FIRE STATION
COMMERCIAL

LA SIERRA AVENUE

P.A. 3
SEE FIGURE 5

P.A. 4
SEE FIGURE 6

P.A. 5
SEE FIGURE 7

P.A. 10
SEE FIGURE 12

P.A. 9
SEE FIGURE 11

P.A. 8
SEE FIGURE 10

P.A. 7
SEE FIGURE 9

P.A. 6
SEE FIGURE 8



FIGURE 2 REV 7/27/88