

**LEGEND**

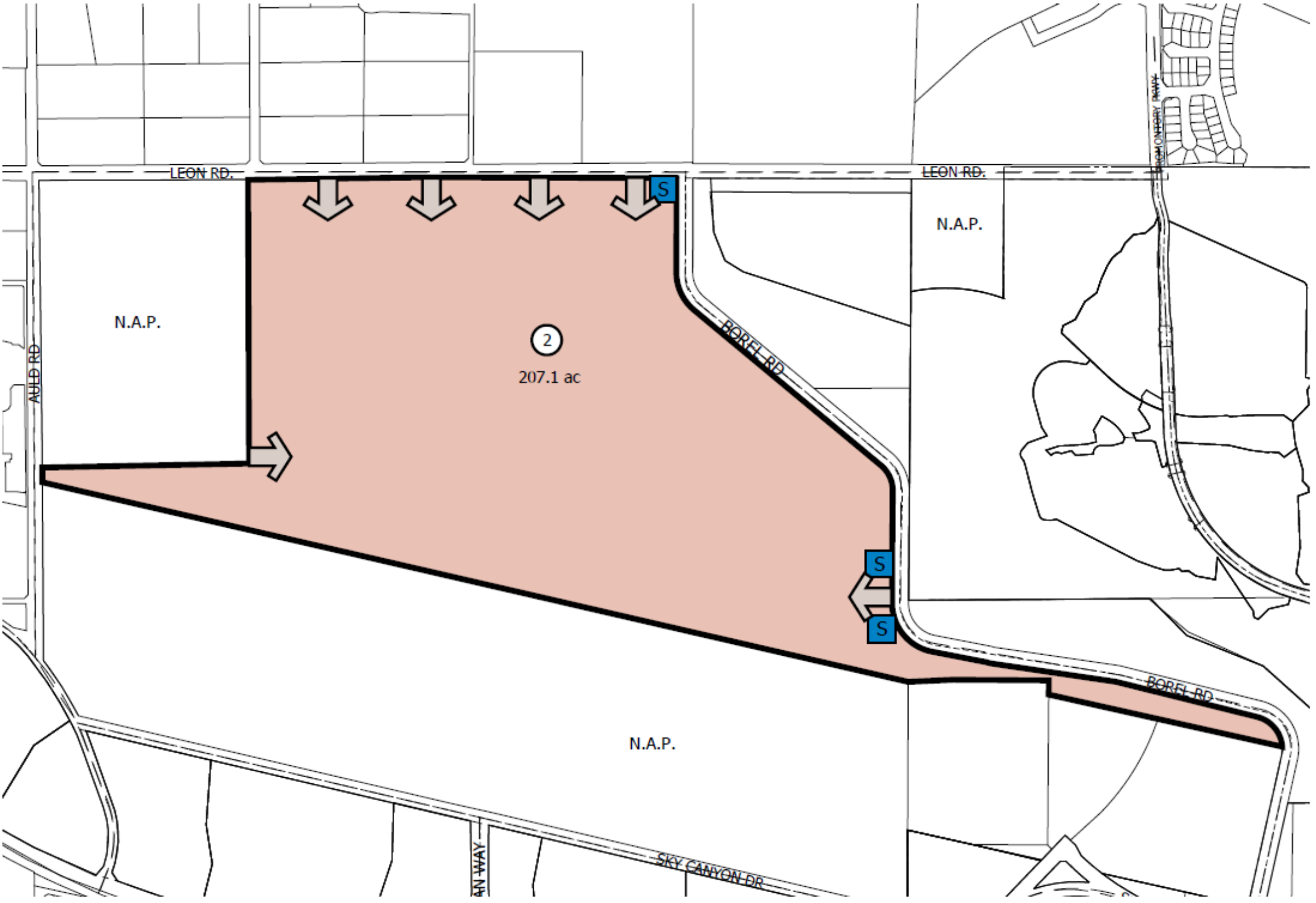
← Vehicular Entry

**KEY MAP**

Scale 1"=30' N

0 100 300 600

Section III - Planning Area Development Standards



**LEGEND**

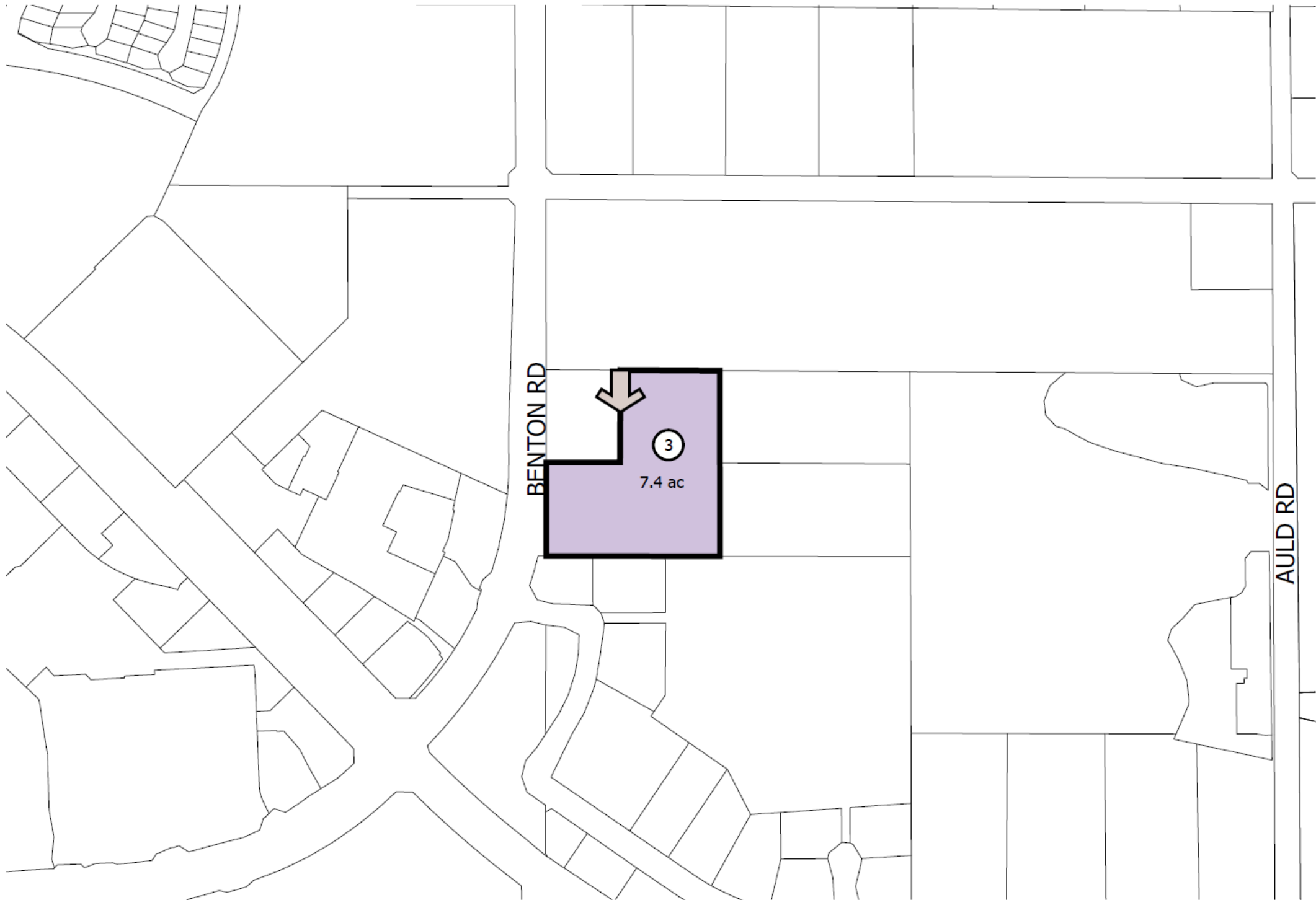
- Secondary Project Entry  
See Figures IV-47 through IV-50
- Vehicular Entry

**KEY MAP**

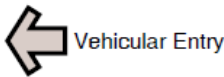
Scale 1"=50' N 0 100 300 600 1000



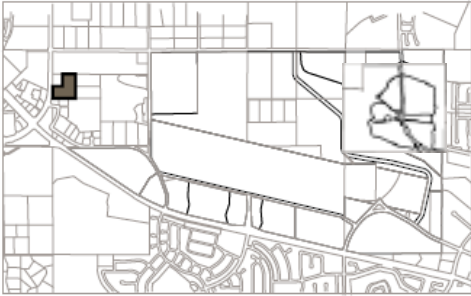
PLANNING AREA 2: BUSINESS PARK - FIGURE III-2



**LEGEND**





**KEY MAP**



Scale 1":30' N 0 100 300 600

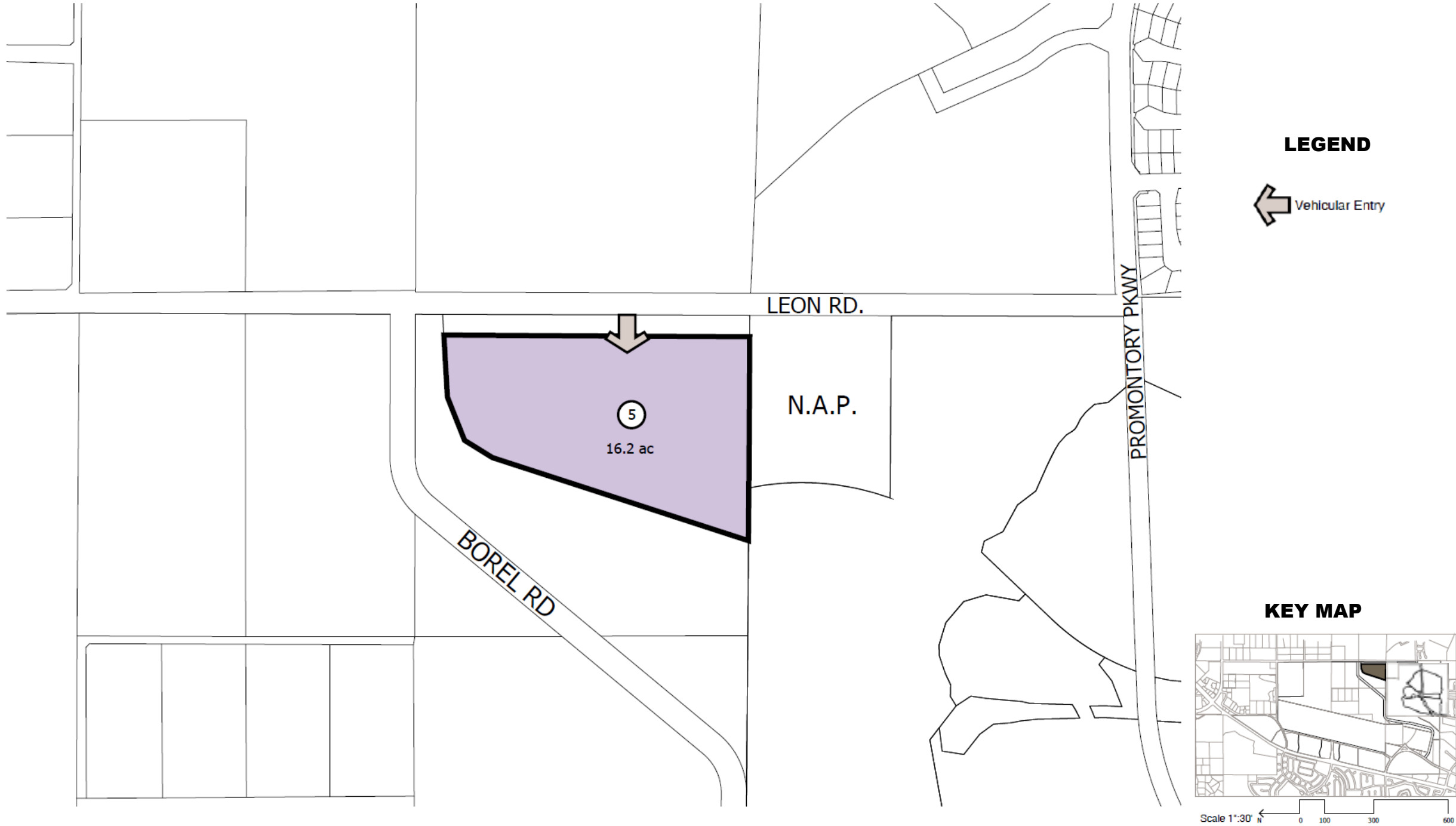


**LEGEND**

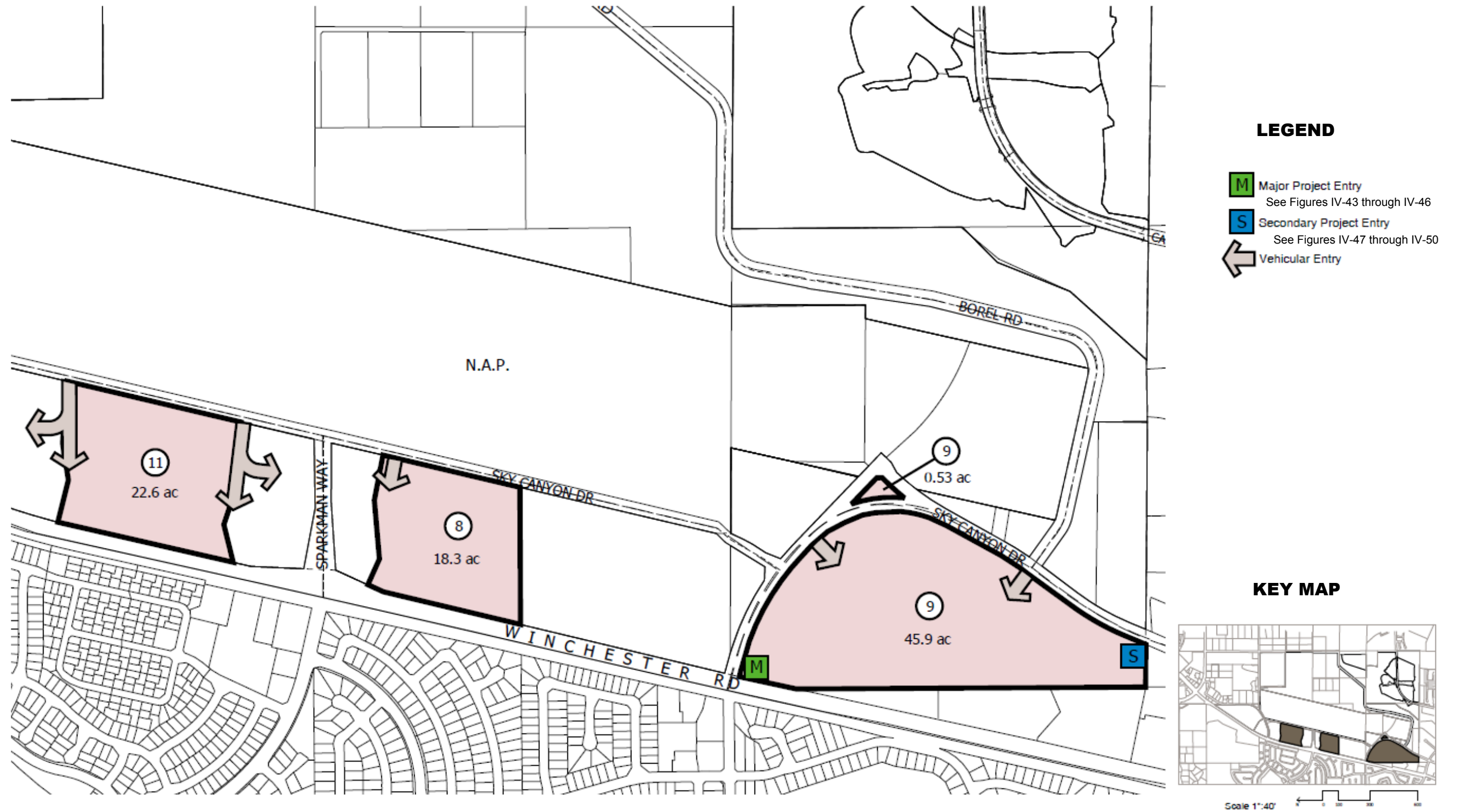
-  Secondary Project Entry  
See Figures IV-47 through IV-50
-  Vehicular Entry

**KEY MAP**

A key map in the bottom right corner shows a larger site plan with a shaded rectangle indicating the location of the three planning areas shown in the main map. Below the key map is a scale bar labeled "Scale 1":30' N" with markings at 0, 100, 300, and 600 feet.









**LEGEND**

- M** Major Project Entry  
See Figures IV-43 through IV-46
- S** Secondary Project Entry  
See Figures IV-47 through IV-50
- ←** Vehicular Entry

**KEY MAP**

Scale 1"=40'

0 100 300 600



PLANNING AREAS 14 & 17: MEDIUM DENSITY RESIDENTIAL, 2-5 DU/AC AND PLANNING AREAS 15 & 16: MEDIUM HIGH DENSITY RESIDENTIAL 5-8 DU/AC - FIGURE III-8







