

PLANNING UNITS 3 & 5

Approved Planning Unit 3

Land Use . . . . .R2 & R3 Residential  
Acreage . . . . .9.3 Acres  
Density . . . . .12.3 Units per Acre  
No. of Units. . .114 Units

Approved Planning Unit 5

Land Use . . . . .R2 & R3 Residential  
Acreage . . . . .5.9 Acres  
Density . . . . .7.1 Units per Acre  
No. of Units. . .42 Units

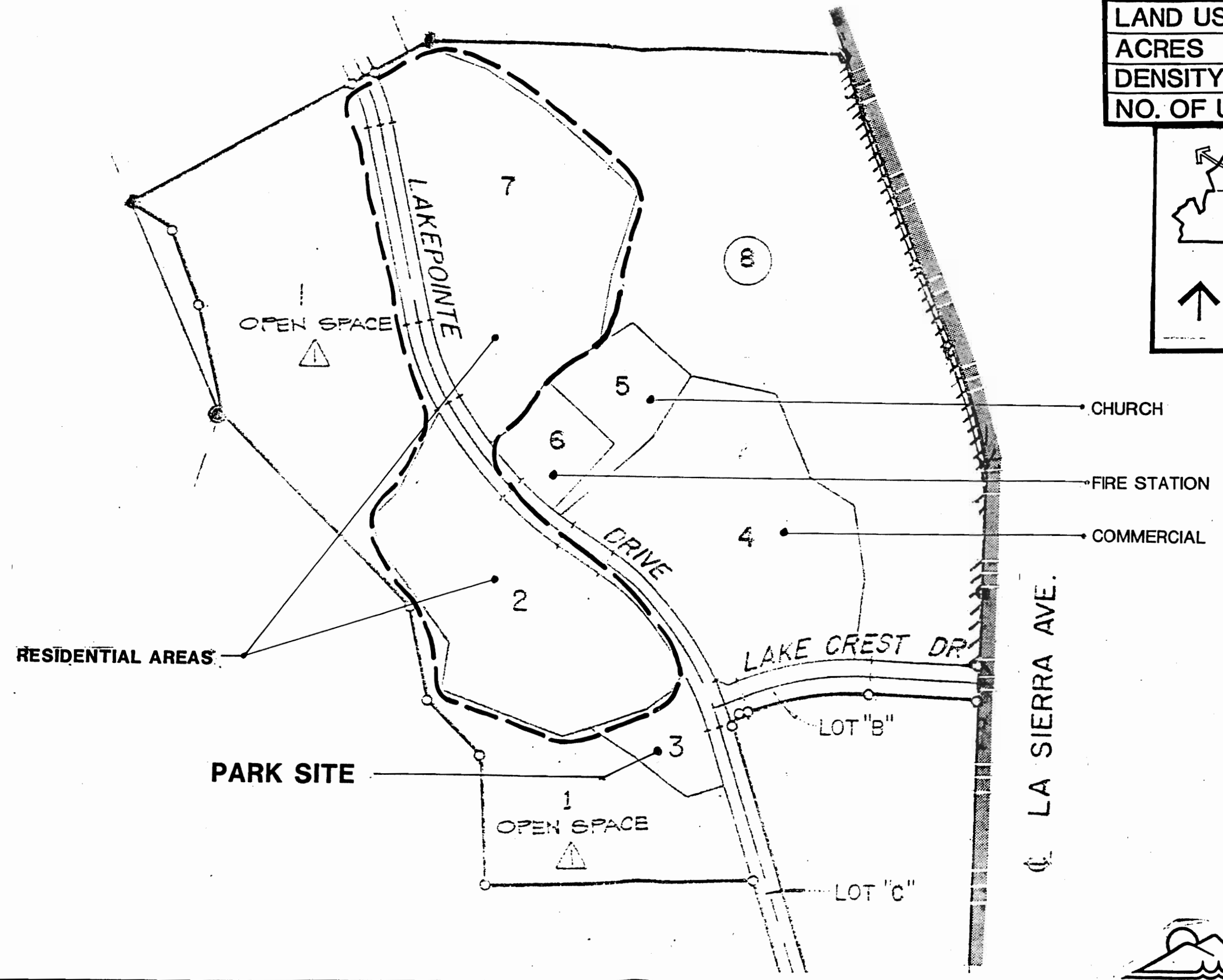
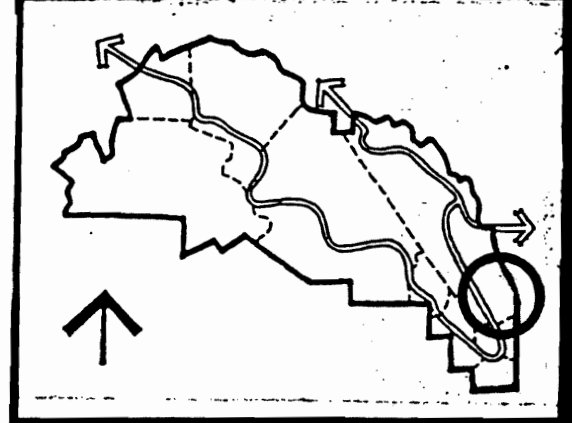
Proposed Planning Area 3

Land Use . . . . .R2 & R3 Residential  
Acreage . . . . .17.0 Acres  
Density . . . . .7.3 Units per Acre  
No. of Units. . .124 Units

Summary:

Planning Area 3 incorporates the County approved Final Tract #17215-1 which has been recorded. The new Planning Area includes two residential sites as did the original Planning Areas 3 and 5 combined. In addition to these, Planning Area 3 incorporates a 1.2 acre park site not included in the prior land use plan. An increase in the acreage from 15.2 acres to 17.0 acres. A reduction of 32 dwelling units within the Planning Area while maintaining the same land use. Of the excess units, 20 are transferred into Planning Area 8.

<b>PLANNING AREA 3</b>	
LAND USE	<b>R4</b>
ACRES	<b>17</b>
DENSITY (d.u./ac)	<b>7.3</b>
NO. OF UNITS	<b>124</b>



- CHURCH
- FIRE STATION
- COMMERCIAL



FIGURE 5 REV 7/27/88