

PLANNING UNIT 2

Approved Planning Unit 2

Land Use . . . . . R-1 Single Family  
Acreage . . . . . 18.4 Acres  
Density . . . . . 3.8 Units per Acre  
No. of Units . . . . 71 Units

Proposed Planning Area 2

Land Use . . . . . R-1 Single Family  
Acreage . . . . . 17 Acres  
Density . . . . . 3.0 Units per Acre  
No. of Units . . . . 52 Units

Summary:

Planning Area 2 includes Tract #17816 which, like Planning Area 1, has already been recorded. The acreage has been decreased by .8 acre, which has been incorporated into the natural open space adjacent to it. There has also been a significant reduction in density from 71 units to 52 recorded units. Of the 19 units reduced, 17 are transferred to Planning Area 4 and 2 to Planning Area 5.

PLANNING AREA 2	
LAND USE	R1
ACRES	17
DENSITY (d.u./ac)	3.0
NO. OF UNITS	52

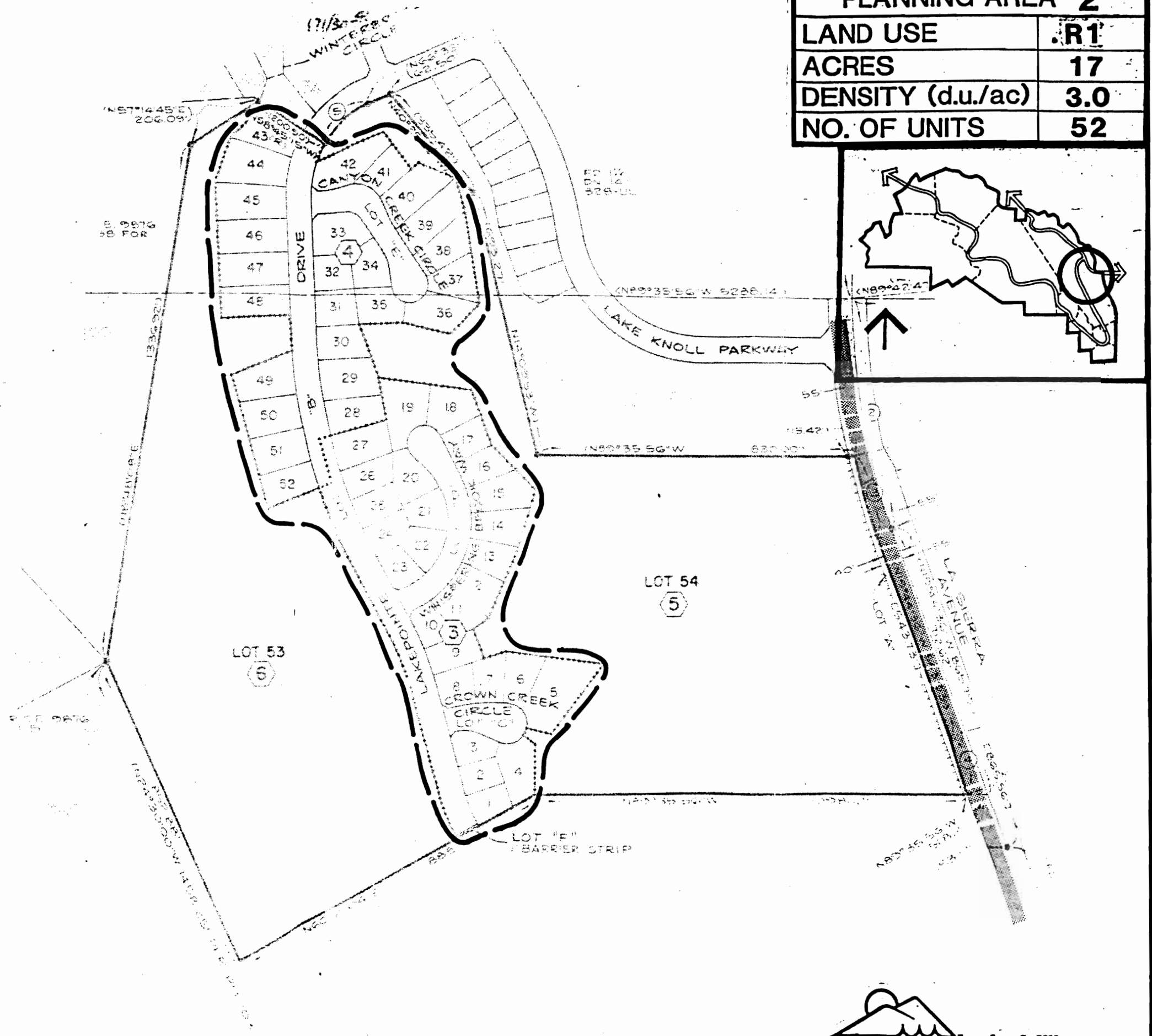


FIGURE 4